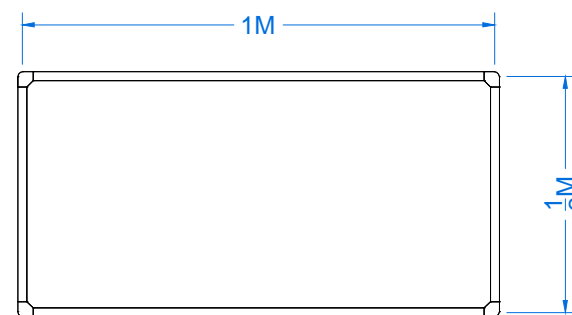
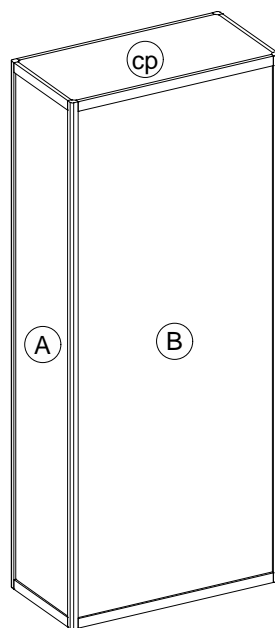
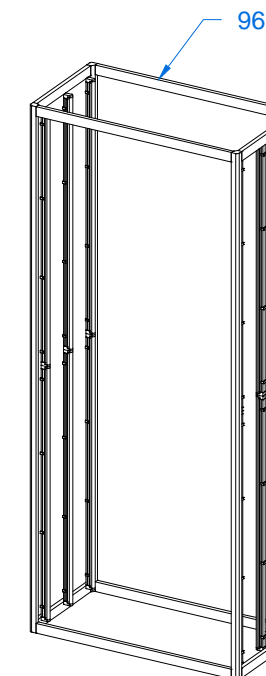


APPROVED FOR VETTING BYPASS
By Brian Fohl on Dec 05, 2018

FRONT ISOMETRIC



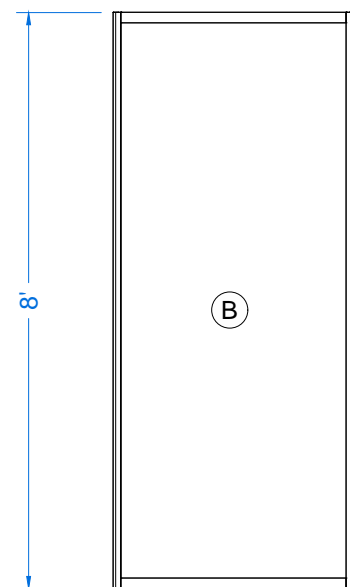
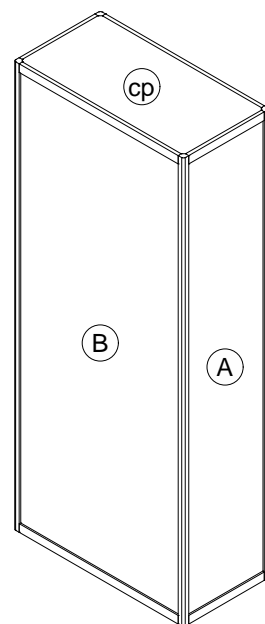
PLAN VIEW



STRUCTURE VIEW

T5 LIGHTING SHOWN HERE, ACTUAL LIGHTING TYPE,
QUANTITY AND INSTALL SUBJECT TO CHANGE.

REAR ISOMETRIC



FRONT ELEVATION

Double Sided Light Box Kiosk - Parts List

I.D.	Qty	Type	Size	Area (SqFt)	Part Number	Description	Material	Color	Notes
	4	P31	96"			8'-0"	Aluminum	Silver	
	4	H45	17-7/8"			1/2M	Aluminum	Silver	
	4	H45	37-9/16"			1M	Aluminum	Silver	
A	2	Wall Panel	18-3/8" x 93"	11.9		1/2M x 8'-0" (H45/H45)	PVC 3MM	White	
B	2	Acrylic Panel	38-1/8" x 93"	24.6		1M x 8'-0" (H45/H45)	Plexi	Milk	
cp	1	Ceiling Panel	1M x 1/2M	5.08		Inset Rectangle	Foamcore	White	
	12	Lighting	46.5"			T5 Fluorescent-46-1/2"	Standard	Standard	
	2	MiscPart	1/2M			1/2M NJ	--	--	
	2	MiscPart	1M			1M NJ	--	--	

LESS THAN 30 DAYS OUT



MORE THAN 30 DAYS OUT

