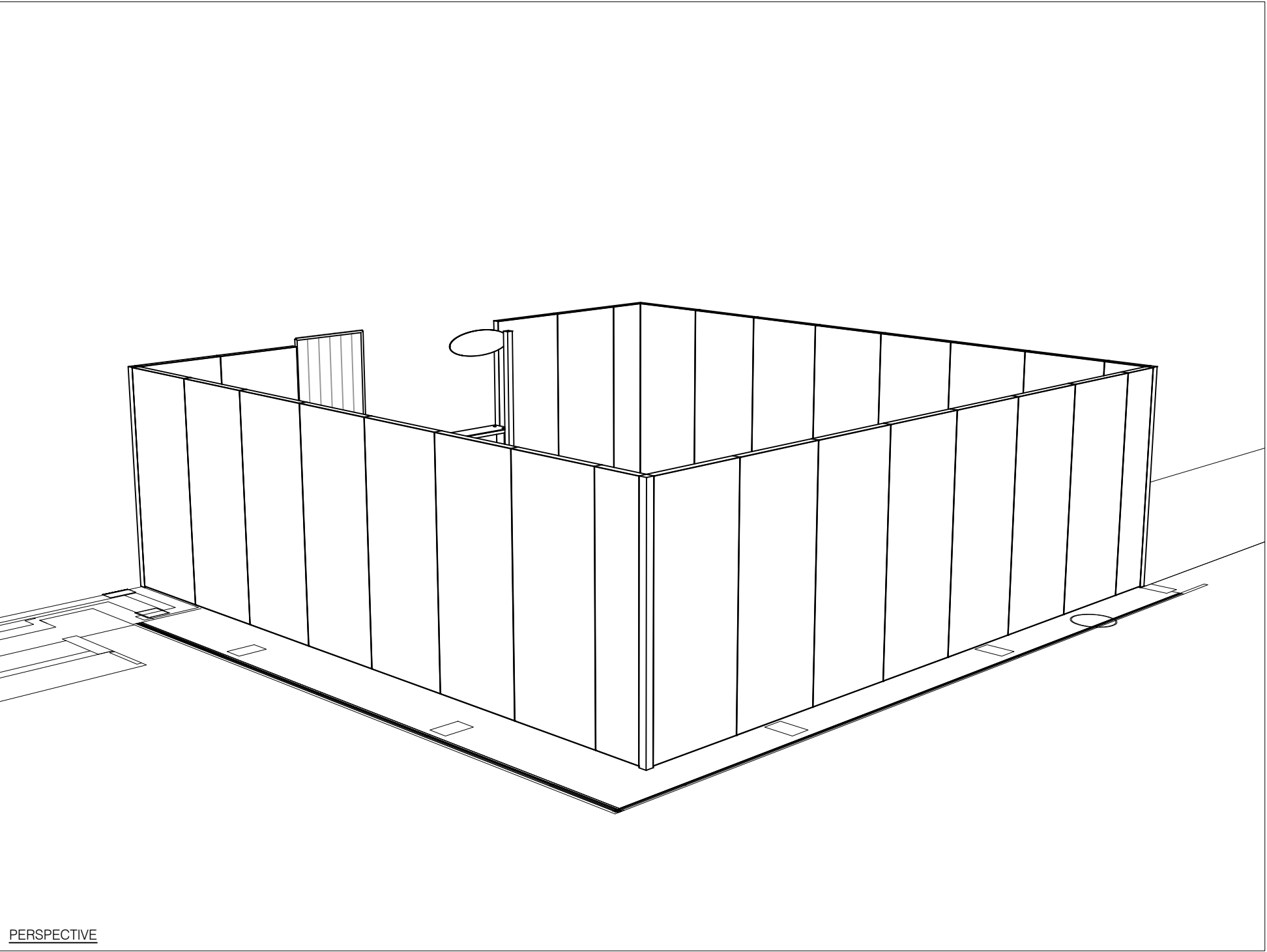
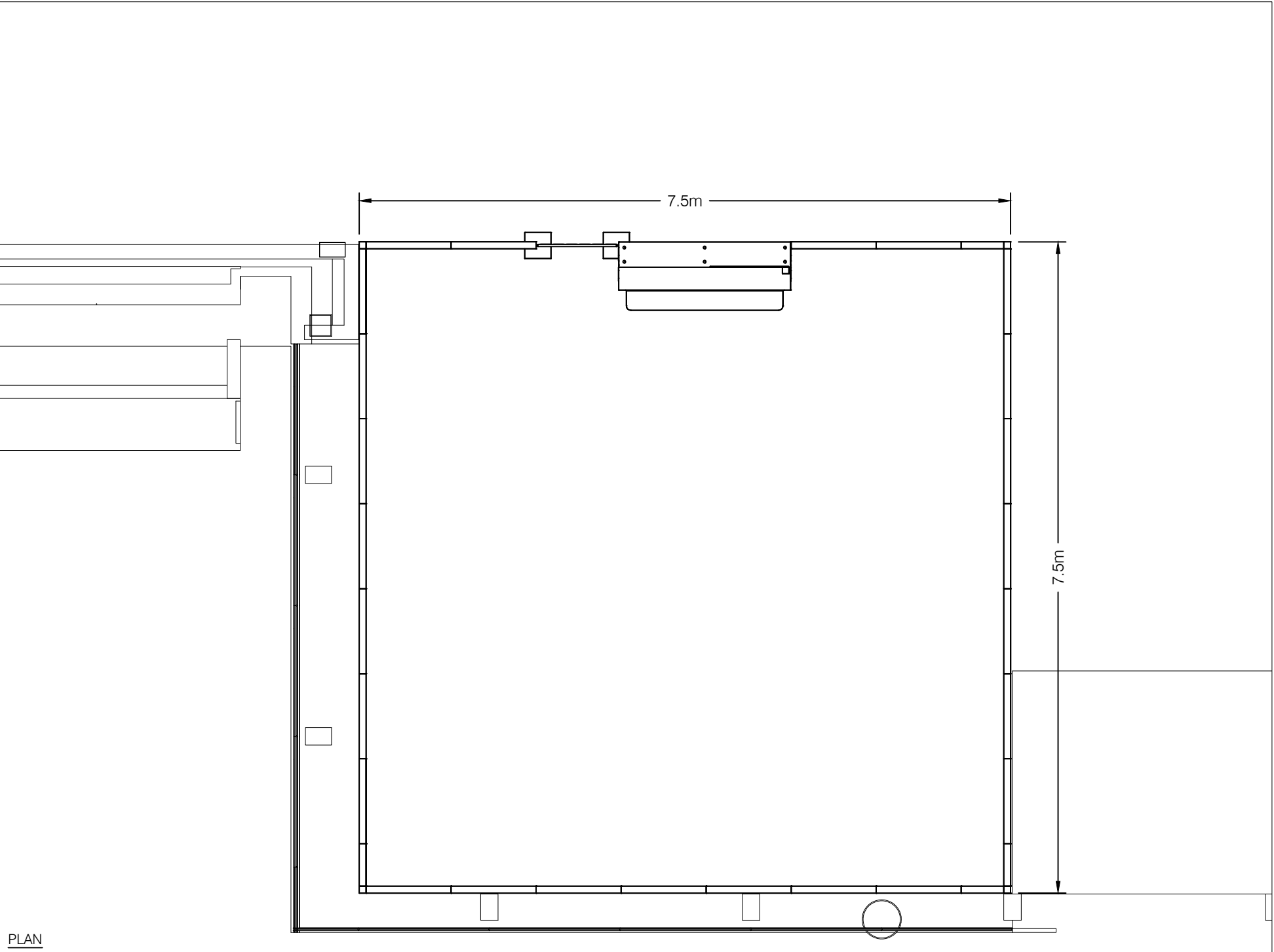


292"W x 92.5"H total size
fabric wall

PERSPECTIVE

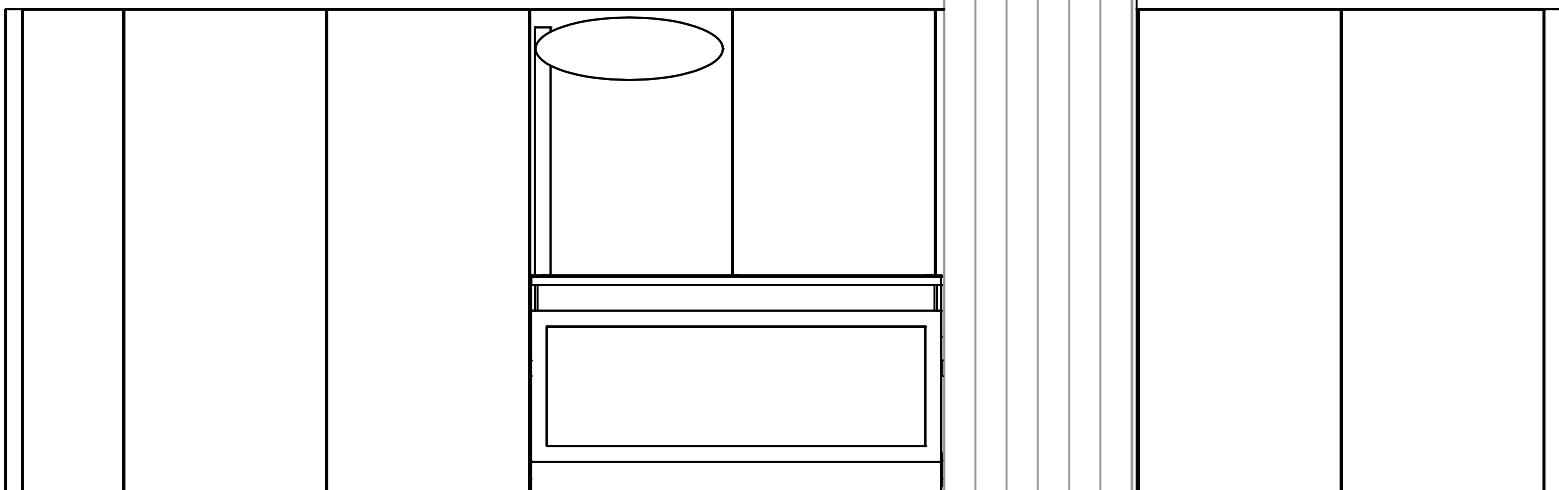


PERSPECTIVE



PLAN

7'-9 1/2"



ELEVATION

F R E E M A N

PROJECT Coat Check Room North Lobby
BOOTH # North Lobby, Level 1

SHOW NAME AAO 2019
SHOW DATE 10/12/2019 through 10/15/2019
SHOW LOCATION Moscone Center

SALES CONTACT Chris Speckels
JOB NUMBER 292944
LINE ITEM NUMBER 605433

CREATED BY David Lee

CREATION DATE 6/11/2019
REVISED 6/13/2019
PRODUCING BRANCH San Diego

FILE NAME: /Anaheim/Branch/WRDC/AA_San Francisco/2019/Am Acadmy of Ophthalmology (292944)/Expo/CAD/AA019 CoatCheckRoomNorthLobby L5605433 DESBW.dwg

The text, graphics, designs, logos, data compilations and information ("Content") contained in this Proposal are owned or controlled by Freeman and are protected by United States and international copyright and trade secret

Elevation

PARTS

I.D.	Qty	Type	Size	Area (SqFt)	Part Number	Description	Material	Color	Notes
A	1	Overlay Graphic Panel	36" x 12"	0		Oval Header	Ultraboard	Graphic	
	1	Drape	30" x 96"			4' x 8' Drape Panel	Banjo	Gray	
	2	Drape	96"			8' Drape Post	Steel	Silver	
	1	Drape	36"			Horizontal Drape Bar	Steel	Silver	
	4	PV80	3-5/32" x 3-5/32" x 93-1/2"			93-1/2"	Aluminum	Silver	
	1	SP Fabric	292" x 92 1/2"	187.57		Fabric with Beading	Triple White	Graphic	
1	25	SP Frame	39" x 93"			8' Full SmartPanel Frame	Aluminum	Silver	
	4	SP Frame	19-1/2" x 93"			8' Half SmartPanel Frame	Aluminum	Silver	
	7	SP Panel	19-1/8" x 92-5/8"	12.30		Panel From Edge to Edge	PVC	White	
	43	SP Panel	38-5/8" x 92-5/8"	24.84		Panel From Edge to Edge	PVC	White	
	1	SmartCounter Counter	78-3/4" x 31" x 42"			Base Counter Counter	Prebuilt	R0 G255 B255	
	1	SmartCounter Counter Top	78-3/4" x 11-1/2"			Std. Counter Top	1/4" Acrylic	Clear	
B	1	SmartCounter Graphic	72-11/16" x 23-3/16"	0		Inset Panel	3mm PVC	Graphic	

PARTS LIST