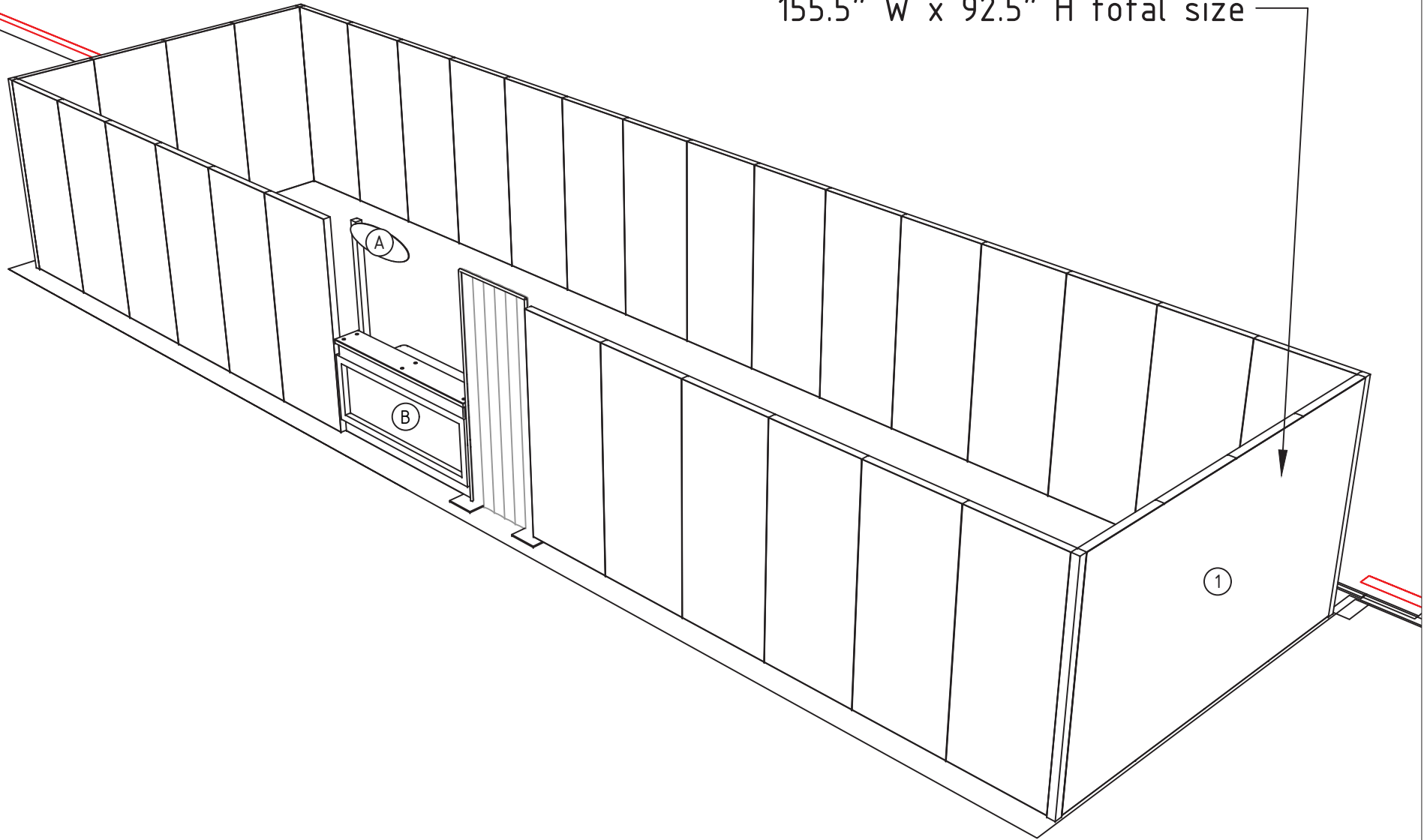
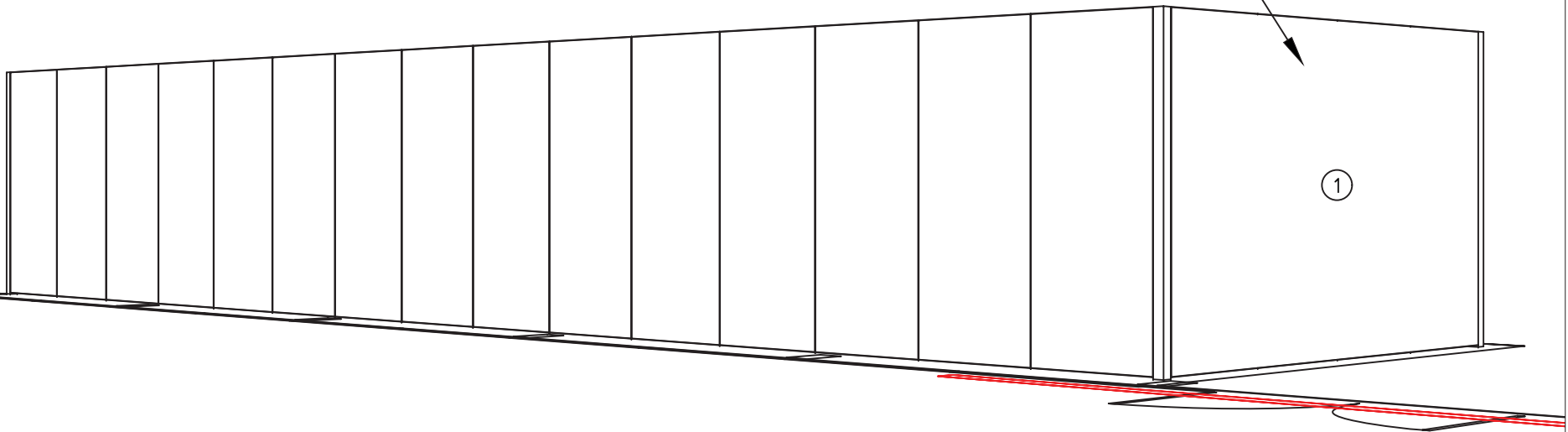
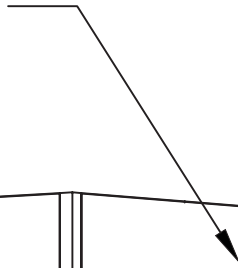


155.5" W x 92.5" H total size

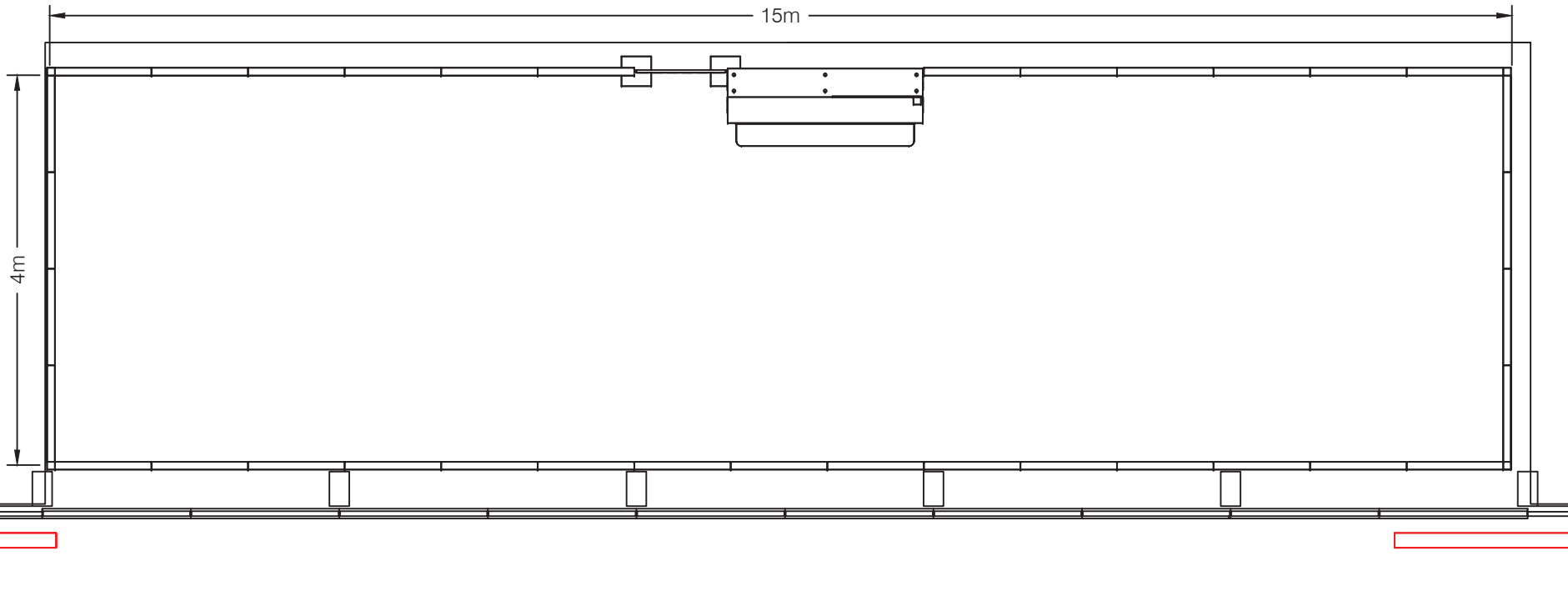


PERSPECTIVE

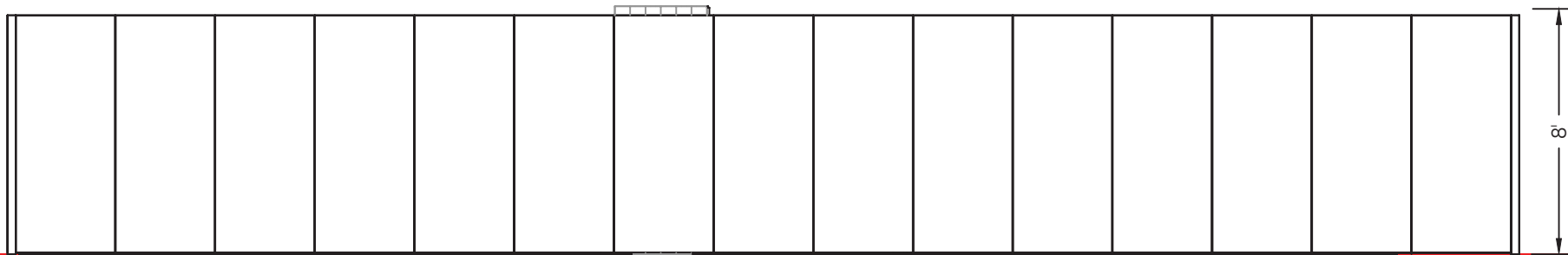
155.5" W x 92.5" H total size



PERSPECTIVE



PLAN



ELEVATION

PARTS

I.D.	Qty	Type	Size	Area (SqFt)	Part Number	Description	Material	Color	Notes
A	1	Overlay Graphic Panel	36" x 12"	0		Oval Header	PVC 3MM	Graphic	
	1	Drape	30" x 96"			4' x 8' Drape Panel	Banjo	Gray	
	2	Drape	96"			8' Drape Post	Steel	Silver	
	1	Drape	36"			Horizontal Drape Bar	Steel	Silver	
	4	PV80	3-5/32" x 3-5/32" x 93-1/2"			93-1/2"	Aluminum	Silver	
1	2	SP Fabric	155 1/2" x 92 1/2"	99.89		Fabric with Beading	Triple White	Graphic	
	35	SP Frame	39" x 93"			8' Full SmartPanel Frame	Aluminum	Silver	
	62	SP Panel	38-5/8" x 92-5/8"	24.84		Panel From Edge to Edge	PVC	White	
	1	SmartCounter Counter	78-3/4" x 31" x 42"			Base Counter Counter	Prebuilt	R0 G255 B255	
	1	SmartCounter Counter Top	78-3/4" x 11-1/2"			Std. Counter Top	1/4" Acrylic	Clear	
B	1	SmartCounter Graphic	72-11/16" x 23-3/16"	0		Inset Panel	3mm PVC	Graphic	

PARTS LIST