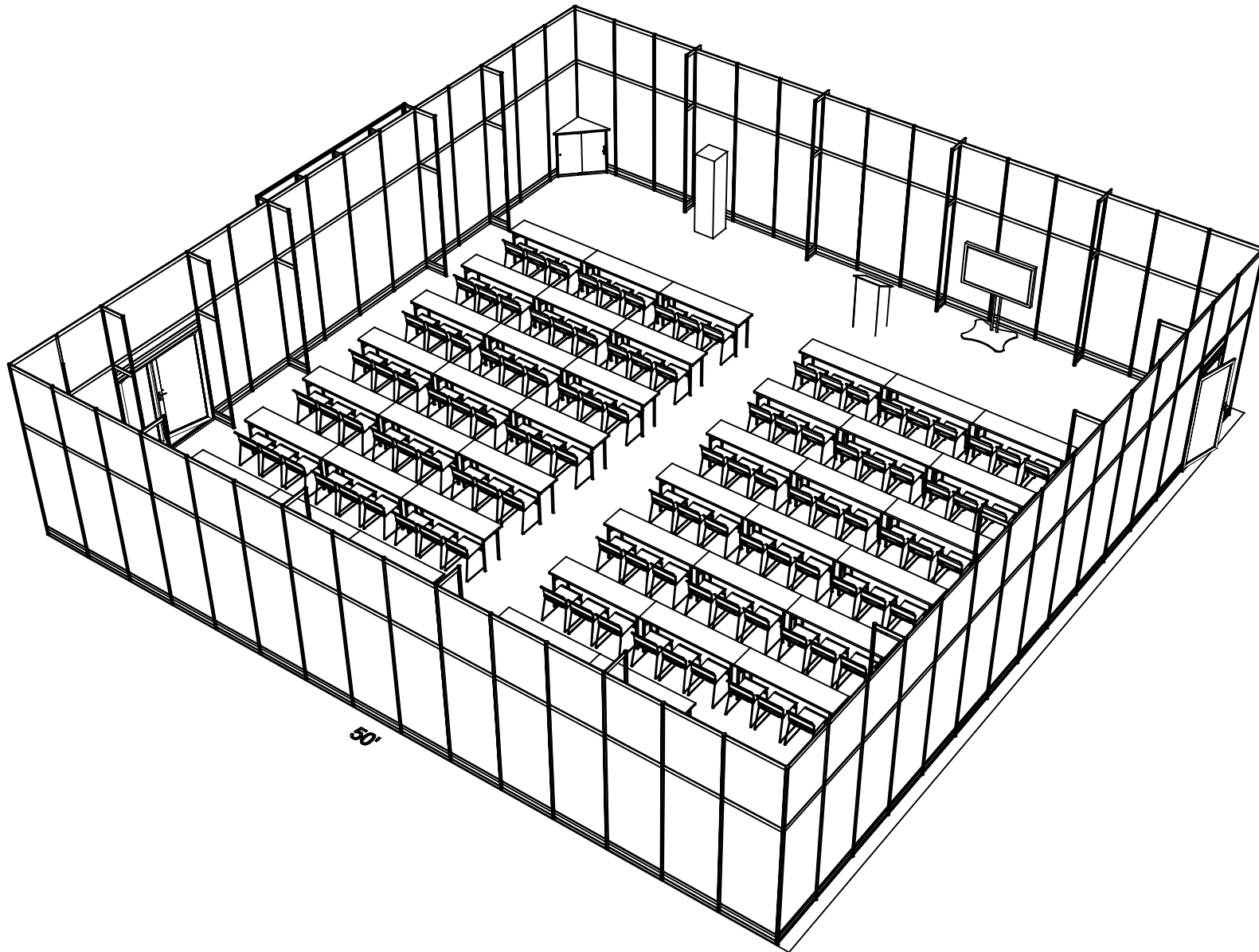
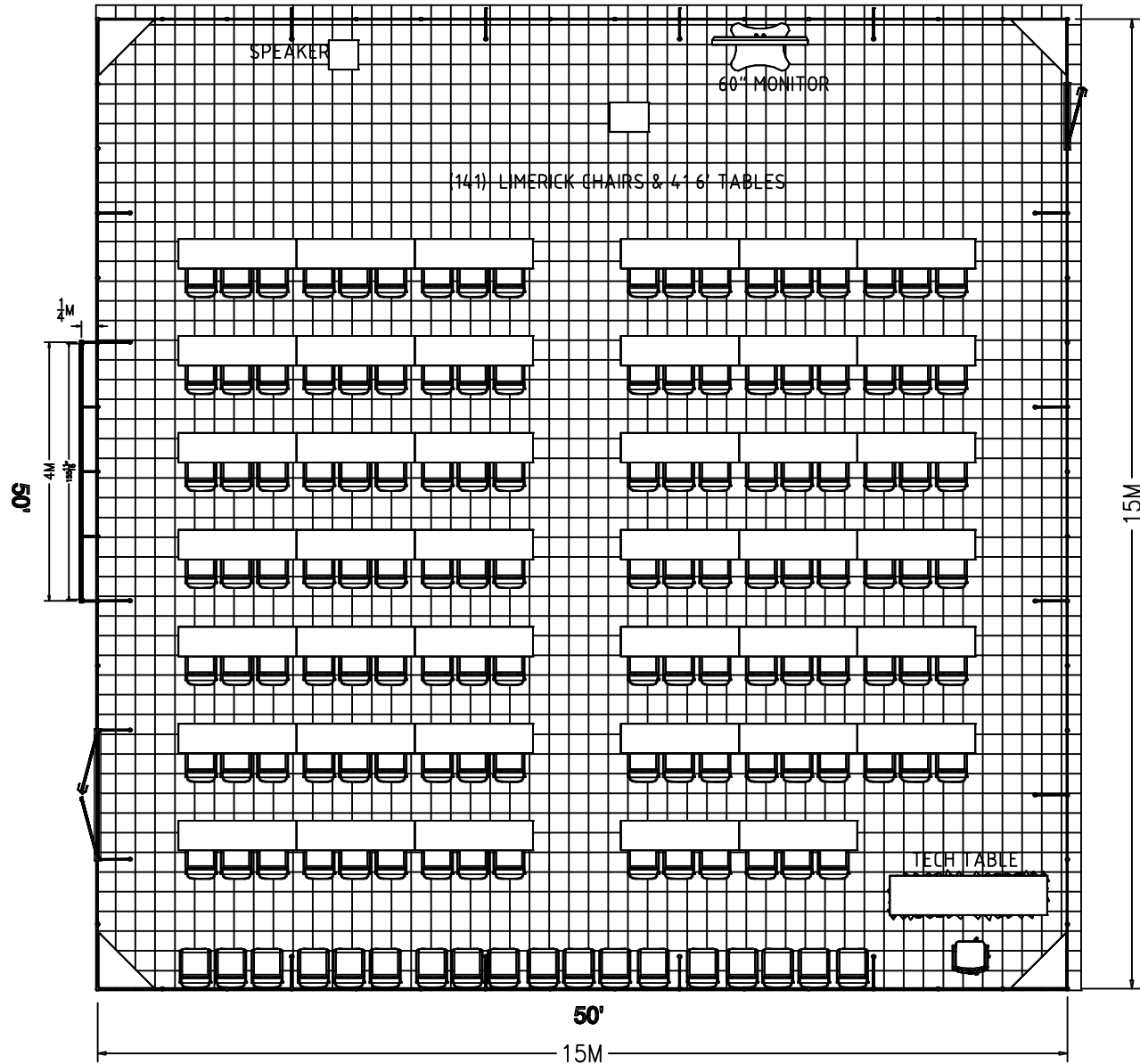


FRONT ISOMETRIC



FRONT ISOMETRIC

12" ELECTRICAL GRID



PLAN

F R E E M A N

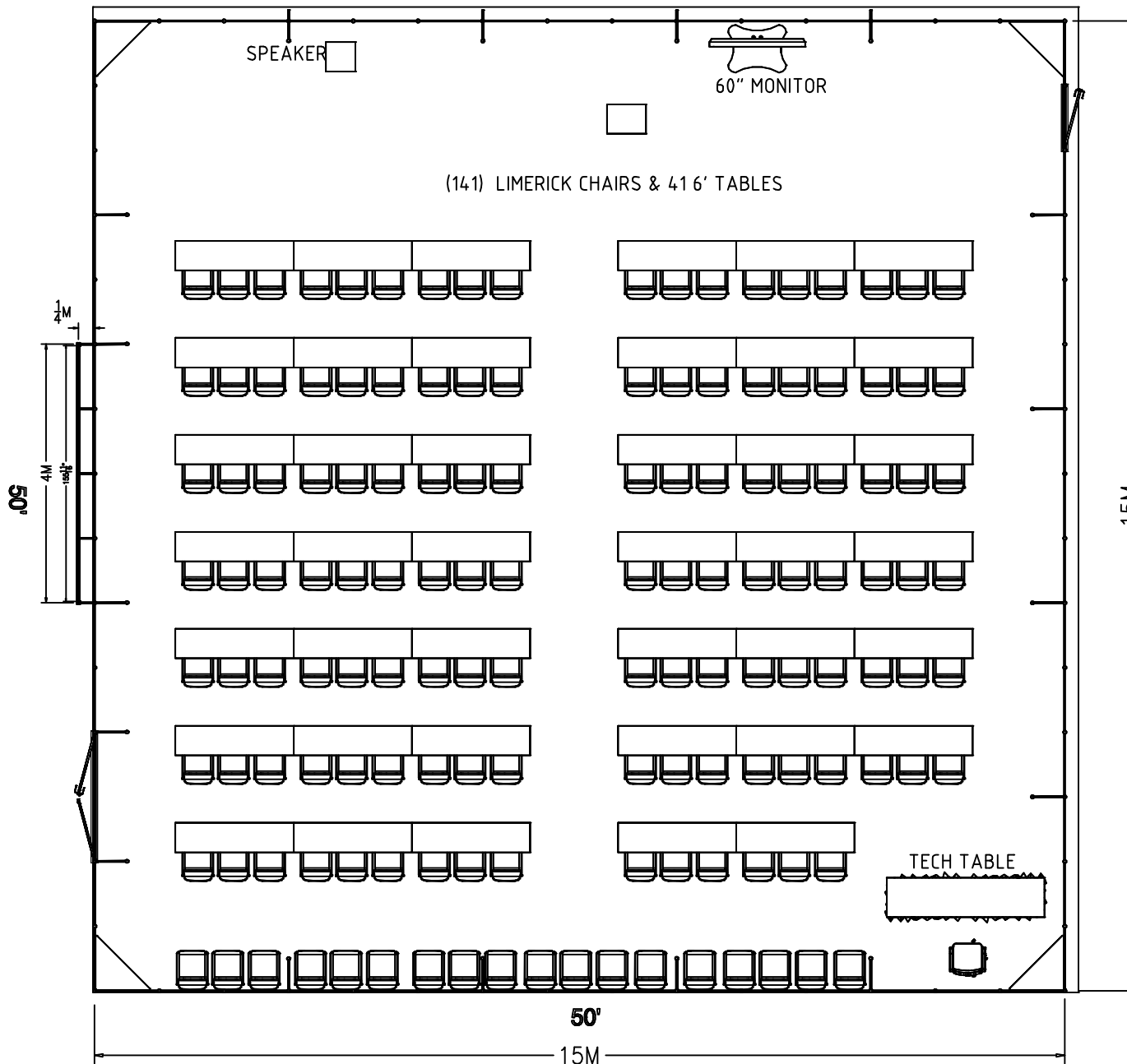
PROJECT Corporate Theater
BOOTH #

SHOW NAME SIR 2020
SHOW DATE 3/29/2020 through 4/1/2020
SHOW LOCATION Washington State Convention Center

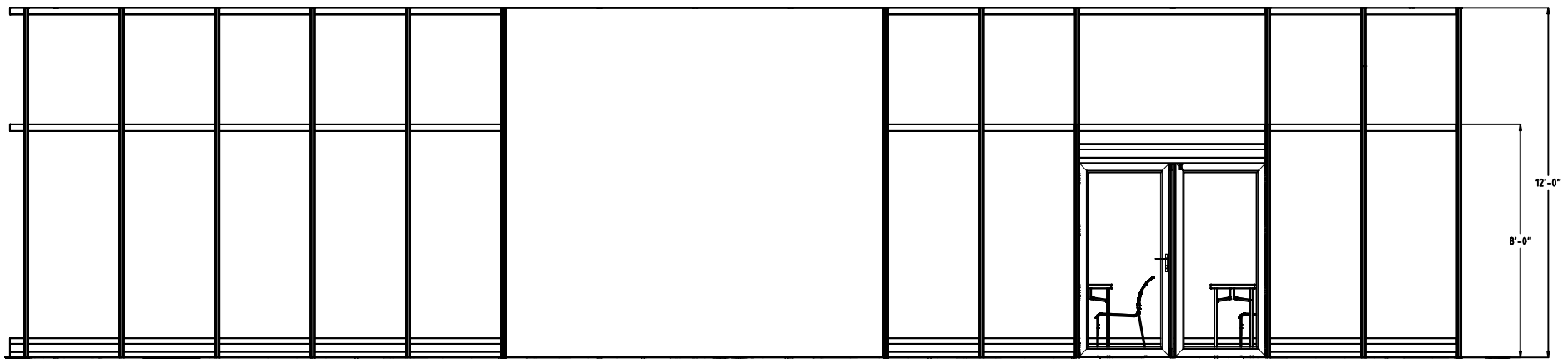
SALES CONTACT Janet Dyehouse
JOB NUMBER 480841
LINE ITEM NUMBER 5711377

CREATED BY Alvin Mendoza | Mark GRENATION DATE 8/8/2019
REVISED 8/8/2019
PRODUCING BRANCH Reno

FILE NAME P:/Chicago/Branch/NCRDC/_Out of Region/2020/SIR 480841/Exposition/Corporate Theater/AutoCad/SIR20 Corporate Theater 5711377 DES.dwg



PLAN



FRONT

F R E E M A N

PROJECT Corporate Theater
BOOTH #

SHOW NAME SIR 2020
SHOW DATE 3/29/2020 through 4/1/2020
SHOW LOCATION Washington State Convention Center

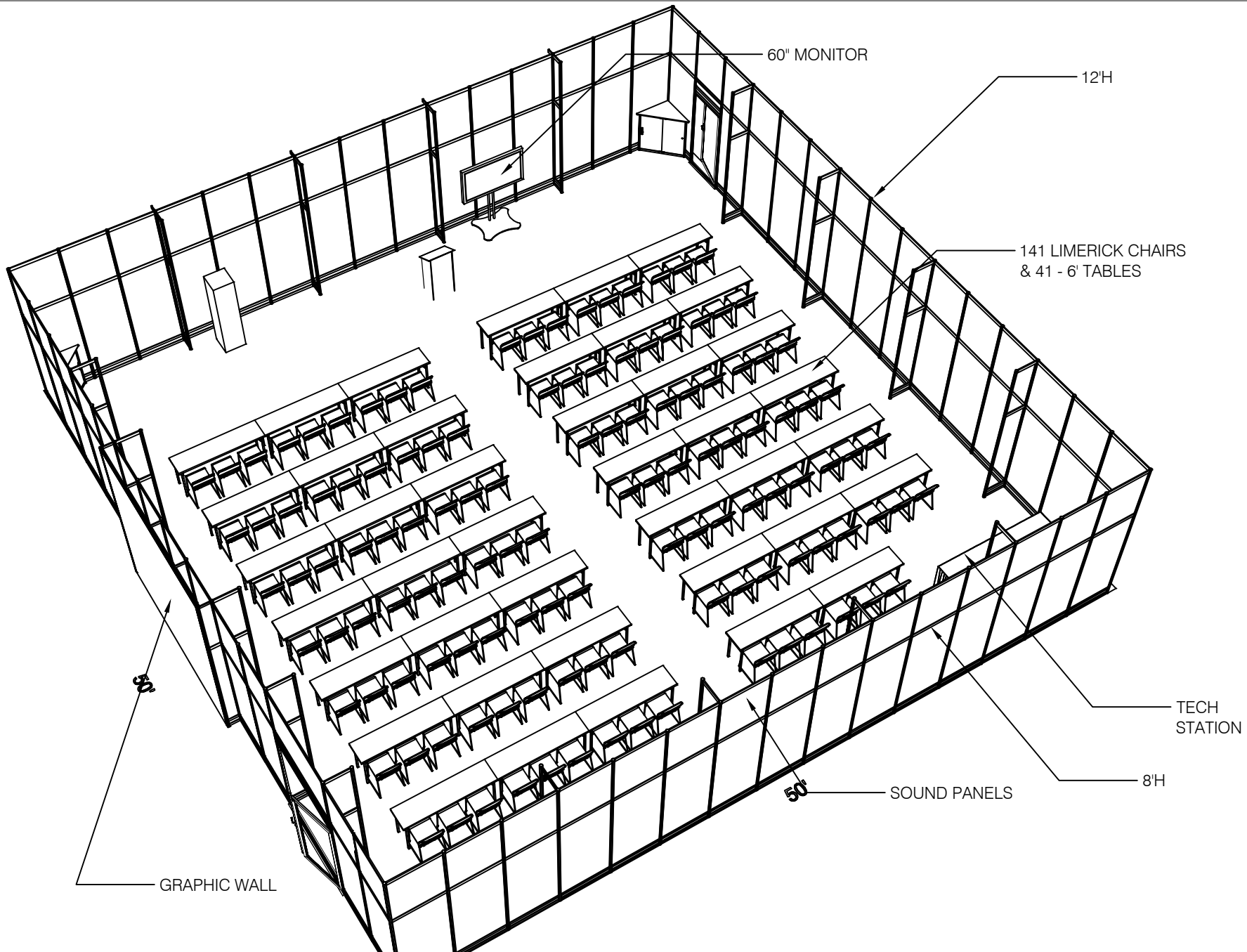
SALES CONTACT Janet Dyehouse
JOB NUMBER 480841
LINE ITEM NUMBER 5711377

CREATED BY Alvin Mendoza | Mark S. Freeman
DATE 8/8/2019
REVISION DATE 8/8/2019
REVISED 8/8/2019
PRODUCING BRANCH Reno

FILE NAME P:/Chicago/Branch/NCRDC/_Out of Region/2020/SIR 480841/Exposition/Corporate Theater/AutoCad/SIR20 Corporate Theater 5711377 DES.dwg

The text, graphics, designs, logos, data compilations and information ("Content") contained in this Proposal are owned or controlled by Freeman and are protected by United States and international copyright and trade secret laws. Modification or reproduction of the Content for any purpose is strictly prohibited.

Front



LABELS

F R E E M A N

PROJECT Corporate Theater
BOOTH #

SHOW NAME SIR 2020
SHOW DATE 3/29/2020 through 4/1/2020
SHOW LOCATION Washington State Convention Center

SALES CONTACT Janet Dyehouse
JOB NUMBER 480841
LINE ITEM NUMBER 5711377

CREATED BY Alvin Mendoza | Mark SRENTON DATE 8/8/2019
REVISED 8/8/2019
PRODUCING BRANCH Reno

FILE NAME P: /Chicago/Branch/NCRDC/_Out of Region/2020/SIR 480841/Exposition/Corporate Theater/AutoCad/SIR20 Corporate Theater 5711377 DES.dwg

The text, graphics, designs, logos, data compilations and information ("Content") contained in this Proposal are owned or controlled by Freeman and are protected by United States and international copyright and trade secret laws. Modification or reproduction of the Content for any purpose is strictly prohibited.

Labels

*Provided for preliminary estimating purposes only. NOT for production. May not be 100% accurate.

Version 1									
I.D.	Qty	Type	Size	Area (SqFt)	Part Number	Description	Material	Color	Notes
	1	P80	120"			10'-0"	Aluminum	Silver	
	75	P80	14.4"			12'-0"	Aluminum	Silver	
5	3	P50	140-3/8"			11'-8-3/8"	Aluminum	Silver	
	12	P31	42"			3'-6" (42")	Aluminum	Silver	
8	2	H45	8"			1/4M	Aluminum	Silver	
11	3	H45	8"			1/4M	Aluminum	Silver	
	16	H45	27-3/4"			3/4M	Aluminum	Silver	
	8	H45	39-15/16"			3/4MD	Aluminum	Silver	
12	2	H70	8"			1/4M	Aluminum	Silver	
16	3	H70	8"			1/4M	Aluminum	Silver	
	34	H70	17-7/8"			1/2M	Aluminum	Silver	
	116	H70	37-9/16"			1M	Aluminum	Silver	
	2	H70	76-15/16"			2M	Aluminum	Silver	
17	2	H200	8"			1/4M	Aluminum	Silver	
20	1	H200	76-15/16"			2M	Aluminum	Silver	
22	3	H200	8"			1/4M	Aluminum	Silver	
	17	H200	17-7/8"			1/2M	Aluminum	Silver	
	57	H200	37-9/16"			1M	Aluminum	Silver	
B	2	Wall Panel	8-1/2" x 45-5/8"	2.7		1/4M x 4'-1-3/8" (H45/H70)	PVC 3MM	Grey	
C	2	Wall Panel	8-1/2" x 87-5/8"	5.2		1/4M x 8'-1-3/8" (H70/H200)	PVC 3MM	Grey	
	8	Wall Panel	28-1/4" x 39"	7.6		3/4M x 3'-6" (H45/H45)	PVC 3MM	White	
G	1	Acrylic Panel	77-7/16" x 7-3/8"	4.0		2M x 11-7/8" (H70/H70)	Plexi	Smoke	
	58	Sound Panel	38-1/8" x 46-1/4"	12.2		1M x 4'-2-3/4" (H70/H70)	Impac	Grey	
	1	Sound Panel	77-7/16" x 46-1/4"	24.9		2M x 4'-2-3/4" (H70/H70)	Impac	Grey	
	57	Sound Panel	38-1/8" x 86-1/4"	22.8		1M x 8'-0" (H70/H200)	Impac	Grey	
	4	Std. Cab. Door	21" x 38-1/4"	5.6		3/4MD x 42" (H45/H45)	PVC	White	
	4	Std. Cab. Door	21" x 38-1/4"	5.6		3/4MD x 42" (H45/H45)	PVC 6MM	White	
	1	Door	1M	NA		1M Standard MIS Door	Standard	Standard	
	4	Counter Top	See Detail			Custom Standard Overlay	Wood	White	
	8	Door Track	39-15/16"			HDT 3/4MD	Standard	Standard	
	8	Door Track	37-1/2"			VDT 42" (H45/H45)	Standard	Standard	
	1	Electronics	61"			61"-Plasma Screen	Standard	Standard	
	1	Furniture Essentials	26" x 20" x 38"		N71046	Gray Gaslift Chair - with Arms	Fabric	Gray	
	41	Drape Tables	72" x 18" x 30"	0		6x18x30 Undraped Table	Standard	Standard	
	1	Drape Tables	96" x 24" x 30"			8x24x30	Standard	Standard	
N	2	Plex_Panel	31-7/8" x 73"			Plexi Door Filler Panel	Plexi	Smoke	
	141	Seating	18" x 17.75" x 33"			Limerick Chair	Plastic	Gray	
33	2	UD Part	0" x 0" x 14.4"	0		PS2	Aluminum	Silver	
34	2	UD Part	x x 14.4"	0		Snap Banner Frame	Aluminum	Silver	
35	2	UD Part	155-11/16" x x 0"	0		Snap Banner Frame	Aluminum	Silver	
Q	1	UD Part	155-3/16" x x 143-1/2"	0		Snap Banner Fabric	Fabric	White	