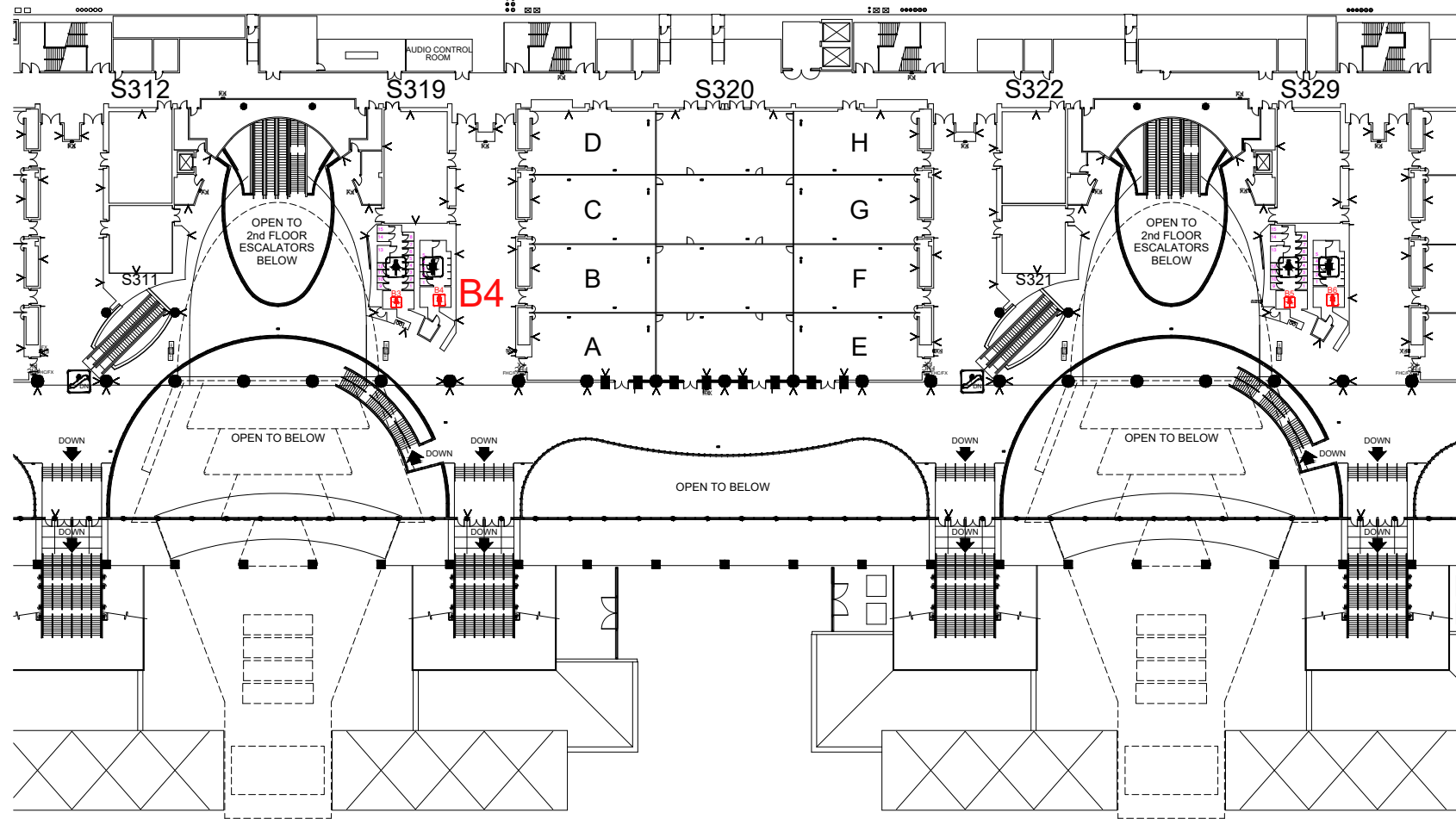


SOUTH BUILDING LEVEL 3 RESTROOM DOORS

SOUTH COMPLEX MEZZANINE LEVEL



F R E E M A N

Facility: OCCC - SOUTH BLDG
 Facility Location: LEVEL 3 - SOUTH LOBBY
 City & State: ORLANDO, FLORIDA
 Scale: CUSTOM
 Started: 10/23/2019
 Started By: GLORIA HURTADO, SE

NOT TO SCALE

DISCLAIMER

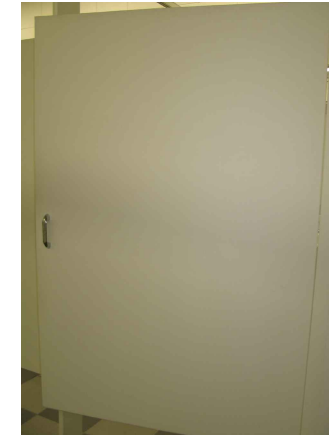
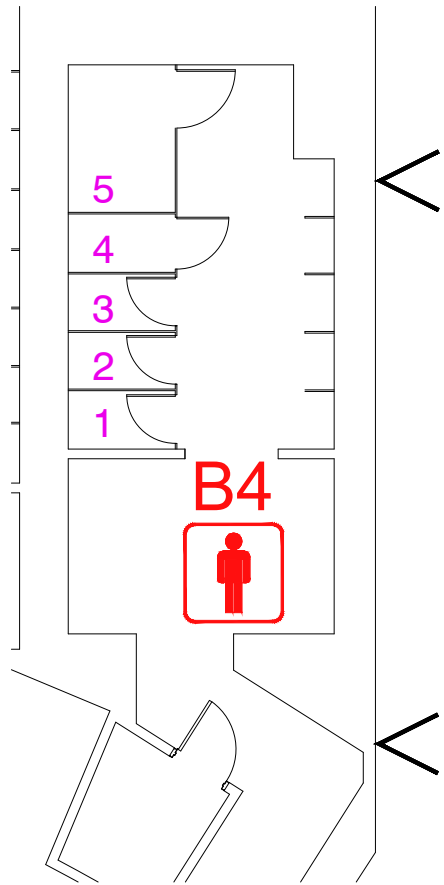
EVERY EFFORT HAS BEEN MADE TO ENSURE THE ACCURACY OF ALL INFORMATION CONTAINED ON THIS FLOORPLAN. HOWEVER NO WARRANTIES, EITHER EXPRESSED OR IMPLIED ARE MADE WITH RESPECT TO THIS FLOORPLAN. IF THE LOCATION OF BUILDING COLUMNS, UTILITIES OR OTHER ARCHITECTURAL COMPONENTS OF THE FACILITY IS A CONSIDERATION IN THE CONSTRUCTION OR USAGE OF AN EXHIBIT, IT IS THE SOLE RESPONSIBILITY OF THE EXHIBITOR TO PHYSICALLY INSPECT THE FACILITY TO VERIFY ALL DIMENSIONS AND LOCATIONS.

©COPYRIGHT 2007, FREEMAN CO.
ALL RIGHTS RESERVED.

FILE PATH: P:\Orlando\Branch\SERDC\Floor Plans\Facilities\Florida\Orlando\Orange County Convention Center\North South Concourse\Resources (Photos, Elevations, Details)\Specifications\Level 3\Bathroom-Mirrors-Stalls



SOUTH BUILDING LEVEL 3 RESTROOM DOORS



B4 MENS RESTROOM LVL 3 - DOOR STALLS/MIRRORS

ITEM	WIDTH	LENGTH	QUANTITY	MIRRORS
DOOR	25"	55"	3	7
DOOR	34"	55"	1	
DOOR	37"	55"	1	
TOTAL			5	

File Path: P:\Orlando\Branch\SERDC\Floor Plans\Facilities\Florida\Orlando\Orange County Convention Center\North South Concourse\Resources (Photos, Elevations, Details)\Specifications\Level 3\Bathroom-Mirrors-Stalls.L3.dwg | Tab Name: MENS B4 DOORS



VARIATIONS IN
DOOR SIZE ARE DUE
TO RESTROOM SIZE
& ADA
REQUIREMENTS

F R E E M A N

Facility:
OCCC - SOUTH BLDG

Facility Location:
LEVEL 3 - SOUTH LOBBY

City & State:
ORLANDO, FLORIDA

Scale: CUSTOM

Started: 10/23/2019
Started By: GLORIA HURTADO, SE

NOT TO SCALE

DISCLAIMER

EVERY EFFORT HAS BEEN MADE TO ENSURE THE ACCURACY OF ALL INFORMATION CONTAINED ON THIS FLOORPLAN. HOWEVER NO WARRANTIES, EITHER EXPRESSED OR IMPLIED ARE MADE WITH RESPECT TO THIS FLOORPLAN. IF THE LOCATION OF BUILDING COLUMNS, UTILITIES OR OTHER ARCHITECTURAL COMPONENTS OF THE FACILITY IS A CONSIDERATION IN THE CONSTRUCTION OR USAGE OF AN EXHIBIT, IT IS THE SOLE RESPONSIBILITY OF THE EXHIBITOR TO PHYSICALLY INSPECT THE FACILITY TO VERIFY ALL DIMENSIONS AND LOCATIONS.

©COPYRIGHT 2007, FREEMAN CO.
ALL RIGHTS RESERVED.