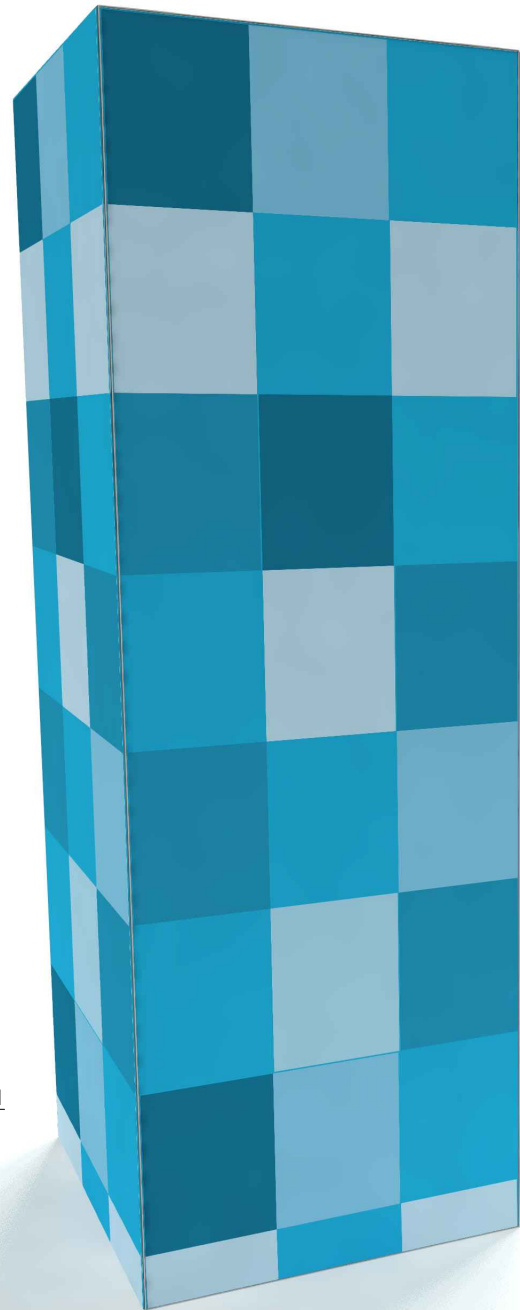
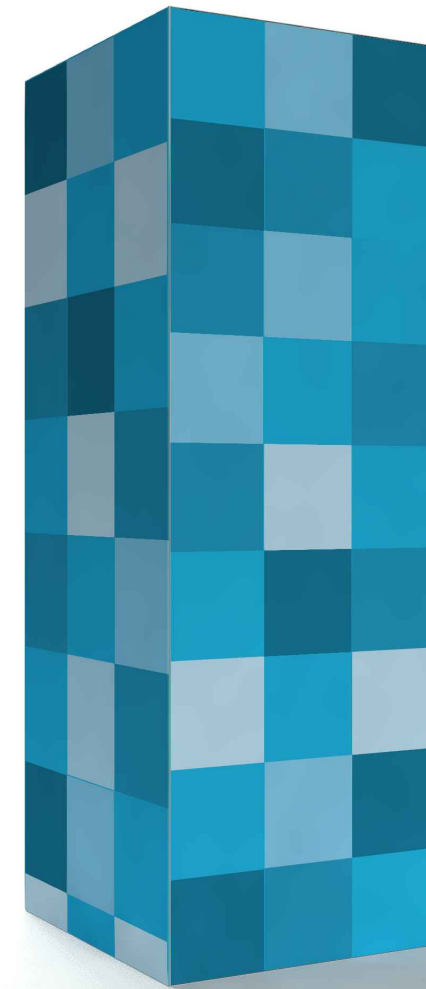
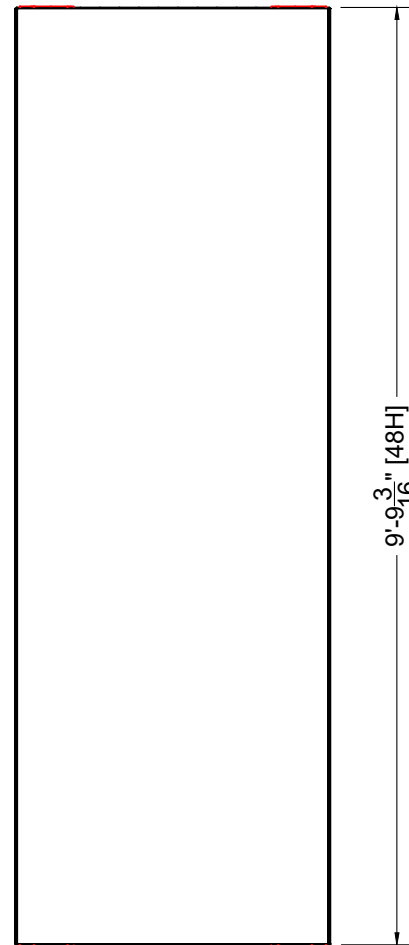


VIEW - 1

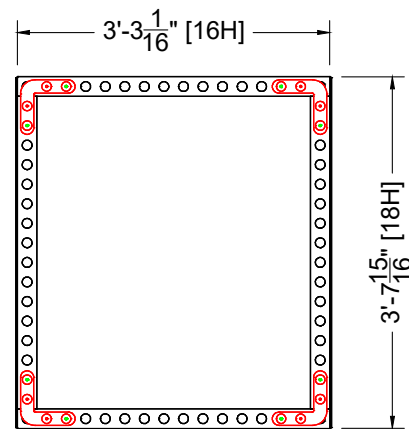


VIEW - 2

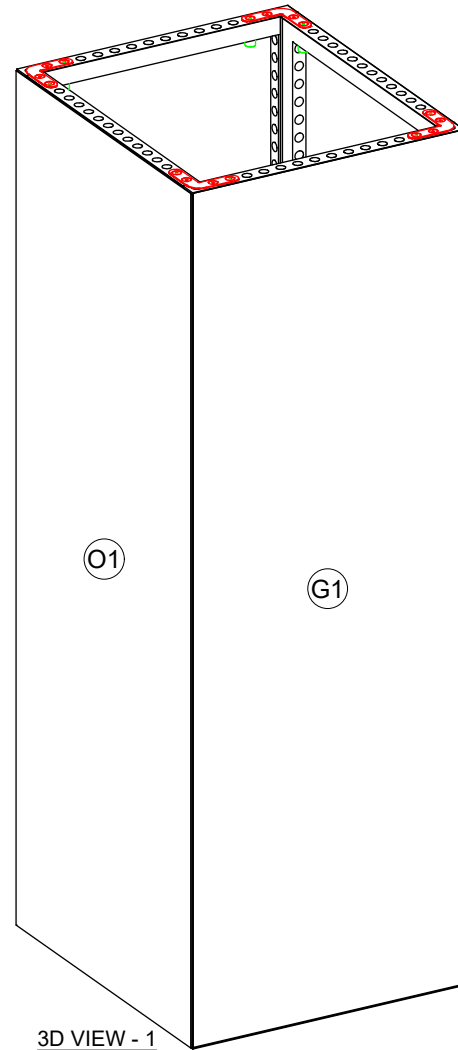




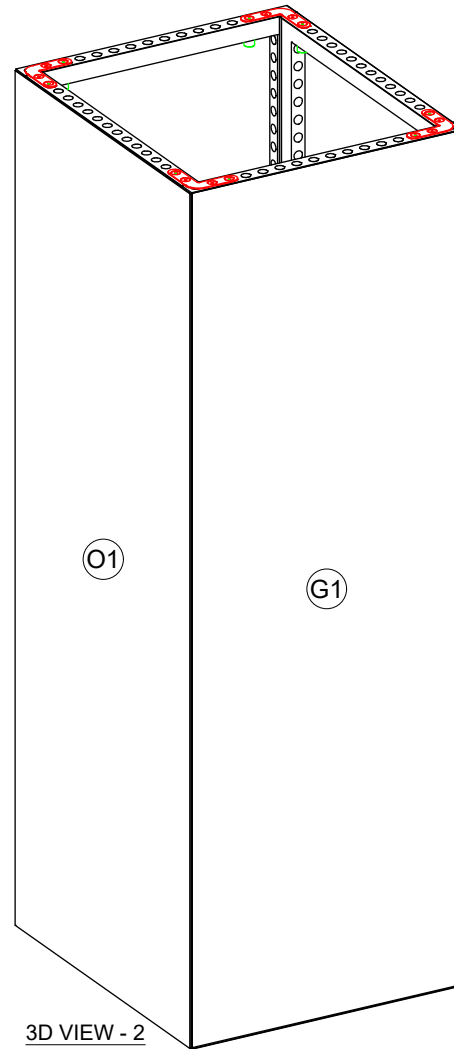
FRONT ELEVATION
Scale: 1/2" = 1'-0"



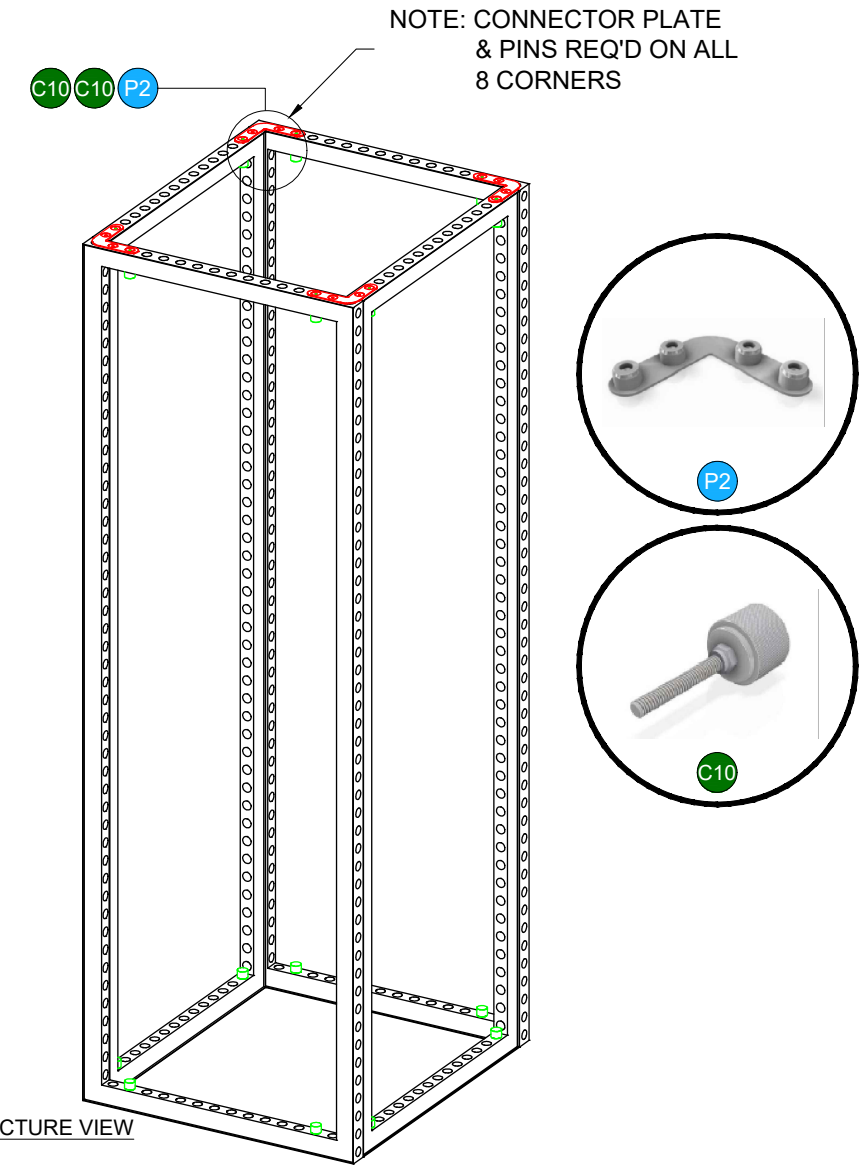
PLAN VIEW
Scale: 1/2" = 1'-0"



3D VIEW - 1



3D VIEW - 2



STRUCTURE VIEW

1M x 1M x 10ft Tower

I.D.	Qty	Type	Size	Area (SqFt)	Part Number	Description	Material	Color	Notes
O1	2	Overlay Graphic Panel	43-11/16" x 116-7/8"	35.5		Overlay Graphic Panel	PVC	Graphic	
	4	FLEX Frame-Straight	39-1/16" x 117-3/16"		60440044	Straight Frame 16 Hole x 48 Hole	Aluminum	Silver	SF16480001
P2	8	FLEX Acc-Pin Plate	Standard		60440059	4 Pin 90	Steel	Chrome	CO901280341C
C10	16	FLEX Part-Connector	Standard		60440047	Manual M8 Pin Connector	Aluminum	Silver	CO90120480066MKII
	2	Flex Insert	38-3/4" x 116-7/8"		60160052	Flex Insert [16x48 Hole]	PVC 3MM	White	Internal Panel
G1	2	Flex Graphic Insert	38-3/4" x 116-7/8"	31.5		Flex Insert - Graphic [16X48 holes]	PVC	Graphic	

Business Development Mgr.

Client Solutions Mgr.

Designer:

Detailer:

Last Saved:
9/27/2020 3:59 PM

Revision:
A

These original concepts and designs are sole property of FREEMAN. Any reproduction or use is prohibited without written consent of FREEMAN. © Copyright 2020 FREEMAN

FREEMAN

INNOVATION DEDICATED TO YOUR BRAND

File Name/Path: C:_Vault\Design Library\Event Collection 2.0\Components\CAD\Towers\T10-2 - 1M x 1M x 10ft Tower.dwg