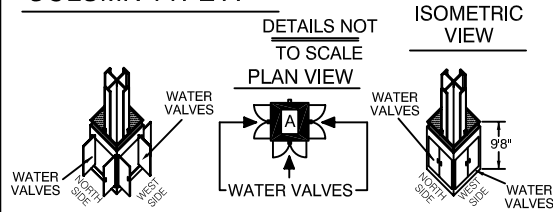


INDIVIDUAL COLUMN DETAILS

COLUMN TYPE A



COLUMN W/O FIRE HOSE CABINET

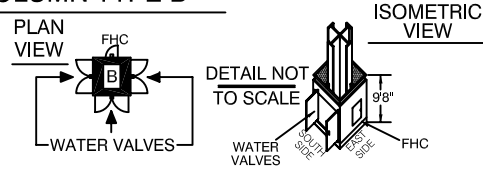
ALL DOORS OPEN 42"

EAST SIDE - NO ACCESS REQUIRED

NORTH, SOUTH & WEST SIDES -
WATER VALVES (LIMITED ACCESS)

FIRE STROBE SITS ON TOP OF EACH SIDE OF
COLUMN BASE (9'8" HIGH FROM THE FLOOR)

COLUMN TYPE B



COLUMN W/ FIRE HOSE CABINET (FHC)

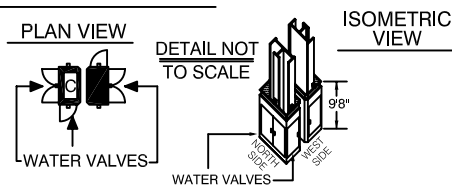
ALL DOORS OPEN 42"

EAST SIDE - FHC (TOTAL ACCESS)

NORTH, SOUTH & WEST SIDES -
WATER VALVES (LIMITED ACCESS)

FIRE STROBE SITS ON TOP OF EACH SIDE OF
COLUMN BASE (9'8" HIGH FROM THE FLOOR)

COLUMN TYPE C



SLIT COLUMN W/O FIRE HOSE CABINET

ALL DOORS OPEN 42"

NORTH SECTION

EAST SIDE - NO ACCESS REQUIRED

WEST & NORTH SIDE -
WATER VALVES (LIMITED ACCESS)

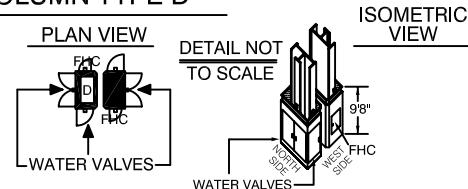
SOUTH SECTION

EAST & SOUTH SIDE -
WATER VALVES (LIMITED ACCESS)

WEST SIDE - NO ACCESS REQUIRED

FIRE STROBE SITS ON TOP OF EACH SIDE OF
COLUMN BASE (9'8" HIGH FROM THE FLOOR)

COLUMN TYPE D



SLIT COLUMN W/ FIRE HOSE CABINET (FHC)

ALL DOORS OPEN 42"

NORTH SECTION

EAST SIDE - FHC (TOTAL ACCESS)

WEST & NORTH SIDE -
WATER VALVES (LIMITED ACCESS)

SOUTH SECTION

EAST & SOUTH SIDE -
WATER VALVES (LIMITED ACCESS)

WEST SIDE - FHC (TOTAL ACCESS)

FIRE STROBE SITS ON TOP OF EACH SIDE OF
COLUMN BASE (9'8" HIGH FROM THE FLOOR)