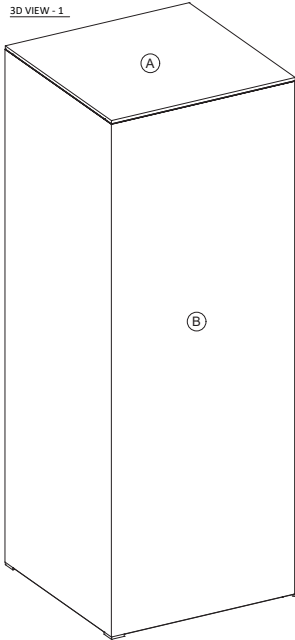
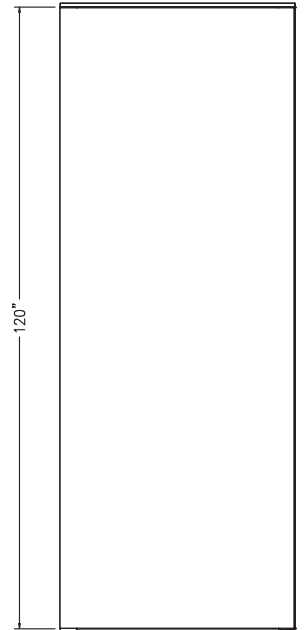


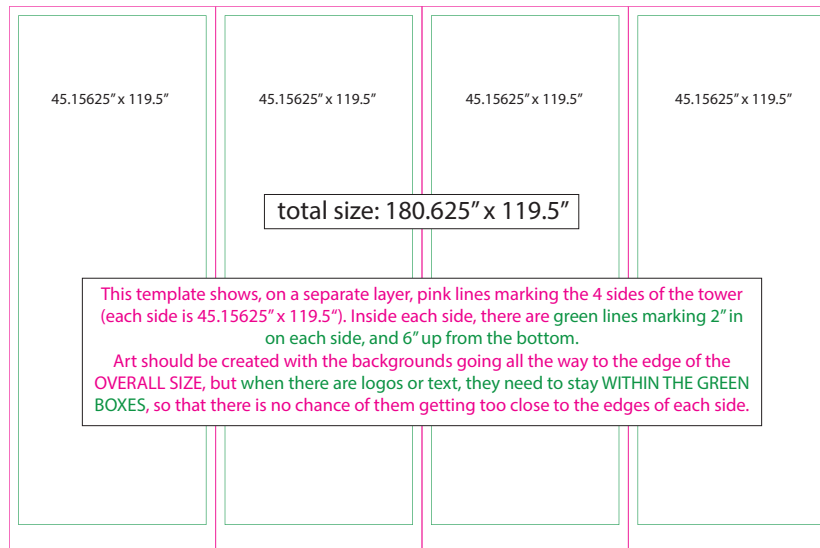
MATERIAL SPECIFICATIONS NORTH HALL PILLAR



ELEVATION VIEW



**Total size:
180.625" x 119.5"**



We recommend keeping the logos & text a minimum of 6" above the bottom of the pillar, and 2" in from each side of the pillar, as outlined in the diagram above.

Please submit your file as one 180.625" x 119.5" graphic. Please package your file so that all fonts & graphics will be accessible for production.

See the Freeman Graphics Artwork Guidelines on our Sponsorship Production [page](#) for additional information.

Submission instructions for creative files will be provided closer to the material deadline.

Questions? Contact Lindsey Hammond at lhammond@rsna.org or 630-571-7817.