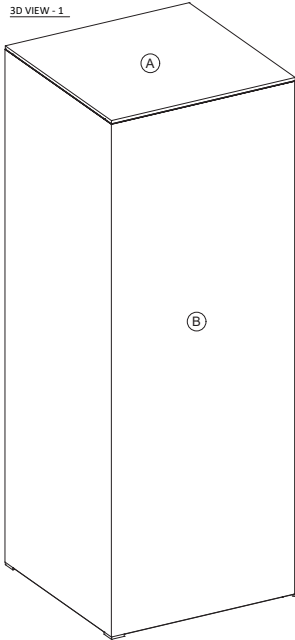
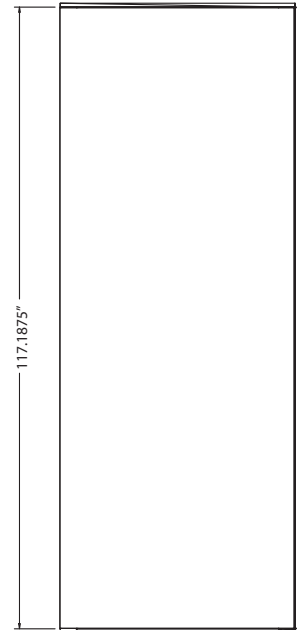


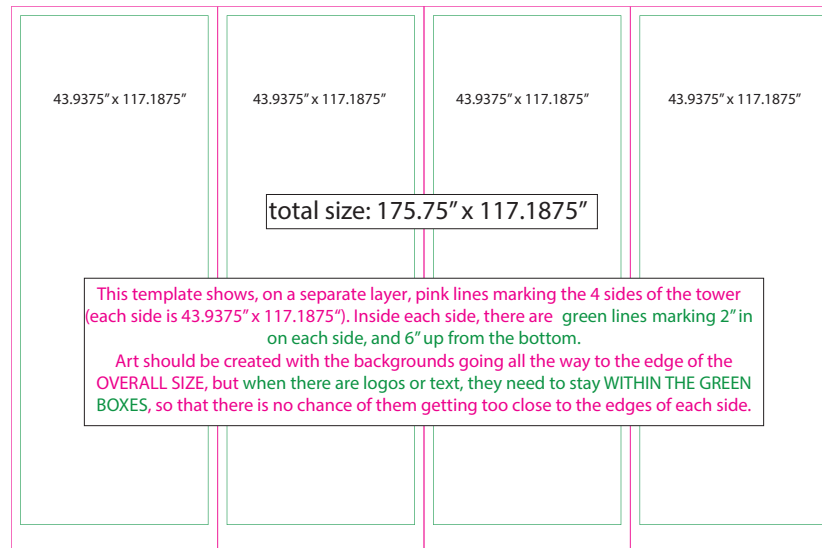
# MATERIAL SPECIFICATIONS NORTH HALL PILLAR



ELEVATION VIEW



**Total size:  
175.75" x 117.1875"**



**We recommend keeping the logos and text a minimum of 6" above the bottom of the pillar, and 2" in from each side of the pillar, as outlined in the diagram above.**

Please submit your file as one 175.75" x 117.1875" graphic. Please package your file so that all fonts & graphics will be accessible for production.

See the Freeman Graphics Artwork Guidelines on our Sponsorship Production [page](#) for additional information.

Submission instructions for creative files will be provided closer to the material deadline.

Questions? Contact Lindsey Hammond at [lhammond@rsna.org](mailto:lhammond@rsna.org) or 630-571-7817.