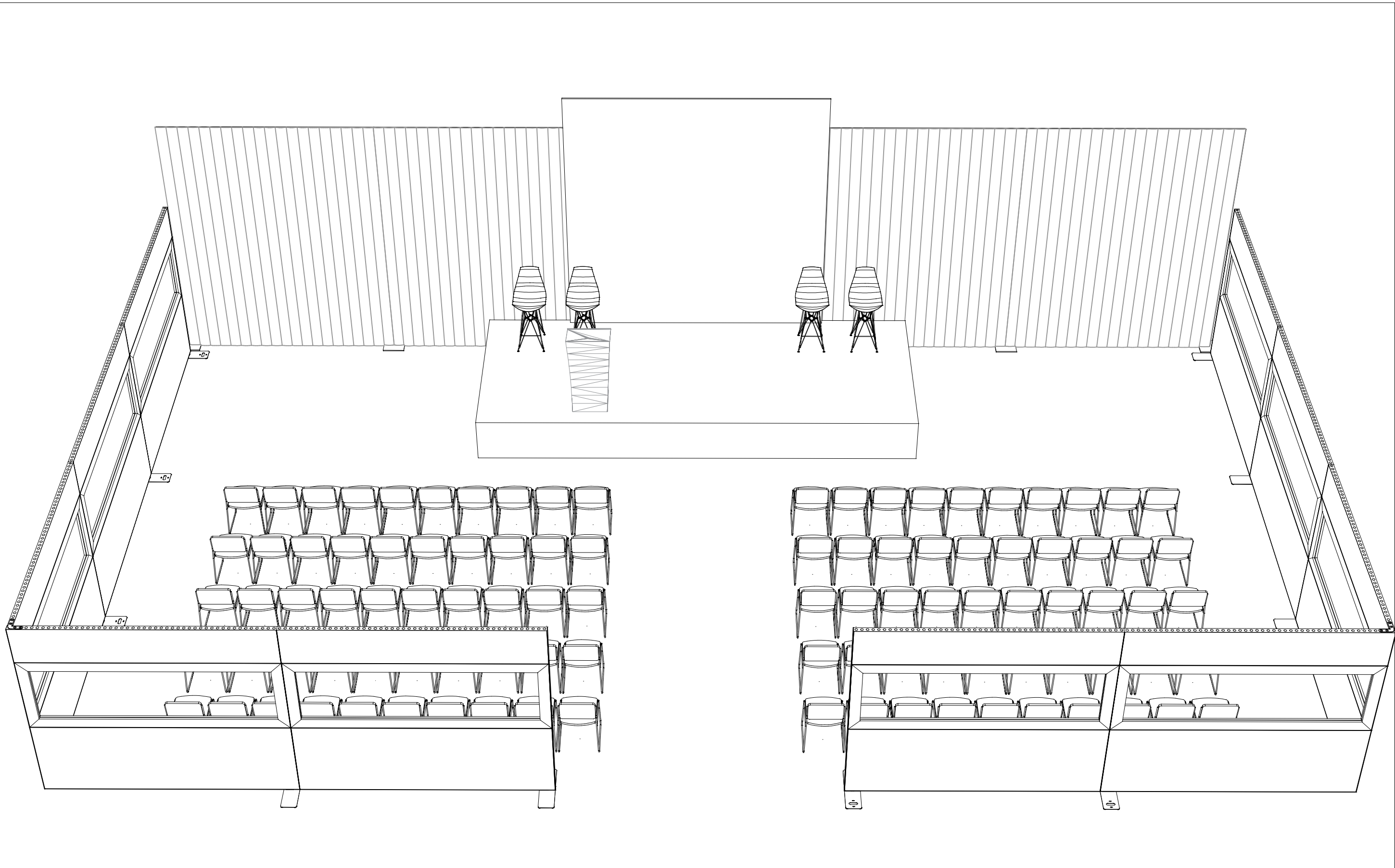
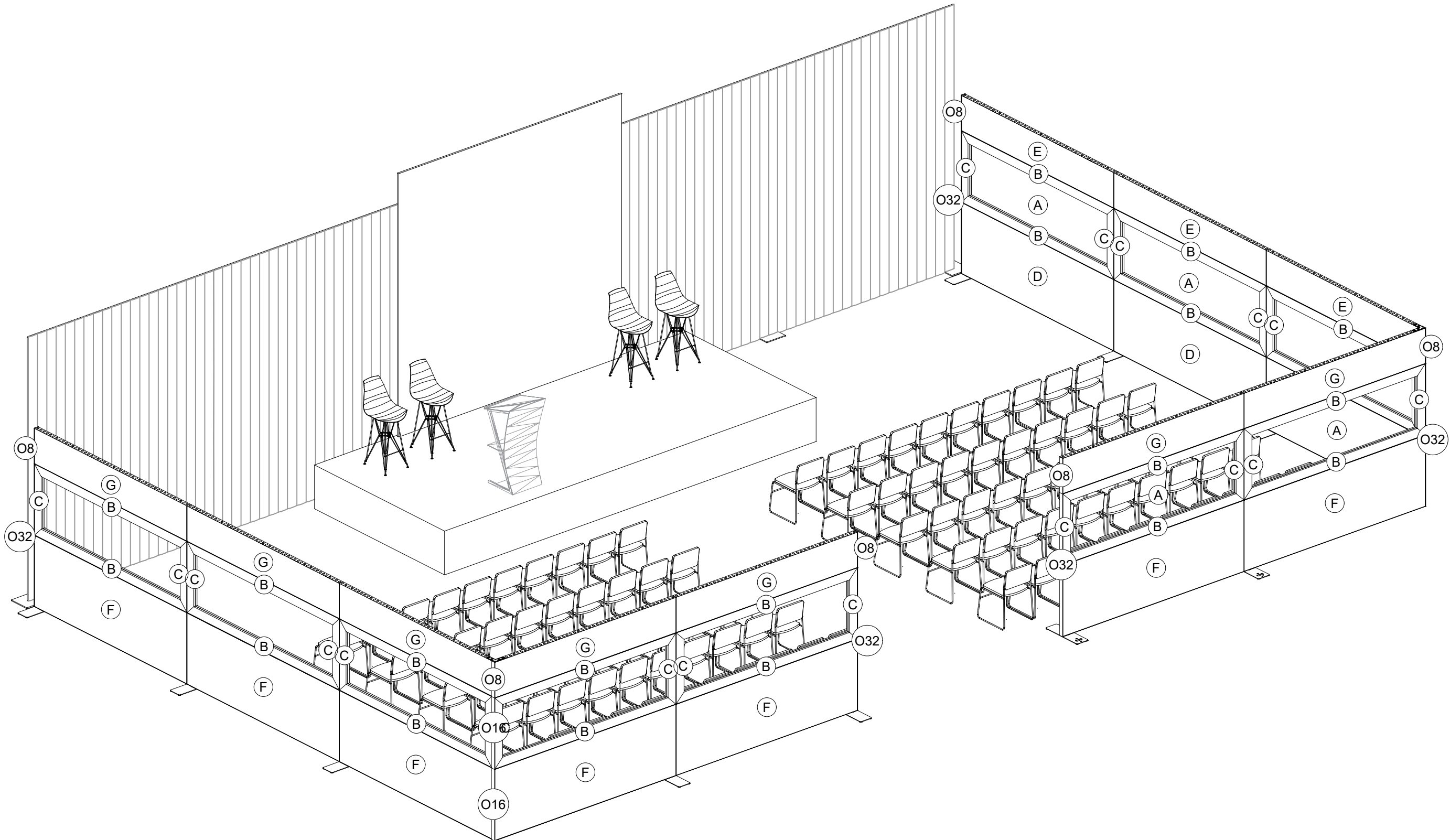
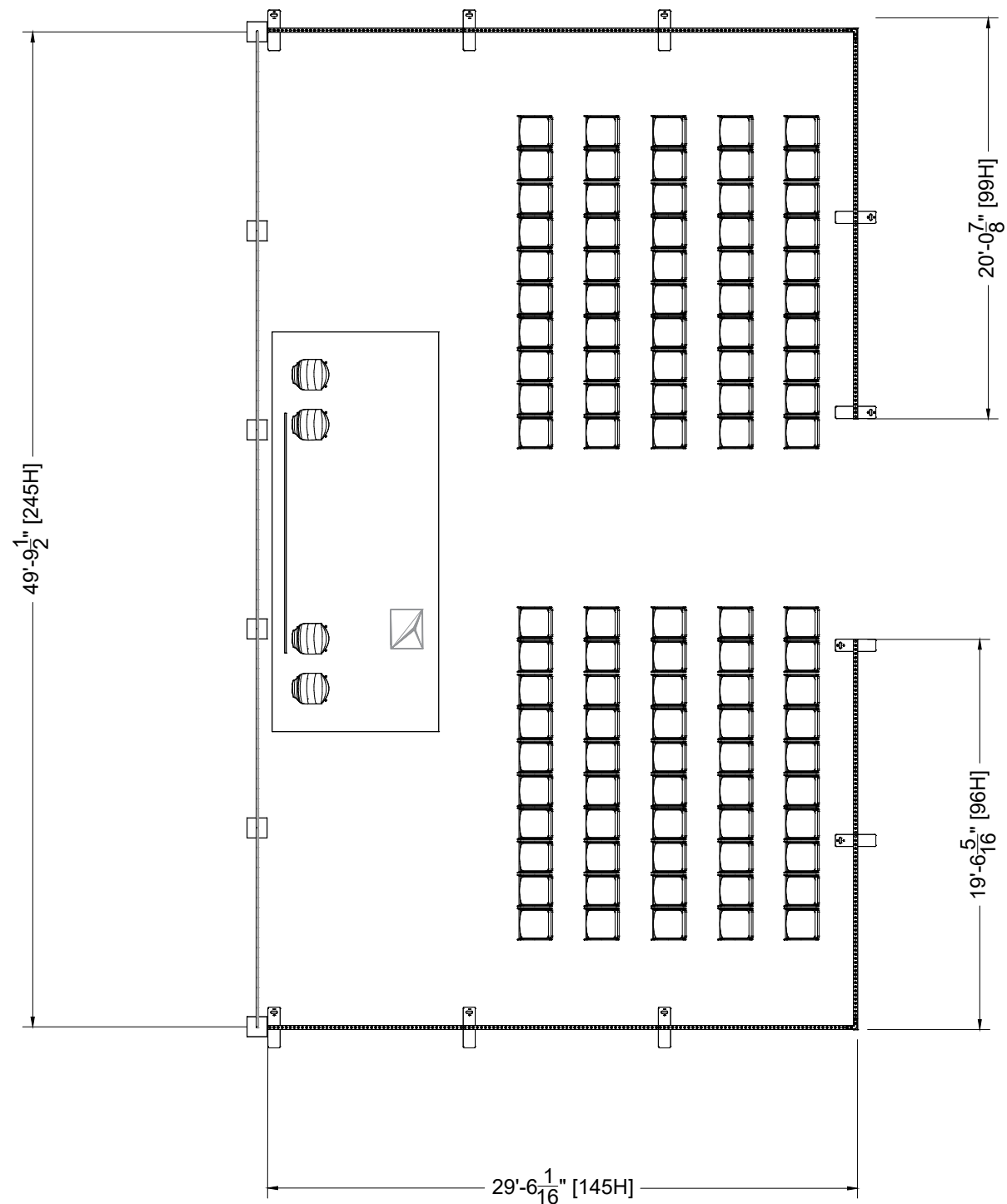


Theater Surround 10 x 20
Turnkey

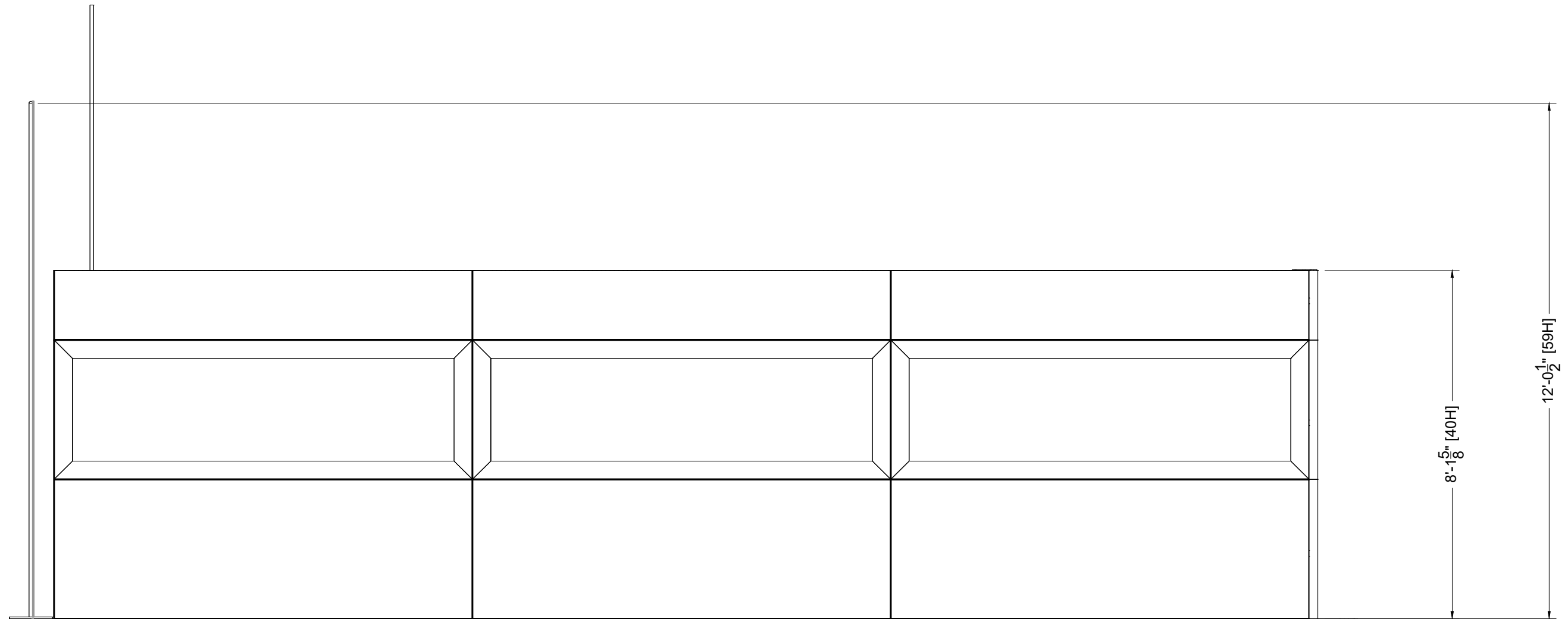


Theater Surround 10 x 20
Turnkey

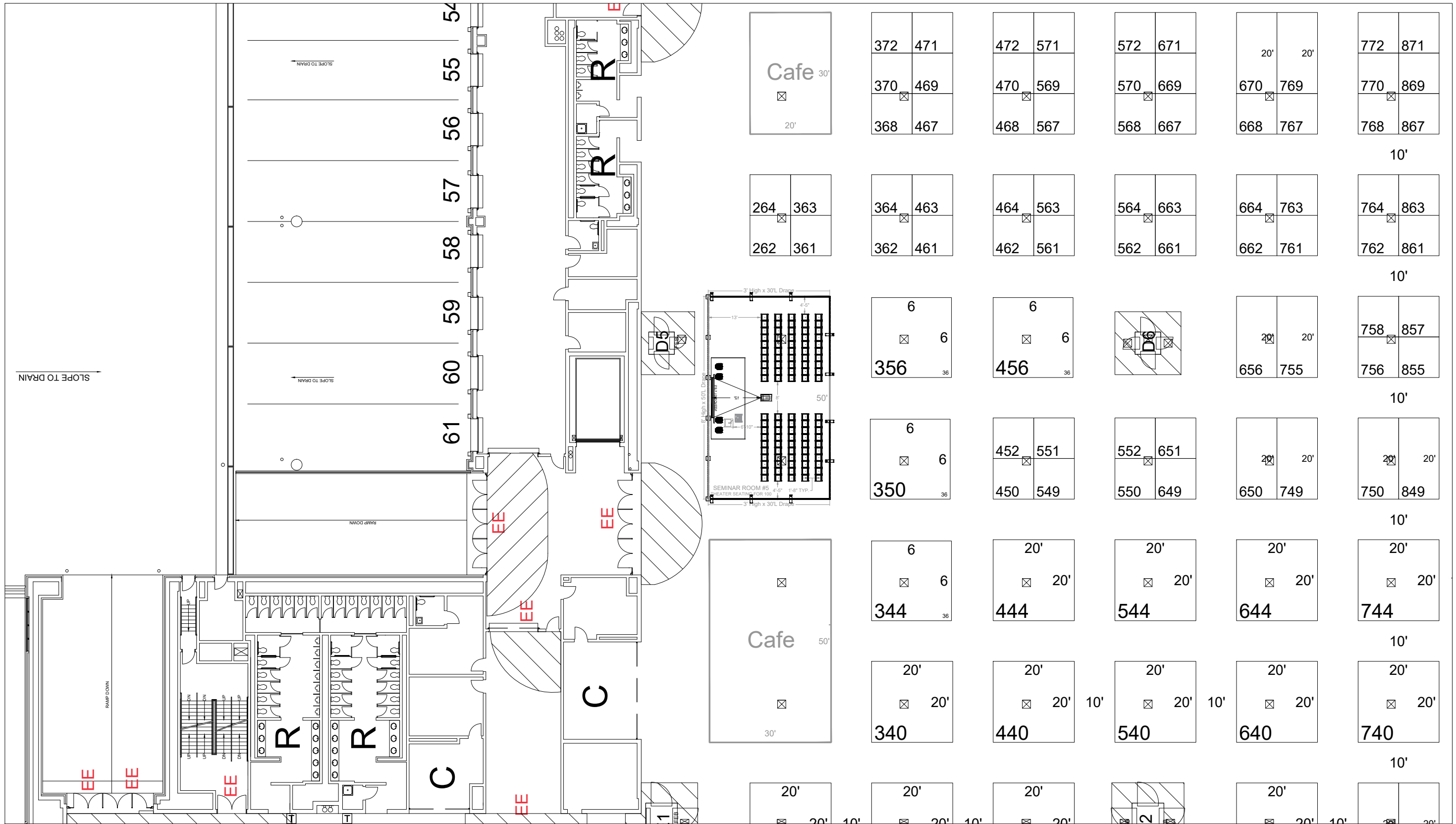




PLAN VIEW
Scale: 1/8" = 1'-0"



FRONT ELEVATION
Scale: 3/8" = 1'-0"



OVERALL FLOORPLAN
Scale: 11/256" = 1'-0"

THEATER SURROUND

I.D.	Qty	Type	Size	Area (SqFt)	Part Number	Description	Material	Color	Notes	Low Inv.	Weight
	1	Accessories	1" x 144" x 144"		<<CUSTOM>>	SCREEN	screen	SILVER			
	1	Accessories	100" x 240" x 24"		<<CUSTOM>>	STAGE (20' WIDE)	WOOD	BLACK			
	10	FLEX Frame-Straight	19-1/2" x 117-3/16" (19.5" x 117.2")		60400029	STRAIGHT FRAME 08 HOLE X 48 HOLE	Aluminum	Silver	SF08480001		183.90
	20	FLEX Frame-Straight	39-1/16" x 117-3/16" (39.062" x 117.188")		60400044	STRAIGHT FRAME 16 HOLE X 48 HOLE	Aluminum	Silver	SF16480001		420.20
BM	10	FLEX Acc-Base Plate	7-5/16" x 24-7/16" x 7/16"		60440082	BASE PLATE MEDIUM	Steel	Galvanized	CO90120480066MKII	X	125.60
C20	6	FLEX Acc-Pin Plate	1-9/16" x 2-7/8" x 2-1/16"		60440055	STAINLESS STEEL 90DEG CONNECTOR BASE	Steel	Stainless	CO901280222INOX		5.34
P2	4	FLEX Acc-Pin Plate	6-13/16" x 6-13/16" x 7/8"		60440060	4 PIN 90DEG CONNECTOR BASE	Metal	Chrome	CO901280341C		4.72
C1	70	FLEX Part-Connector	6-3/4" x 1-5/16" x 1-5/16"		60440043	MANUAL CLAMP CONNECTOR	Aluminum	Silver	CO90120250132POM		25.90
C10	30	FLEX Part-Connector	1-5/16" x 1-5/16" x 3-9/16"		60440047	MANUAL M8 PIN CONNECTOR	Aluminum	Silver	CO90120480066MKII		6.60
A	10	FLEX Insert Acrylic	31-13/16" x 109-15/16" (31.812" x 109.938")		<<CUSTOM>>	ACRYLIC INFILL FOR STRAIGHT FRAME 16 HOLE X 48 HOLE - CLEAR	Acrylic 1/8	Clear	w/ Female Velcro		
B	40	Flex Insert	5" x 116-7/8" (5.0" x 116.875")		<<CUSTOM>>	PVC-WFC 48 HOLE PANEL	PVC 3MM	White	w/ Female Velcro		
C	40	Flex Insert	5" x 38-3/4" (5.0" x 38.75")		60160117	PVC-WFC 16 HOLE PANEL	PVC 3MM	White	w/ Female Velcro	X	12.00
D	10	Flex Insert	38-3/4" x 116-7/8" (38.75" x 116.875")		60160052	PVC INFILL FOR STRAIGHT FRAME 16 HOLE X 48 HOLE	PVC 3MM	White	w/ Female Velcro		3.50
E	10	Flex Insert	19-1/4" x 116-7/8" (19.25" x 116.875")		60160036	PVC INFILL FOR STRAIGHT FRAME 08 HOLE X 48 HOLE	PVC 3MM	White	w/ Female Velcro		3.00
O8	4	Overlay Panel	2-7/16" x 19-1/2"	0.3	<<CUSTOM>>	PVC-END CAP (8 HOLE)	PVC 3MM	White			
O16	2	Overlay Panel	2-7/16" x 39-1/16"	0.7	<<CUSTOM>>	PVC-END CAP (16 HOLE)	PVC 3MM	White			
O32	4	Overlay Panel	2-7/16" x 78-1/8"	1.3	<<CUSTOM>>	PVC-END CAP (32 HOLE)	PVC 3MM	White			
	100	Accent Chair	21" x 23" x 32"		<<CUSTOM>>	Black Diamond Side Chair	Fabric	Black			
	4	Barstool	19" x 20" x 44"		<<CUSTOM>>	Zenith Barstool, White, Chrome	Molded Plastic	White			
	25	Drape	48" x 144"		<<CUSTOM>>	4' x 12' Drape Panel	Velour	Black			
	5	Drape Bar	120" x 1" x 1"		<<CUSTOM>>	Horizontal Drape Bar	Steel	Stainless			
	6	Drape Post	6" x 6" x 144"		<<CUSTOM>>	12' Drape Post	Steel	Stainless			
	1	Furniture	23-1/2" x 19-1/2" x 46-3/8"		<<CUSTOM>>	PODIUM	wood	tbd			
F	10	Flex Graphic Insert	38-3/4" x 116-7/8"		<<CUSTOM>>	GRAPHIC INFILL FOR STRAIGHT FRAME 16 HOLE X 48 HOLE	PVC 3MM	Graphic	w/ Female Velcro		
G	10	Flex Graphic Insert	19-1/4" x 116-7/8"		<<CUSTOM>>	GRAPHIC INFILL FOR STRAIGHT FRAME 08 HOLE X 48 HOLE	PVC 3MM	Graphic	w/ Female Velcro		
O8	2	Overlay Graphic Panel	2-7/16" x 19-1/2"		<<CUSTOM>>	PVC-GRAPHIC-END CAP (8 HOLE)	PVC 3MM	GRAPHIC			
O16	2	Overlay Graphic Panel	2-7/16" x 39-1/16"		<<CUSTOM>>	PVC-GRAPHIC-END CAP (16 HOLE)	PVC 3MM	GRAPHIC			
				Total Area:	2.30					Total Weight:	790.76