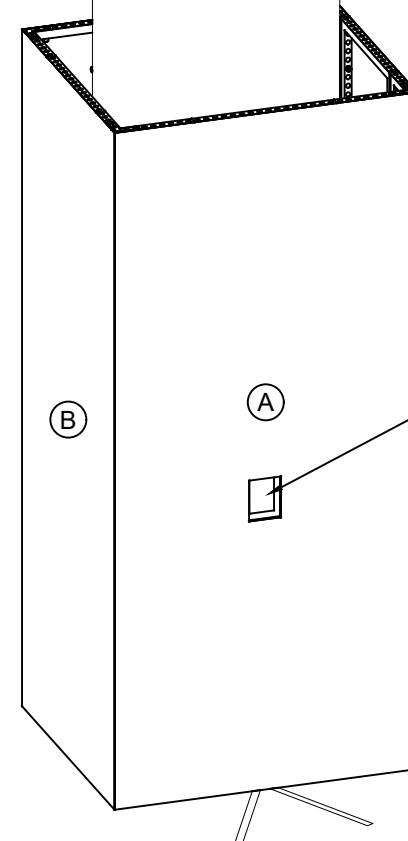
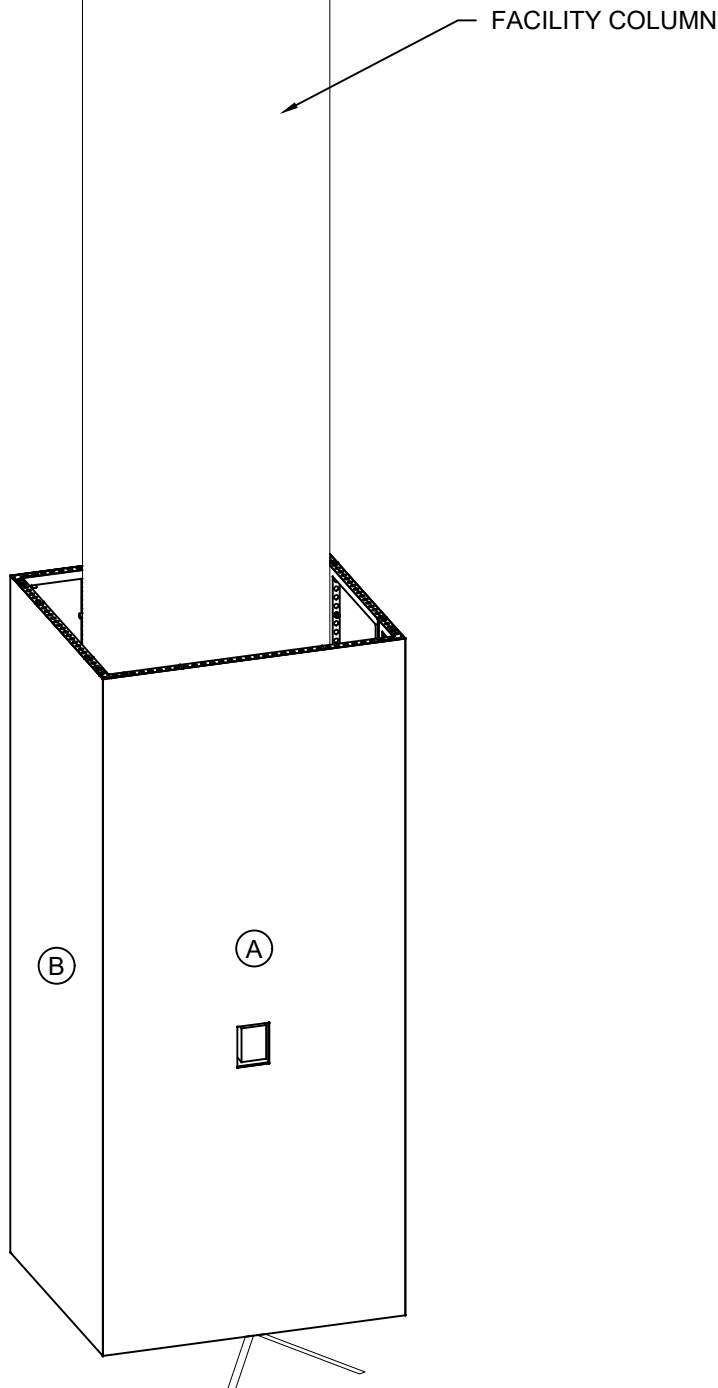


QTY: 2

(4) TOTAL COLUMN WRAPS



BUILDING COLUMNS HAVE FIRE STROBES FRONT AND BACK.

WINDOW CUTOUTS PROVIDED IN WOOD PLATE TO ALLOW STROBE TO REMAIN VISIBLE.

3D VIEW - 1

LESS THAN 30 DAYS OUT

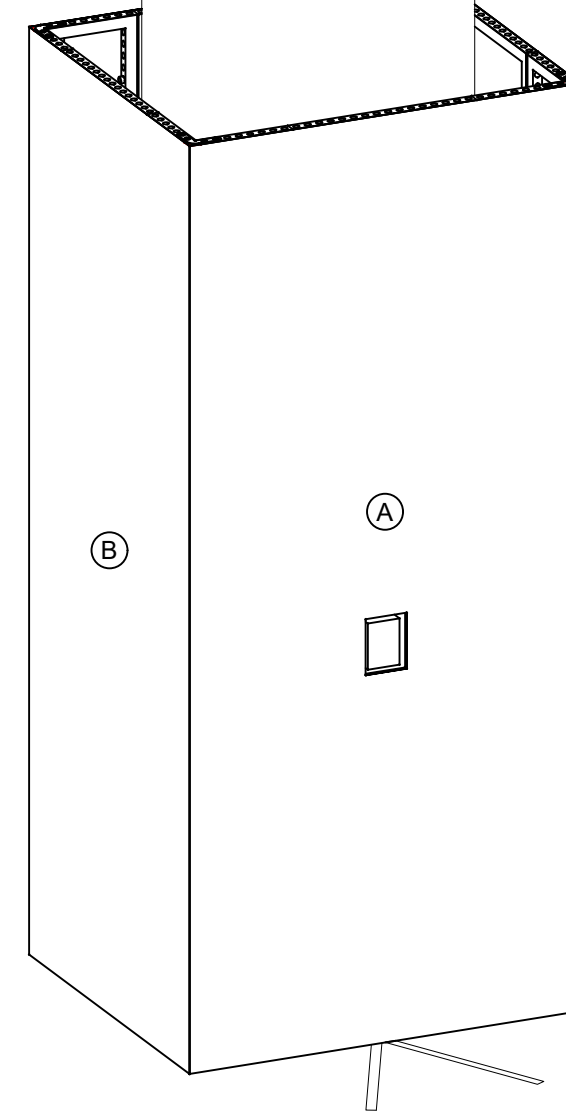
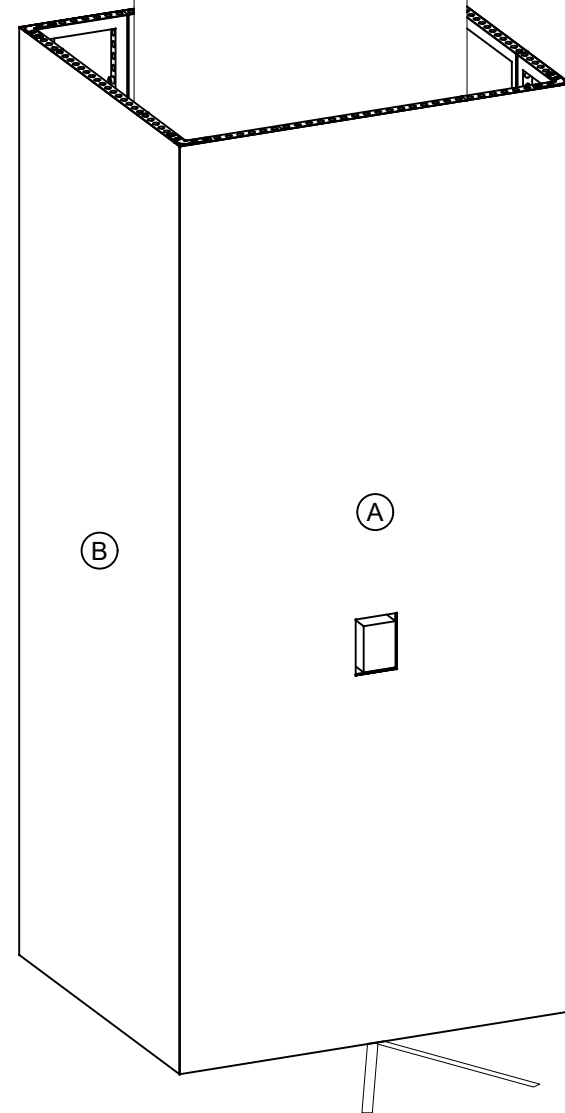


* 0 0 0 1 - 1 0 2 8 - 0 *

MORE THAN 30 DAYS OUT



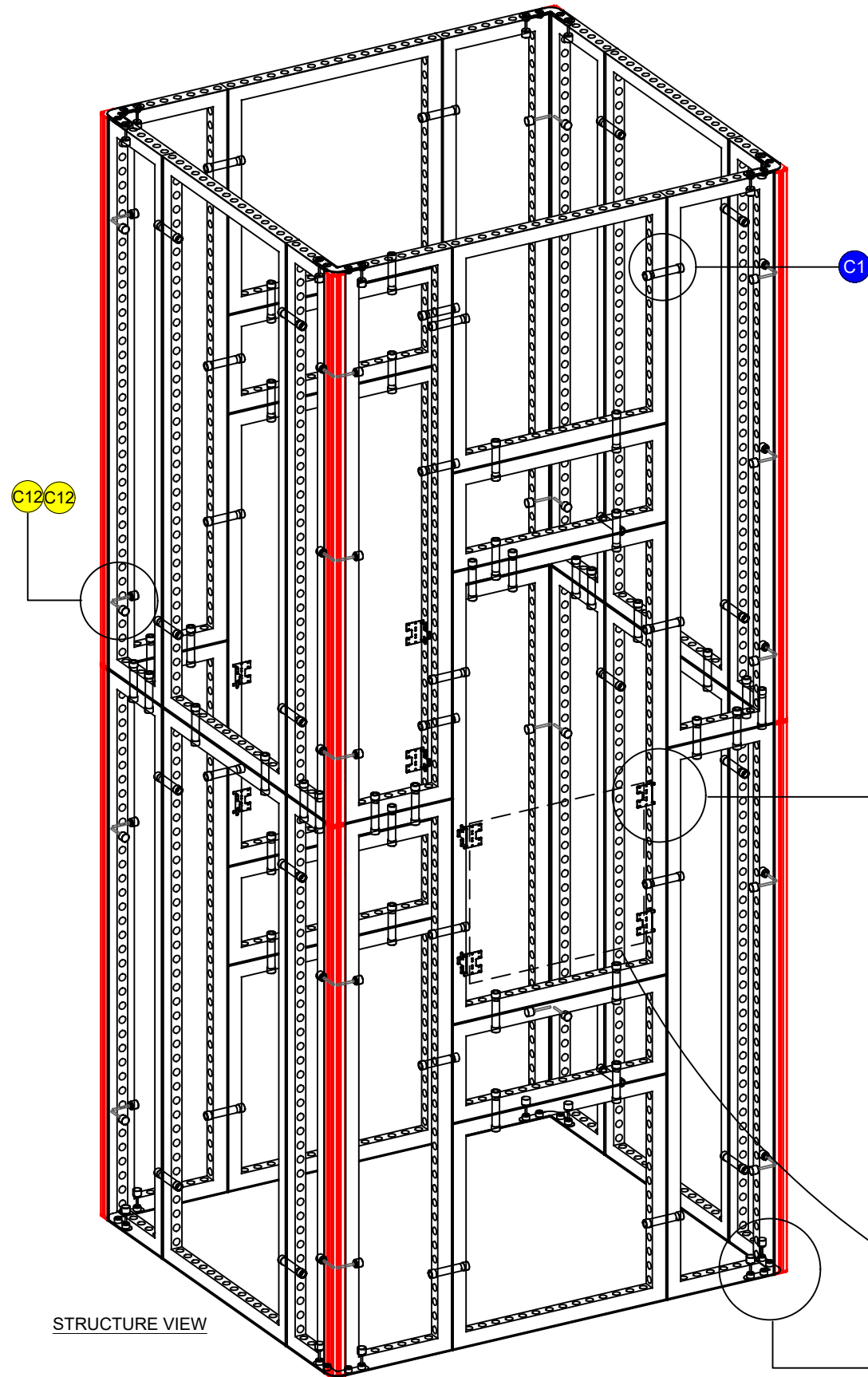
* 0 0 0 1 - 1 0 2 8 - 1 *



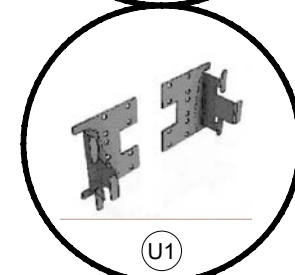
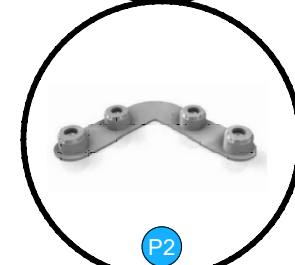
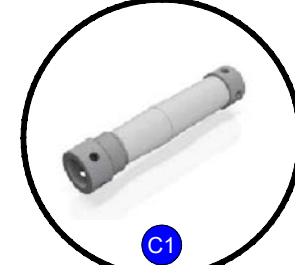
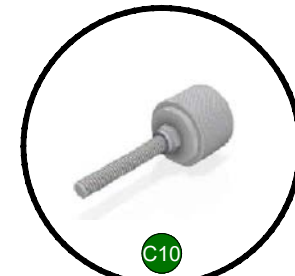
3D VIEW - 2

BOM

I.D.	Qty	Type	Size	Area (SqFt)	Part Number	Description	Material	Color	Notes	Low Inv.	Weight
	8	Accessories	See CNC			Fire Strobe Window Frame	Wood	Raw			
	16	FLEX Frame-Straight	12-3/16" x 95-3/16" (12.188" x 95.188")		60400014	STRAIGHT FRAME 05 HOLE X 39 HOLE	Aluminum	Silver	SF05390001	X	231.20
	16	FLEX Frame-Straight	17-1/16" x 39-1/16" (17.062" x 39.062")		60400020	Straight Frame 07 Hole x 16 Hole	Aluminum	Silver	SF07160001		120.80
	16	FLEX Frame-Straight	17-1/16" x 95-3/16" (17.062" x 95.188")		60400057	STRAIGHT FRAME 07 HOLE X 39 HOLE	Aluminum	Silver	SF07390001		241.60
	32	FLEX Frame-Straight	19-1/2" x 95-3/16" (19.5" x 95.2")		60400028	STRAIGHT FRAME 08 HOLE X 39 HOLE	Aluminum	Silver	SF08390001		493.76
	16	FLEX Frame-Straight	39-1/16" x 39-1/16" (39.062" x 39.062")		60400037	Straight Frame 16 Hole x 16 Hole	Aluminum	Silver	SF16160001		168.16
	8	FLEX Frame-Straight	39-1/16" x 78-1/8" (39.062" x 78.125")		60400042	STRAIGHT FRAME 16 HOLE X 32 HOLE	Aluminum	Silver	SF16320001		126.08
	16	FLEX Frame-Straight	39-1/16" x 95-3/16" (39.062" x 95.188")		60400043	STRAIGHT FRAME 16 HOLE X 39 HOLE	Aluminum	Silver	SF16390001		288.96
	64	FLEX Acc-Corner Post	2-7/16" x 2-7/16" x 5/16"		60440019	POST - SQUARE FABRIC CAP	Steel	Stainless	bMX 614 S04 SET TG		0.00
	32	FLEX Acc-Corner Post	2-7/16" x 2-7/16" x 94-9/16"		60440020	POST - SQUARE FABRIC W/ 4 THRD SIDES [2402MM]	Steel	Stainless	CO6142402S04		249.60
P2	32	FLEX Acc-Pin Plate	Standard		60440060	4 PIN 90DEG CONNECTOR BASE	Steel	Chrome	CO901280341C		37.76
U1	32	FLEX Part	Standard		60410031	GALVANIZED STEEL UNIVERSAL SUPPORT	Steel	Galvanized	AC9013703b62GALVA		14.72
C1	296	FLEX Part-Connector	6-3/4" x 1-5/16" x 1-5/16"		60440043	MANUAL CLAMP CONNECTOR	Aluminum	Silver	CO90120250132POM		109.52
C10	64	FLEX Part-Connector	Standard		60440047	MANUAL M8 PIN CONNECTOR	Aluminum	Silver	CO90120480066MKII		14.08
C12	168	FLEX Part-Connector	Standard		60440048	MANUAL M8 PIN CONNECTOR FOR LEDSKIN	Aluminum	Silver	CO90120480100MKII		40.32
A	8	FLEX Fabric Graphic	See Layout	0		Custom Cut Fabric for Fire Strobe	Default Fabric	Graphic			
B	8	FLEX Fabric Graphic	73-1/4" x 190-3/8" (73.25" x 190.375")	96.8		73-1/4" x 190-3/8" FLEX Fabric Graphic	Fabric	Graphic			
				Total Area:	96.80					Total Weight:	2136.56

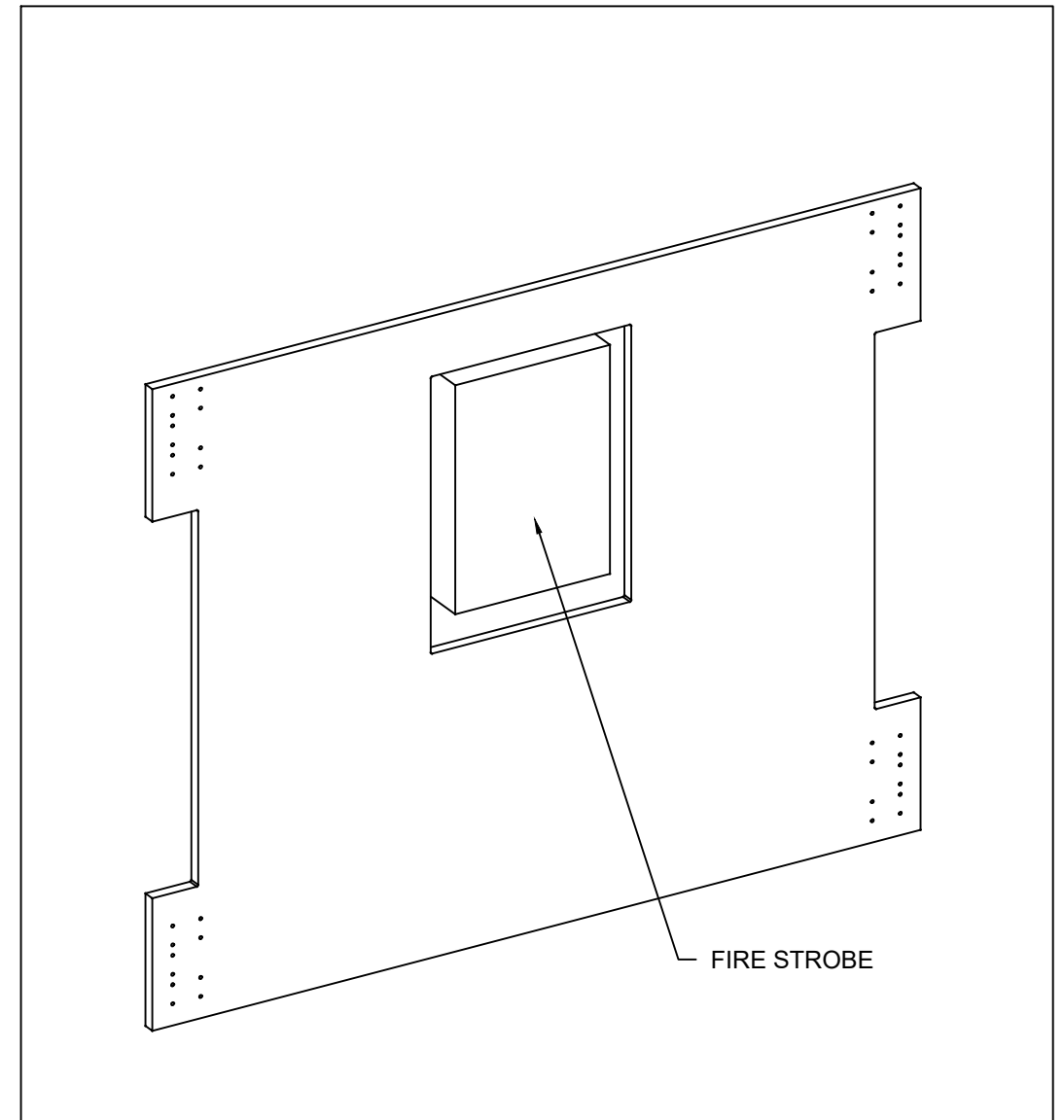


STRUCTURE VIEW



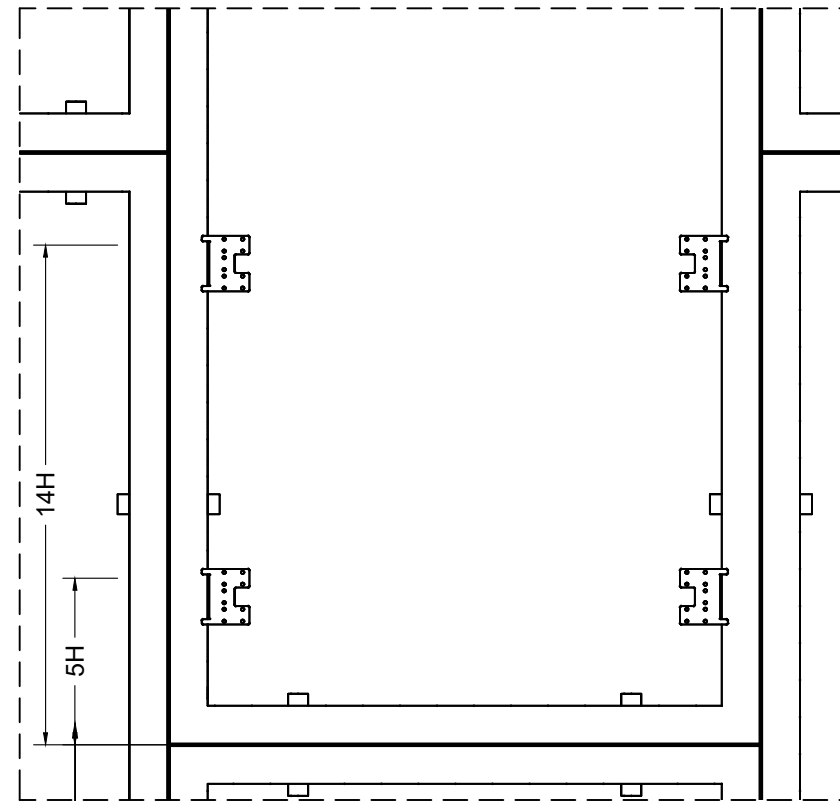
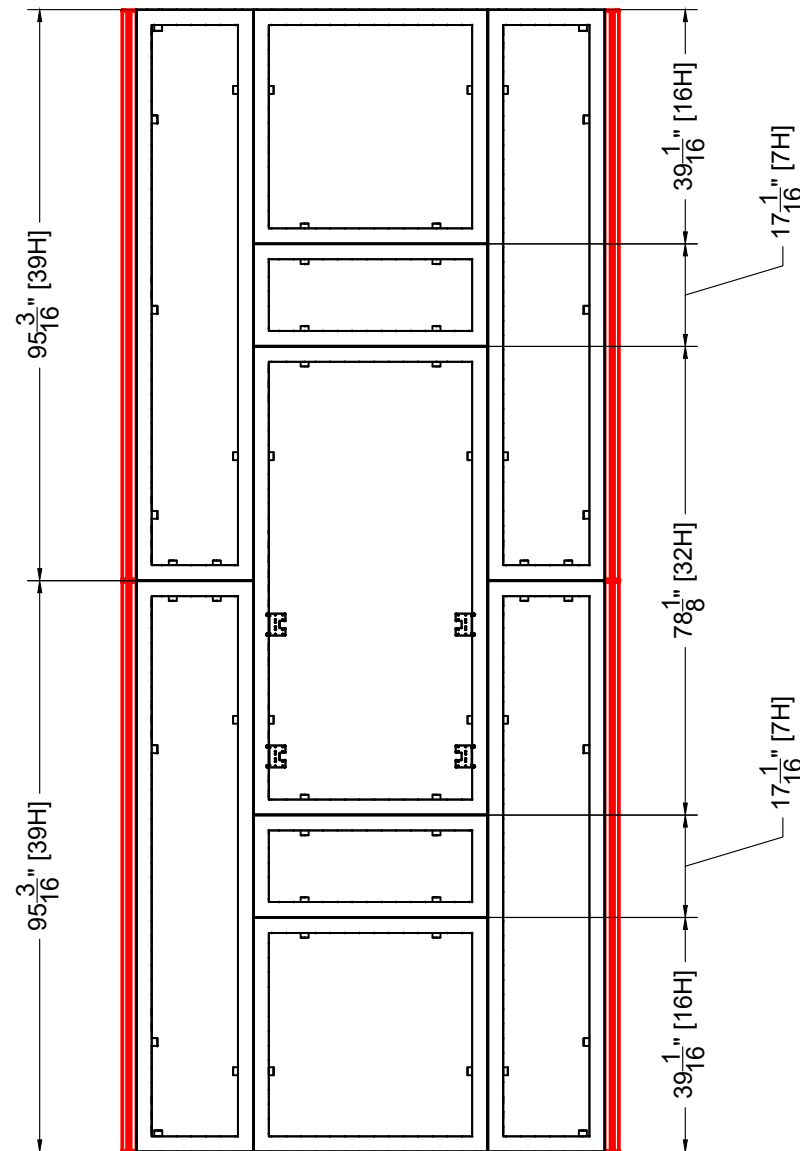
WOOD PLATE WITH HOLE. MAKE "X" SHAPED SLIT AND PULL FABRIC
BACK THROUGH HOLE AND STAPLE TO INSIDE OF WOOD PLATE.
THIS WILL CREATE A WINDOW TO ALLOW THE FIRE STROBE TO REMAIN
VISIBLE

LOCATED ON FRONT AND BACK OF EACH COLUMN

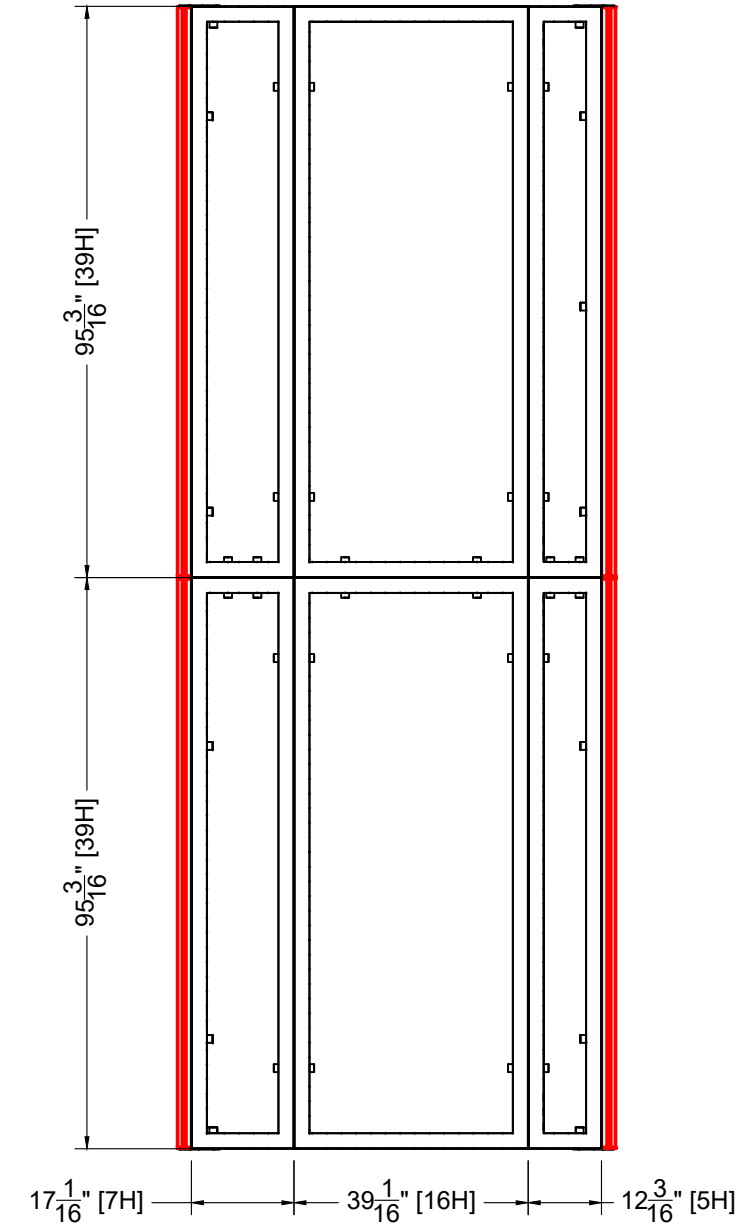


FIRE STROBE

19 $\frac{1}{2}$ " [8H] 39 $\frac{1}{16}$ " [16H] 19 $\frac{1}{2}$ " [8H]



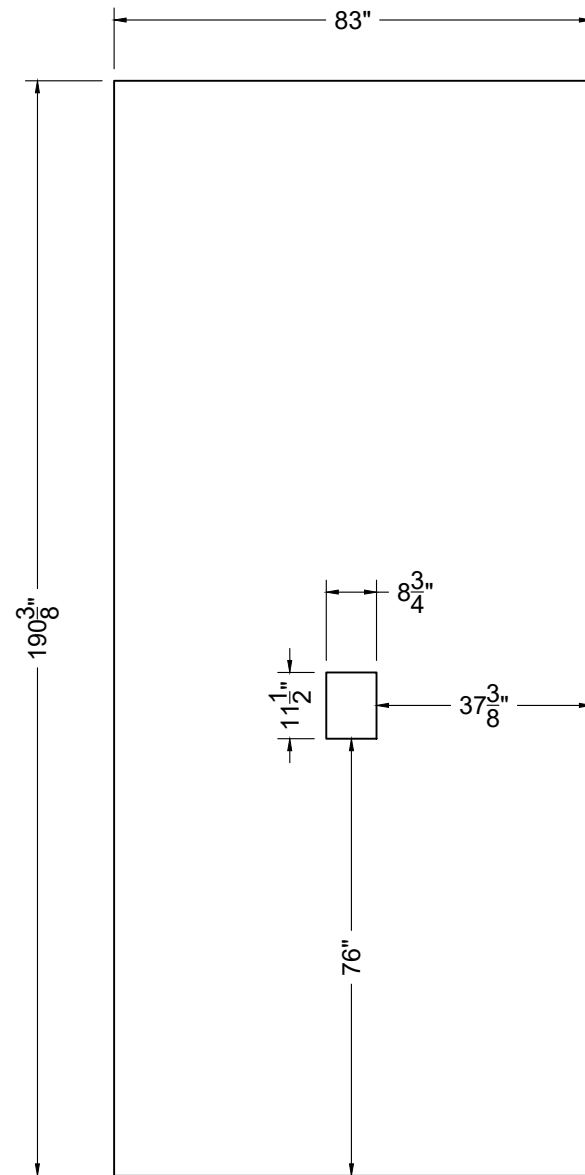
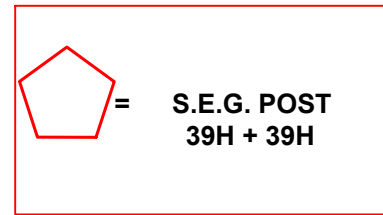
UNIVERSAL BRACKET
LOCATIONS FOR FIRE
STROBE WINDOW PLATE



SIDE VIEW

FRONT / BACK ELEVATION

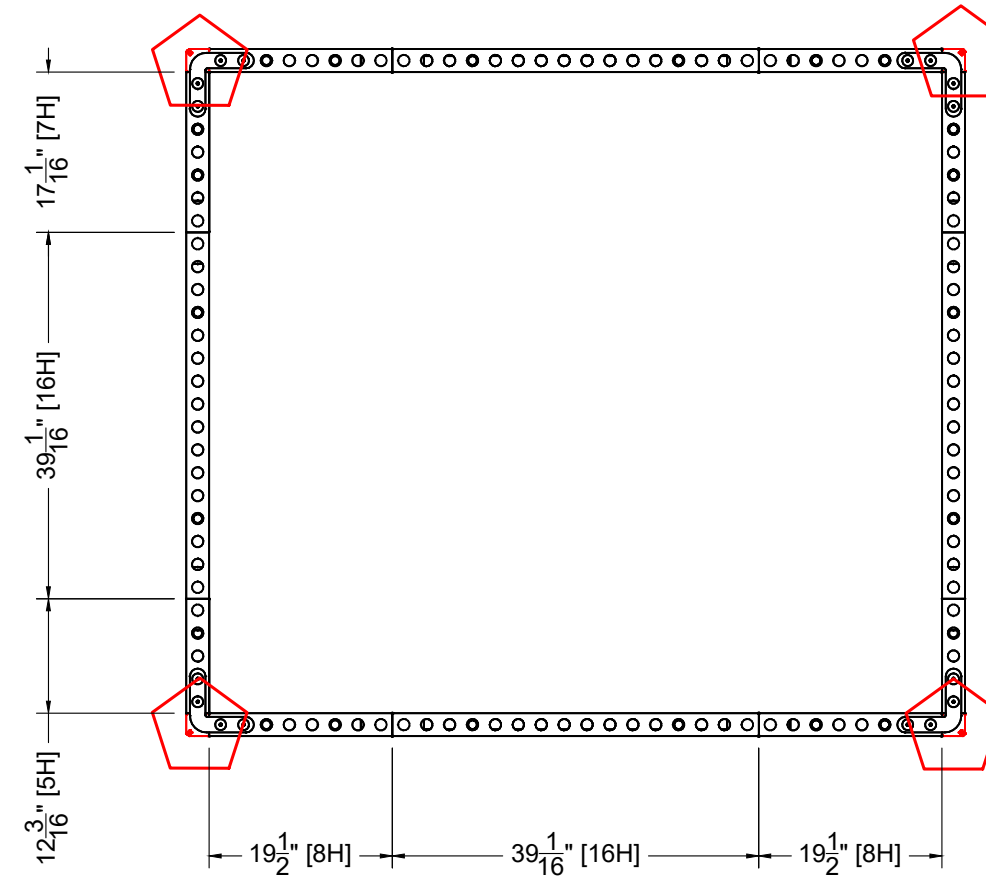
POST LEGEND



**DIMENSIONS GIVEN FOR
GRAPHIC LAYOUT
PURPOSES.**

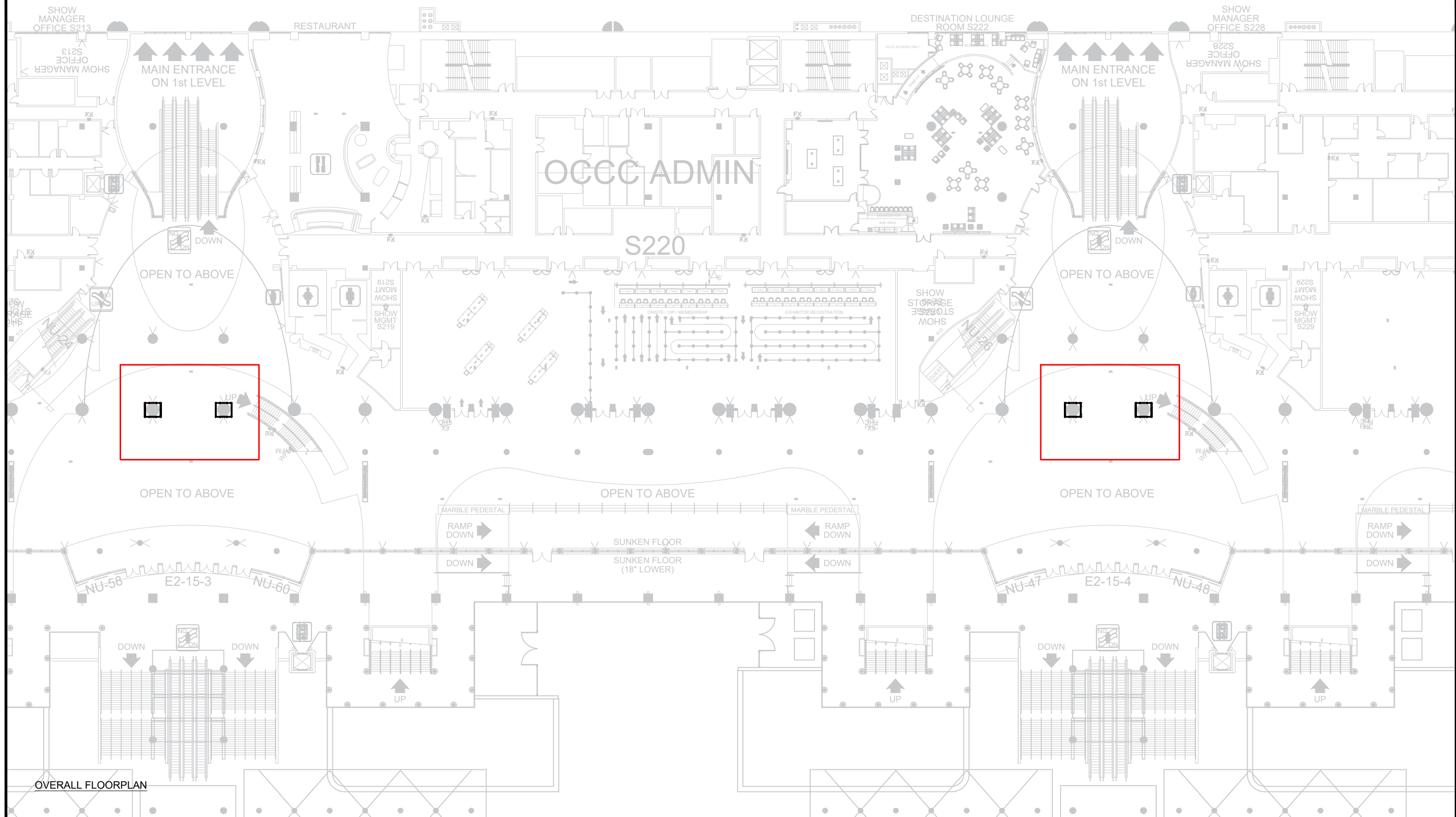
CUSTOM FABRIC DIMS

**RECOMMEND CUTTING
FABRIC AT SHOW SITE BY
MAKING A "X" SHAPED
INCISION AND STAPLING
FABRIC TO BACK OF WOOD
PLATE.**



PLAN VIEW

SOUTH COMPLEX - CONCOURSE LEVEL



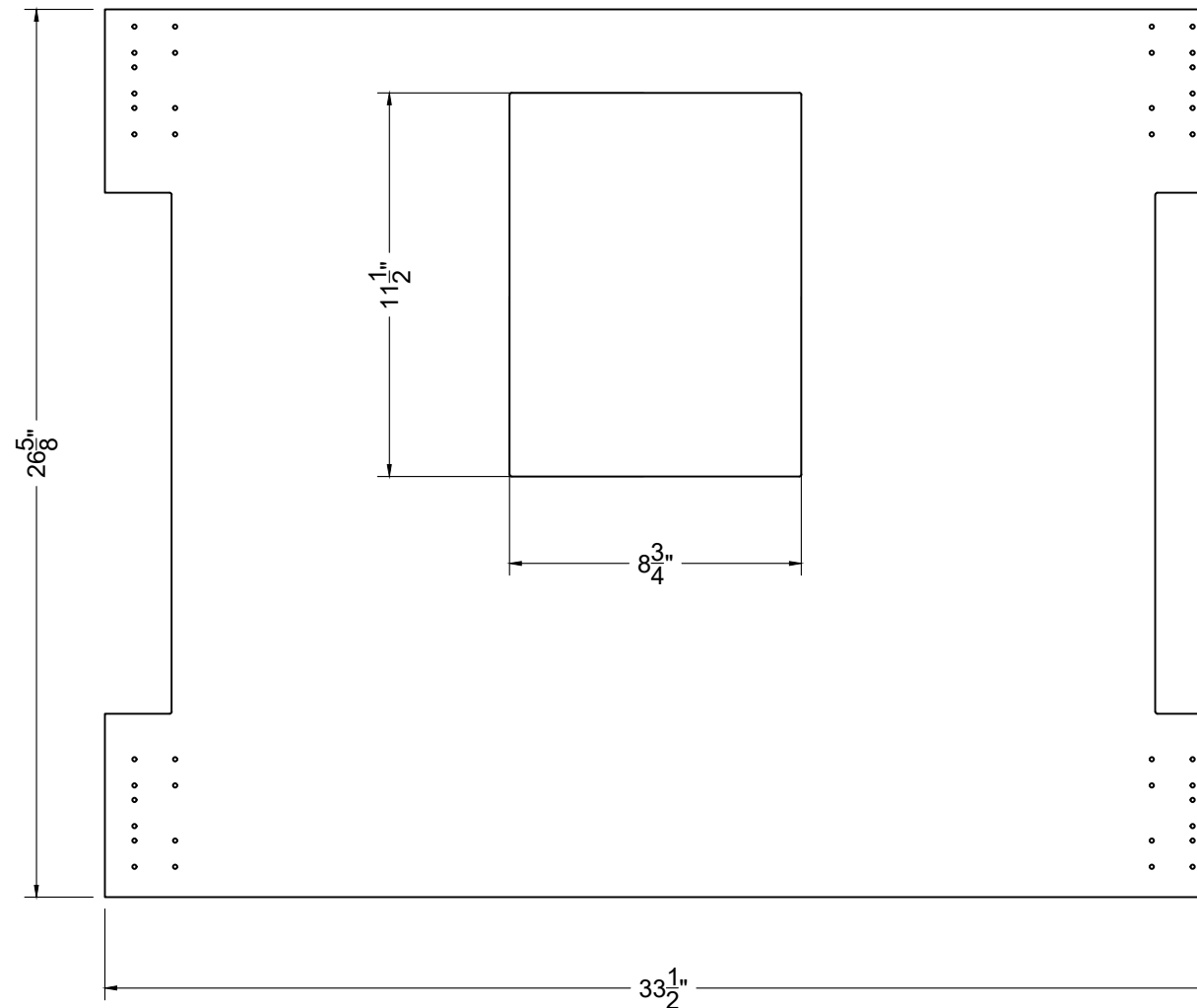
OVERALL FLOORPLAN

ORDERED BY:

ORDER DATE:

DUE DATE:

8



NAME: WOOD PLATE WITH FIRE STROBE WINDOW CUTOUT

MATERIAL: WOOD

NOTES:

QTY: 8

NEED TO CUT:

C:_Vault\Designs_Projects\G\Global Security Exchange\GSE2409\Event\CAD\NORTH HALL LVL 2 COLUMN WRAPS_CNC\GSE24 NORTH HALL LVL2 COLUMN WRAPS 11609502 CNC.dxf