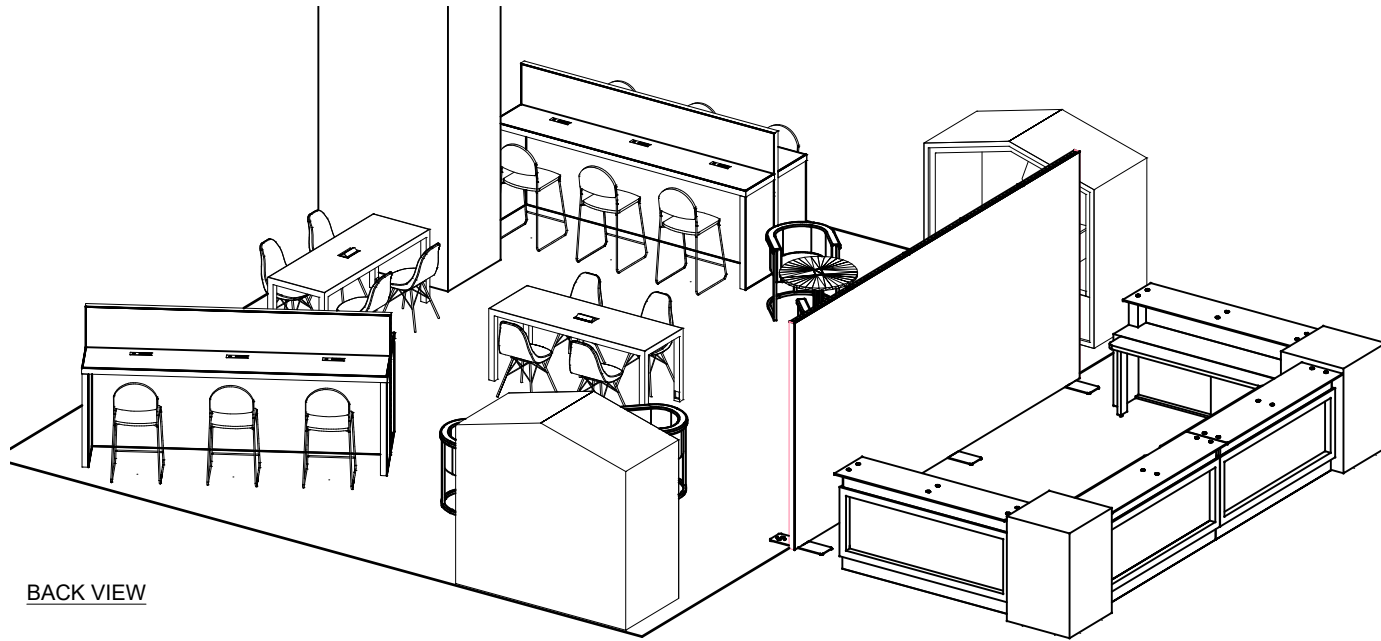


VENTURA POWERED TABLES

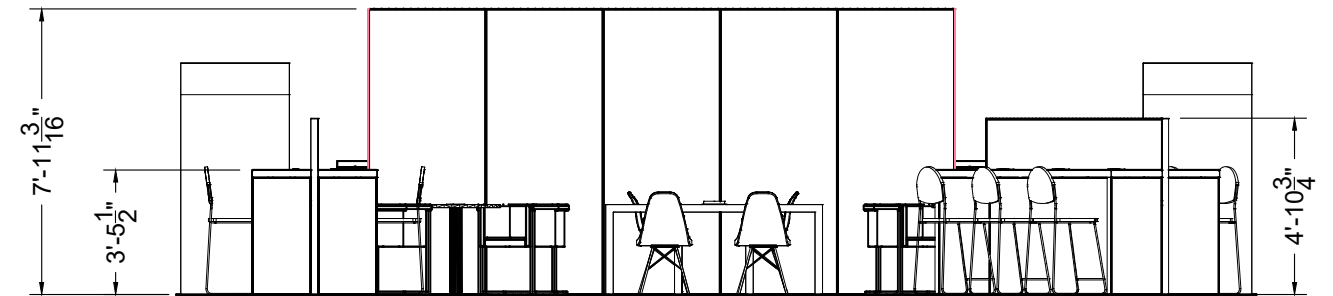
NOOK MEETING ROOMS



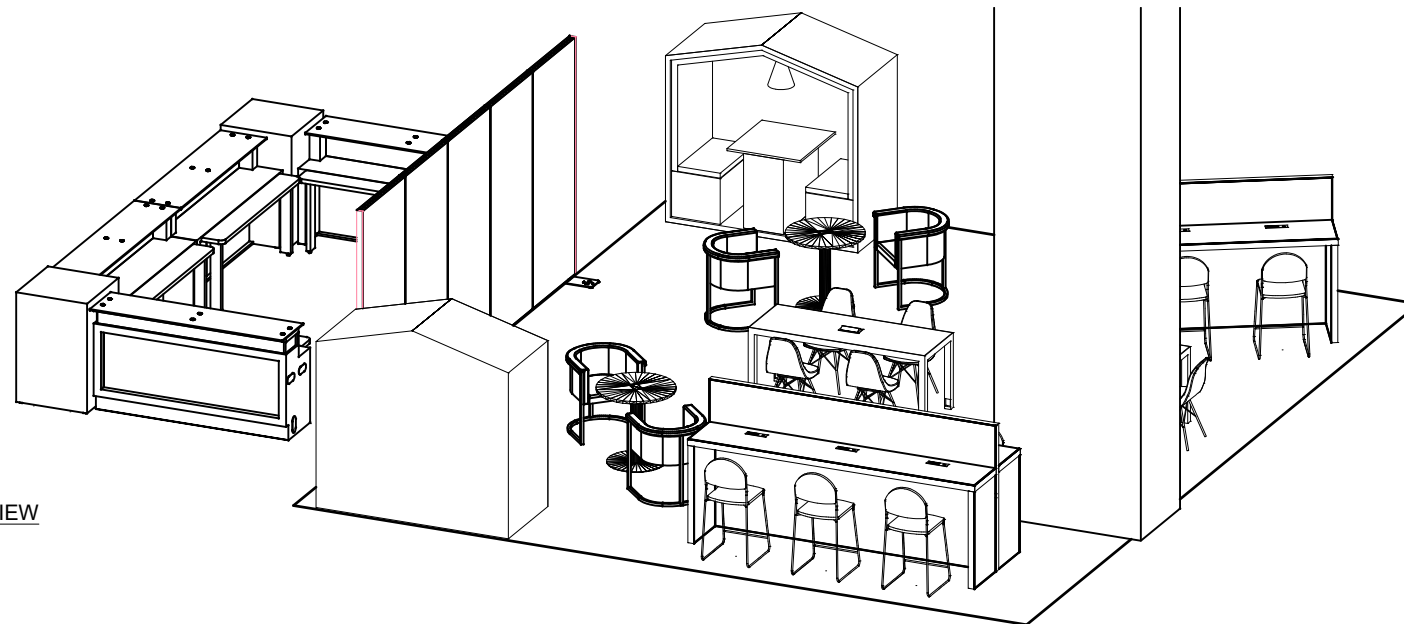
CHARGING BANKS



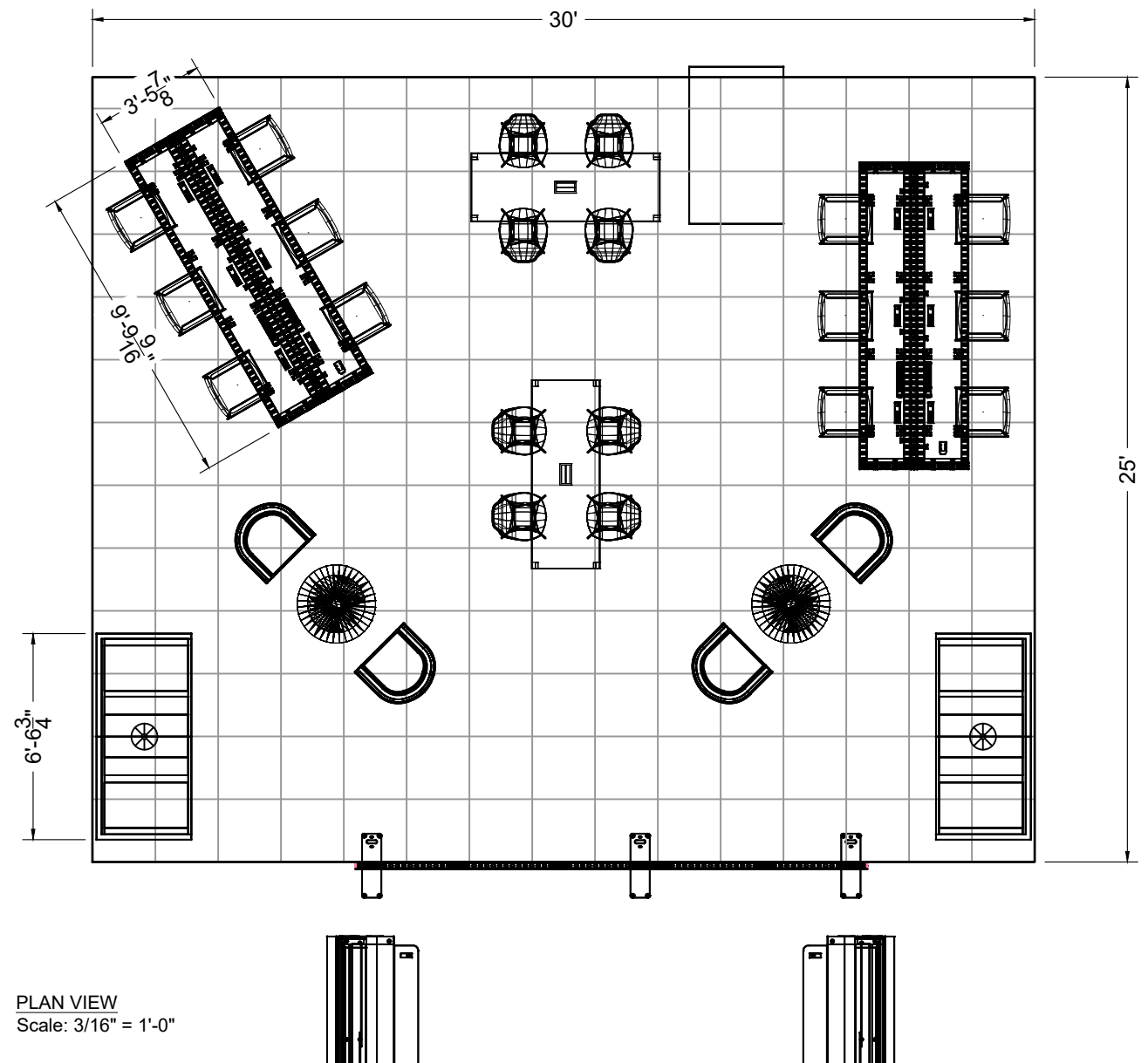
BACK VIEW



FRONT ELEVATION
Scale: 3/16" = 1'-0"



FRONT VIEW



PLAN VIEW
Scale: 3/16" = 1'-0"

Charging Lounge												
L.D.	Qty	Type	Size	Area (SqFt)	Part Number	Description	Material	Color	Notes	Low Inv.	Weight	
6		FLEX Frame-Straight	19-1/2" x 117-3/16" (19.5" x 117.2")		6040029	Straight Frame 08 Hole x 48 Hole	Aluminum	Silver	SF08480001	110.34		
8		FLEX Frame-Straight	19-1/2" x 38-1/16" (19.5" x 38.1")		6040025	Straight Frame 08 Hole x 18 Hole	Aluminum	Silver	SF08180001	63.00		
2		FLEX Frame-Straight	39-1/16" x 117-3/16" (39.0625" x 117.1875")		6040044	Straight Frame 16 Hole x 48 Hole	Aluminum	Silver	SF16480001	42.02		
C20	40	FLEX Acc-Pin Plate	Standard		6044005	Stainless steel 90° connector base	Steel	Stainless	CO901280222RNOX	35.60		
P1	8	FLEX Acc-Pin Plate	Standard		6044002	4 Pin, 180	Steel	Chrome	CO901280342C	8.84	X	
P3	4	FLEX Acc-Pin Plate	Standard		6044009	9 Pin, T	Steel	Chrome	CO901280342C	7.04		
C11	2	FLEX Part	109-3/16" x 14-1/8"		60410048	Plywood Mount	1/2" Plywood	Raw		6.00		
C12	2	FLEX Part	109-3/16" x 14-1/8"		60410048	Plywood Mount	1/2" Plywood	Raw		6.00		
U1	32	FLEX Chair	Standard		60410031	Galvanized steel universal support	Steel	Galvanized	AC9013703NE2GALVA	14.12		
C1	1	FLEX Part-Connector	Standard		60440043	Manual Clamp Connector	Aluminum	Silver		1.48		
C10	100	FLEX Part-Connector	Standard		60440047	Manual M8 Pin Connector	Aluminum	Silver	CO90120480066M01	22.00		
F1	4	Flex Insert	19-1/4" x 116-7/8" (19.25" x 116.875")	15.8	60160036	PVC INFILL FOR STRAIGHT FRAME 08 HOLE X 48 HOLE	PVC 3MM	White	w/ Female Velcro	1.20		
F2	4	Flex Insert	19-1/4" x 116-7/8" (19.25" x 116.875")	15.8	60160036	PVC INFILL FOR STRAIGHT FRAME 08 HOLE X 48 HOLE	PVC 3MM	White	w/ Female Velcro	1.20		
G	12	Flex Insert	19-1/4" x 38-3/4" (19.25" x 38.75")	5.2	60160031	PVC INFILL FOR STRAIGHT FRAME 08 HOLE X 18 HOLE	PVC 3MM	White	w/ Female Velcro	1.58		
G2	4	Flex Insert	19-1/4" x 38-3/4" (19.25" x 38.75")	5.2	60160031	PVC INFILL FOR STRAIGHT FRAME 08 HOLE X 18 HOLE	PVC 3MM	White	w/ Female Velcro	0.52		
H2	4	Flex Insert	116-7/8" x 38-3/4" (116.875" x 38.75")	31.5	60160022	Flex Insert 16x18 Hole	PVC 3MM	White	w/ Female Velcro	1.42		
A	8	Overlay Panel	19-9/16" x 2-7/16"	0.3	<<CUSTOM>>	Overlay Panel	PVC 3MM	White				
B	4	Overlay Panel	117-8/16" x 2-7/16"	2.0	<<CUSTOM>>	Overlay Panel	PVC 3MM	White				
C	8	Overlay Panel	2-7/16" x 38-1/16"	0.7	<<CUSTOM>>	Overlay Panel	PVC 3MM	White				
D	4	Overlay Panel	2-7/16" x 38-5/8"	1.0	<<CUSTOM>>	Overlay Panel	PVC 3MM	White				
E	2	Overlay Panel	2-7/16" x 117-8/16"	2.0	<<CUSTOM>>	Custom Overlay Panel	PVC 3MM	White				
1		Assembly	78-3/4" x 35" x 77"		<<CUSTOM>>	Nook Meeting Room	Wood	White				
12		UD Part	8-1/4" x 1-3/8" x 3-1/16"		<<CUSTOM>>	Outliner PVC 60x120-60	Standard	White				
4		UD Part	Standard		<<CUSTOM>>	Multi-strip	Standard	White				
2		UD Part	Standard		<<CUSTOM>>	Quad Box w/ Extension	Plastic	Black				
G1	4	Flex Graphic Insert	116-7/8" x 19-1/4" (116.875" x 19.25")	15.8	<<CUSTOM>>	Flex Insert - Graphic (60x18 Hole)	PVC 3MM	Graphic				
8		Accent Chair	18-1/2" x 22" x 34"		<<CUSTOM>>	Chelsea Chair - Walnut - Black Base	Laminate	Wilsonart Planked California W	w/ Female Velcro			
8		Accent Chair	27" x 25" x 31"		<<CUSTOM>>	Lena Chair	Leather	Green				
12		Barstool	22" x 18" x 46"		<<CUSTOM>>	Black Diamond Stool	Fabric	Gray				
2		Table	30" x 30" x 29"		<<CUSTOM>>	30" Cafe Table, Powered	Plastic	White				
2		Table	72-1/4" x 28-1/4" x 30"		<<CUSTOM>>	Ventura Communal Cafe Table, White, Powered	Laminate	White				
Total Area										84.70	Total Weight	322.78