

# HIMSS 25

March 3-6 | Las Vegas



## Package *Includes:*

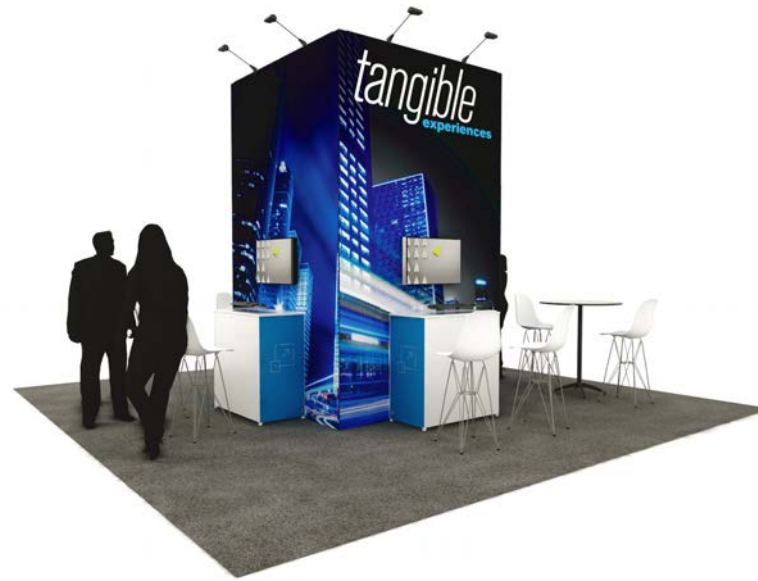
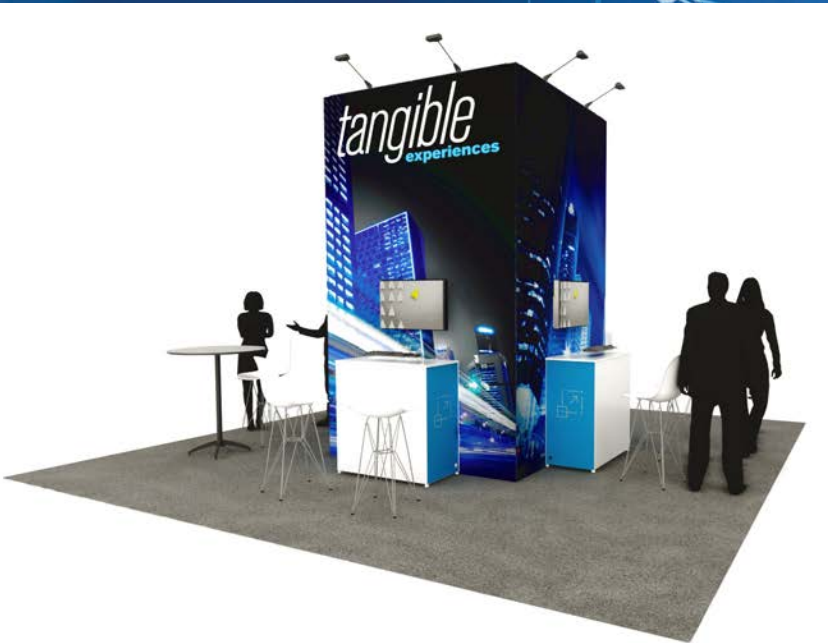
- Structure shown in image above
- Backwall with (1) locking cabinet, (2) kiosks with locking cabinets, lighting  
\* graphics designed by exhibiting company
- Installation & dismantle labor
- Electrical services for monitors & lighting
- Shared hard Internet lines @ monitor
- (5) Stools & (1) highboy table
- (2) 32" monitor & (1) 60" monitor, HDMI cable, mouse & keyboard included  
\* company to provide laptop to drive content on monitor)
- (3) days of vacuuming
- Carpet

**20' x 20'**  
**OPTION 1**

**\*No Substitutions**

# HIMSS 25

March 3-6 | Las Vegas



## Package *Includes:*

- Structure shown in image above
- Tower with storage, (3) counters, lighting  
\* graphics designed by exhibiting company
- Installation & dismantle labor
- Electrical services for monitors & Lighting
- Shared hard Internet lines @ monitor
- (10) Stools & (2) highboy tables
- (3) 32" monitor, HDMI cable, mouse & keyboard included  
\* company to provide laptop to drive content on monitor)
- (3) days of vacuuming
- Carpet

**20' x 20'**  
**OPTION 2**

**\*No Substitutions**

### 20 x 20 Turnkey Option 1

Highlighted yellow panels = Exhibitor Branded

Panels not highlighted = white

Counter top = white

Panel A (x2) = 122.062" x 134.25"

Panel B (door) = 35.688" x 92.062"

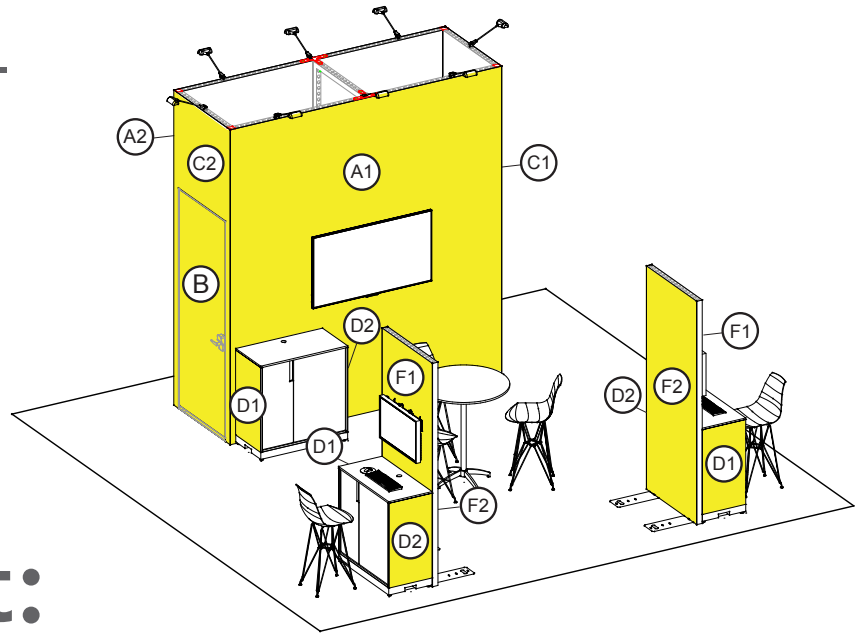
Panel C (x2) = 43.938" x 134.25"

Panel D (x6) = 19.5" x 36.125"

Panel F (x4) = 39.062" x 95.188"

How to prepare print ready files:

[Graphic Guidelines](#)



## How to submit:

### 1) Properly name file:

CompanyName\_Booth300

EXAMPLE: **Spycare\_Booth310**

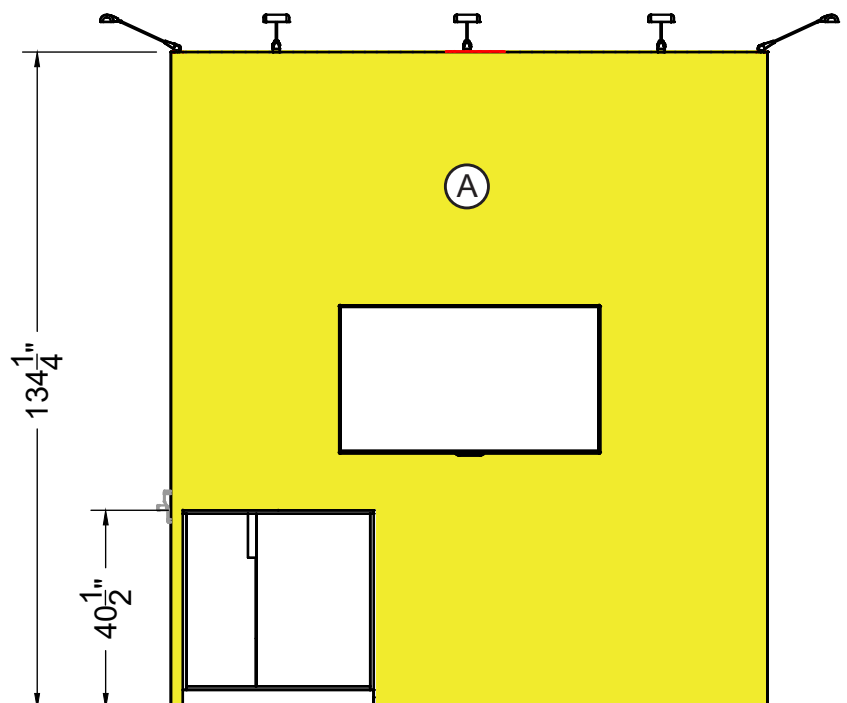
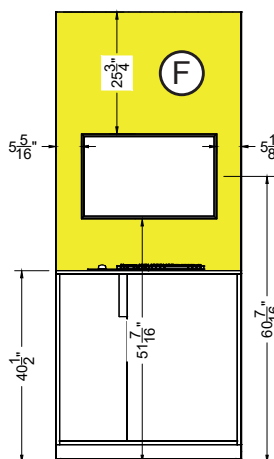
### 2) To submit Graphic File [CLICK HERE](#)

**DUE January 6<sup>th</sup>**

Late fees will apply for submissions received after January 6th. Fees will be billed to you by Freeman.

HIMSS will send (1) graphic proof for review.

Exhibitor will have 48 hours to review before automatically going into production



### 20 x 20 Turnkey Option 2

Highlighted yellow panels = Exhibitor Branded

Panels not highlighted = white

Counter top = white

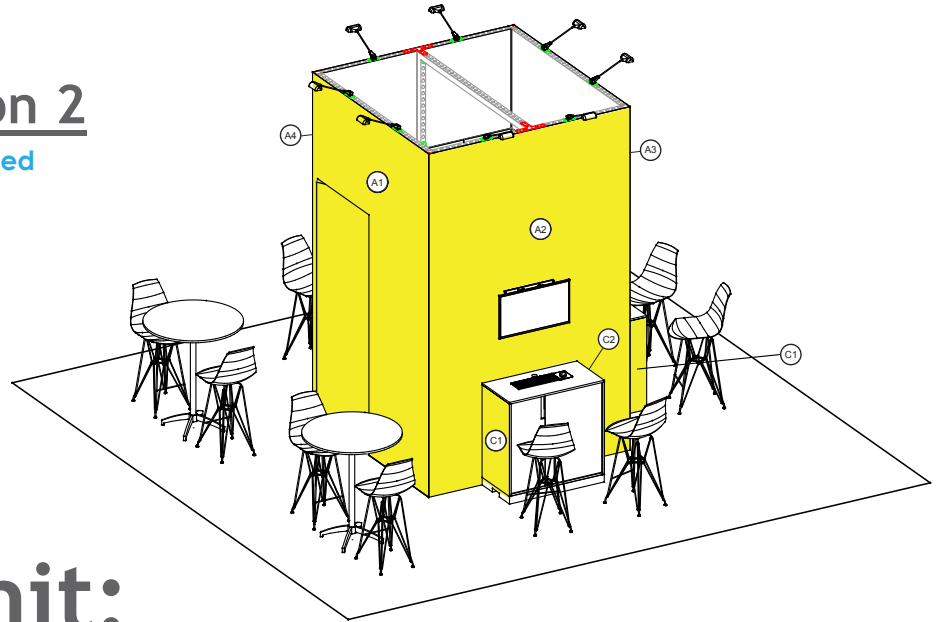
Panel A (x4) = 83" x 134.25"

\*A1 Panel includes door graphics

Panel C (x6) = 19.5" x 36.125"

How to prepare print ready files:

[Graphic Guidelines](#)



## How to submit:

### 1) Properly name file:

CompanyName\_Booth300

EXAMPLE: **Spycare\_Booth310**

### 2) To submit Graphic File [CLICK HERE](#)

**DUE January 6<sup>th</sup>**

Late fees will apply for submissions received after January 6th. Fees will be billed to you by Freeman.

HIMSS will send (1) graphic proof for review.

Exhibitor will have 48 hours to review before automatically going into production

