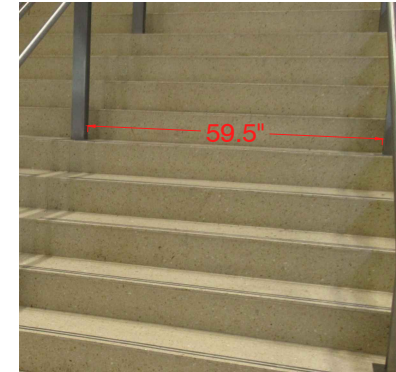


WEST E1 & E2 LOBBY

STAIR GRAPHICS

L2 - ESC12



HALF STAIRS = 1 LANDING = 9 STAIRS

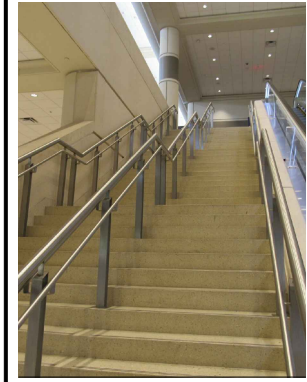
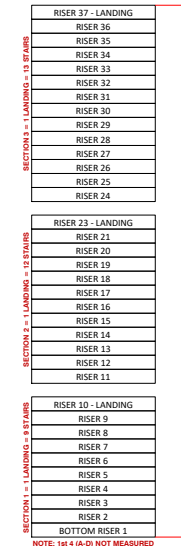
RISERS 1 - 10 LEFT-SIDE LOOKING STRAIGHT AT STAIRS	
59.5"	
LANDING RISER	R10
RISER - 6.75" TOTAL HEIGHT	R9
RISER - 6.75" TOTAL HEIGHT	R8
RISER - 6.75" TOTAL HEIGHT	R7
RISER - 6.75" TOTAL HEIGHT	R6
RISER - 6.75" TOTAL HEIGHT	R5
RISER - 6.75" TOTAL HEIGHT	R4
RISER - 6.75" TOTAL HEIGHT	R3
RISER - 6.75" TOTAL HEIGHT	R2
BOTTOM RISER - 6.75" TOTAL HEIGHT	R1

HALF STAIRS = 1 LANDING = 9 STAIRS

RISERS 1 - 10 RIGHT-SIDE LOOKING STRAIGHT AT STAIRS	
59.5"	
LANDING RISER	R10
RISER - 6.75" TOTAL HEIGHT	R9
RISER - 6.75" TOTAL HEIGHT	R8
RISER - 6.75" TOTAL HEIGHT	R7
RISER - 6.75" TOTAL HEIGHT	R6
RISER - 6.75" TOTAL HEIGHT	R5
RISER - 6.75" TOTAL HEIGHT	R4
RISER - 6.75" TOTAL HEIGHT	R3
RISER - 6.75" TOTAL HEIGHT	R2
BOTTOM RISER - 6.75" TOTAL HEIGHT	R1

TOP TREAD = .75" TERRAZO - .125" GROUT LINE
GRAPHIC HEIGHT IS RISER ONLY

TOP TREAD = .75" TERRAZO - .125" GROUT LINE
GRAPHIC HEIGHT IS RISER ONLY



F R E E M A N

Facility:
ORANGE COUNTY CONVENTION CENTER
Hall / Level:
HALLS A4-B1/ WEST LEVEL 2
City & State:
ORLANDO, FLORIDA

Scale: CUSTOM
Started: 10/4/2019
Started By: GLORIA HURTADO, SE
Branch: ORLANDO

NOT TO SCALE

DISCLAIMER

EVERY EFFORT HAS BEEN MADE TO ENSURE THE ACCURACY OF ALL INFORMATION CONTAINED ON THIS FLOORPLAN. HOWEVER NO WARRANTIES, EITHER EXPRESSED OR IMPLIED ARE MADE WITH RESPECT TO THIS FLOORPLAN. IF THE LOCATION OF BUILDING COLUMNS, UTILITIES OR OTHER ARCHITECTURAL COMPONENTS OF THE FACILITY IS A CONSIDERATION IN THE CONSTRUCTION OR USAGE OF AN EXHIBIT, IT IS THE SOLE RESPONSIBILITY OF THE EXHIBITOR TO PHYSICALLY INSPECT THE FACILITY TO VERIFY ALL DIMENSIONS AND LOCATIONS.

©COPYRIGHT 2007, FREEMAN CO.
ALL RIGHTS RESERVED.

