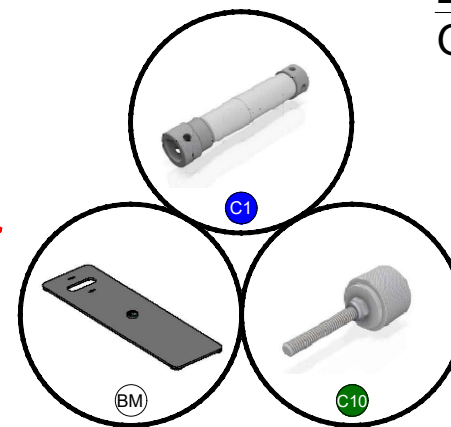
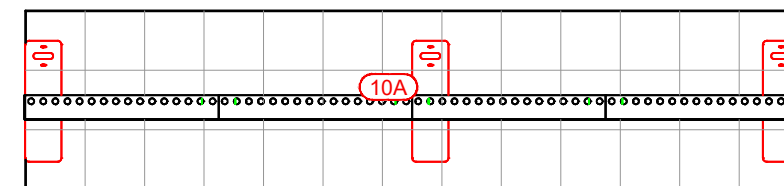
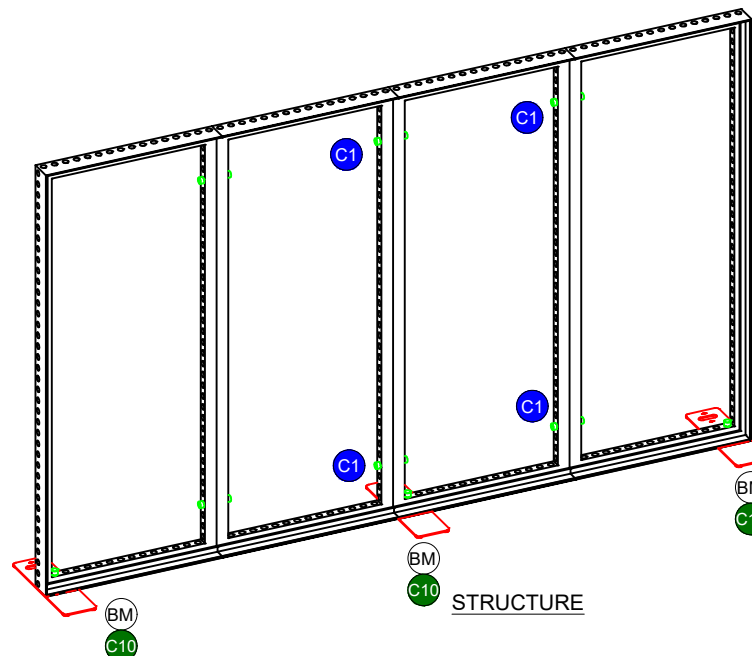
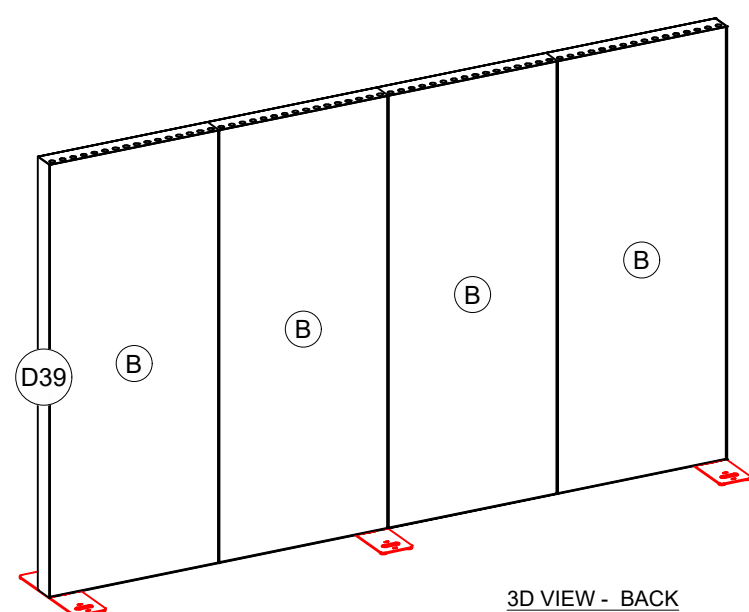
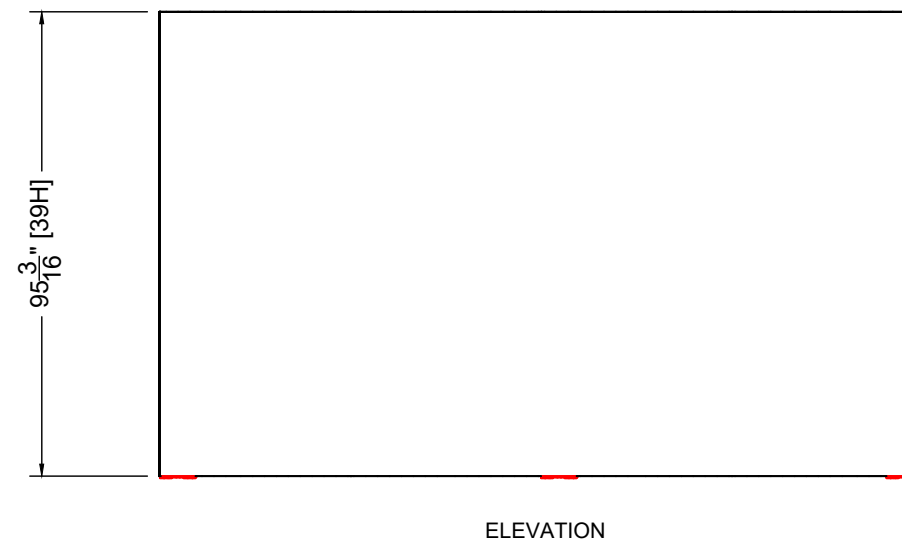
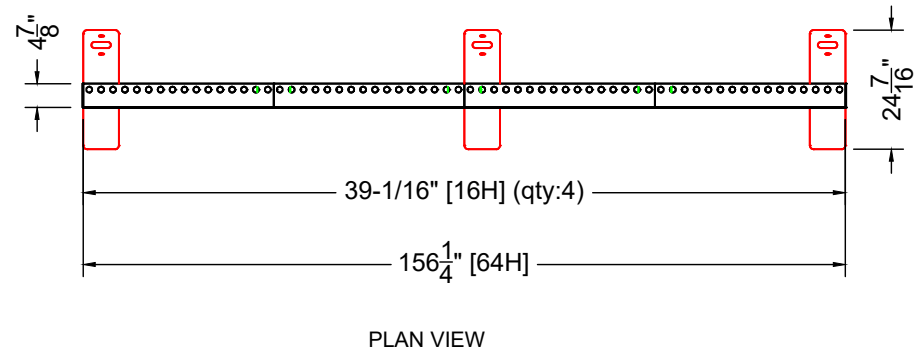
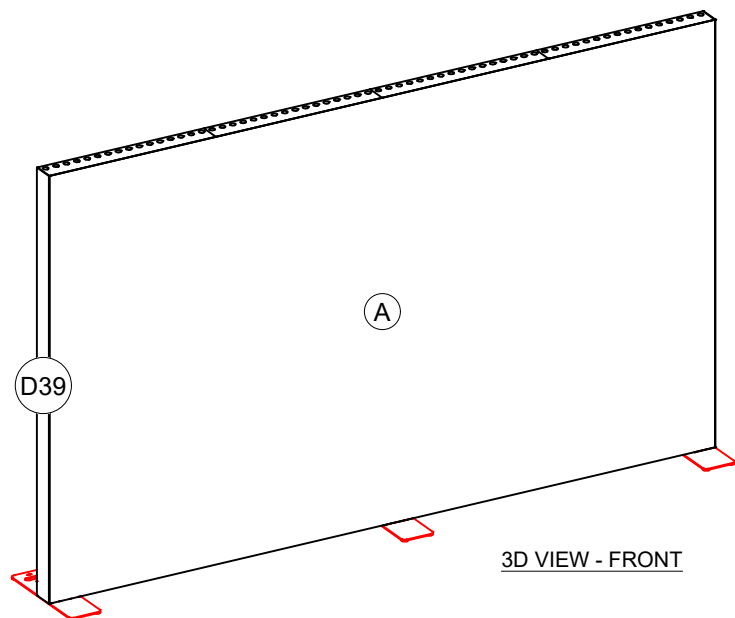


Pull List

I.D.	Qty	Type	Size	Area (SqFt)	Part Number	Description	Material	Color	Notes	Low Inv.	Weight
	2	FLEX Frame-Straight	39-1/16" x 95-3/16" (39.062" x 95.188")		60530002	Single End Frame 8H Light Box	Aluminum	Silver	Electrical Connections at Center		96.56
	2	FLEX Frame-Straight	39-1/16" x 95-3/16" (39.062" x 95.188")		60530003	Single Middle Frame 8H Light Box	Aluminum	Silver	Electrical Connections at Center		80.24
BM	3	FLEX Acc-Base Plate	7-5/16" x 24-7/16" x 7/16"		60440082	BASE PLATE MEDIUM	Steel	Galvanized	CO90120480066MKII		37.68
D39	2	FLEX PVC Cover	4-7/8" x 95-3/16"		<<CUSTOM>>	DOUBLE WIDE PVC END CAP (39 HOLE)	PVC 3MM	White			
C1	6	FLEX Part-Connector	6-3/4" x 1-5/16" x 1-5/16"		60440043	MANUAL CLAMP CONNECTOR	Aluminum	Silver	CO90120250132POM		2.22
C10	3	FLEX Part-Connector	1-5/16" x 1-5/16" x 3-9/16"		60440047	MANUAL M8 PIN CONNECTOR	Aluminum	Silver	CO90120480066MKII		0.66
A	1	FLEX Fabric Graphic	156-1/4" x 95-3/16" (156.25" x 95.188")	103.3	<<CUSTOM>>	156-1/4" x 95-3/16" FABRIC - GRAPHIC	Fabric	Graphic			
B	4	Flex Insert	38-3/4" x 94-15/16" (38.75" x 94.938")	25.5	60160051	PVC INFILL FOR STRAIGHT FRAME 16 HOLE X 39 HOLE	PVC 3MM	White	w/ Female Velcro		50.24
Total Area:				128.80						Total Weight:	267.60



UTILITIES LEGEND

QTY	DESCRIPTION
--	(5A) - 120V, 5 Amp
--	(10A) - 120V, 10 Amp
--	(20A) - 120V, 20 Amp
--	∇ - INTERNET LINE
--	(MS) - MULTISTRIP
--	(QB) - QUADBOX