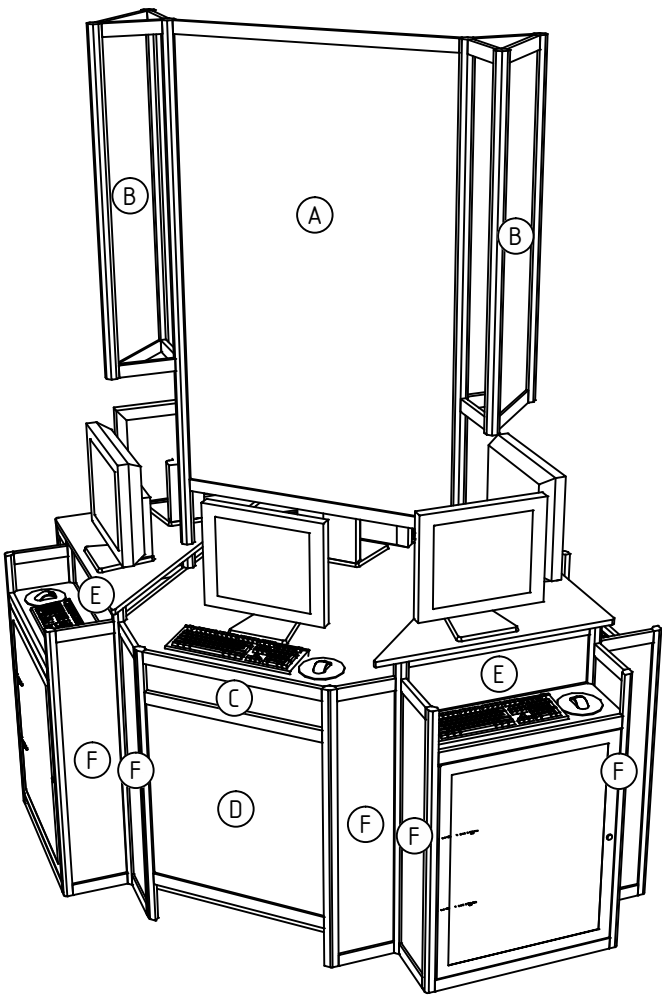
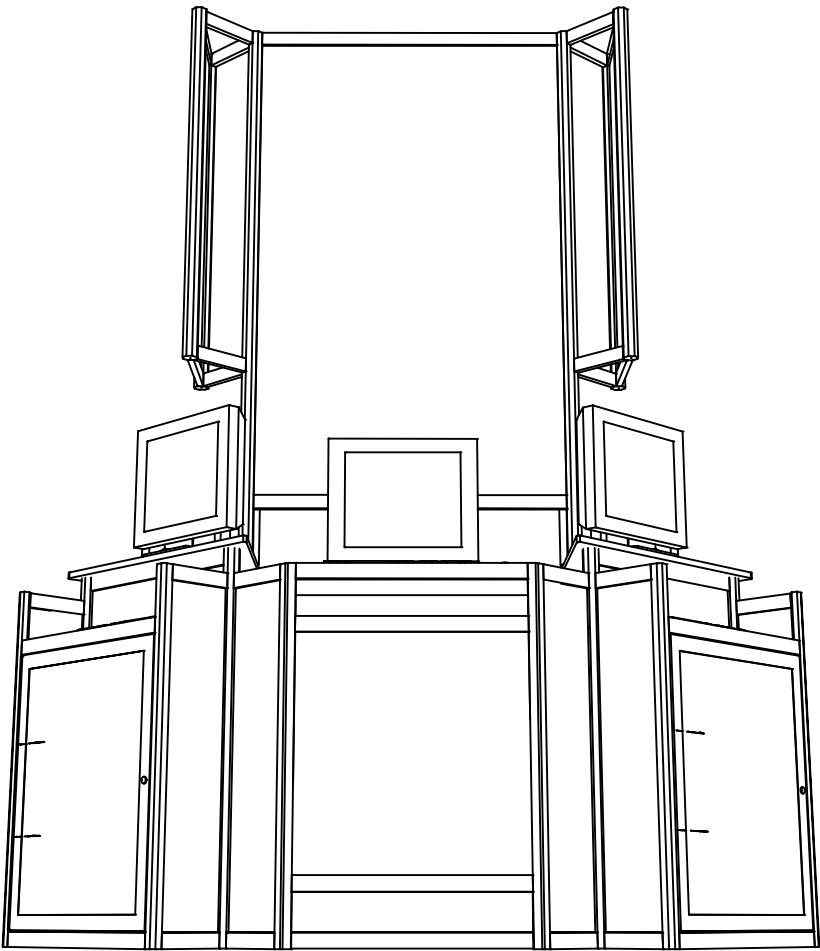


OPTION 3



FRONT ISOMETRIC



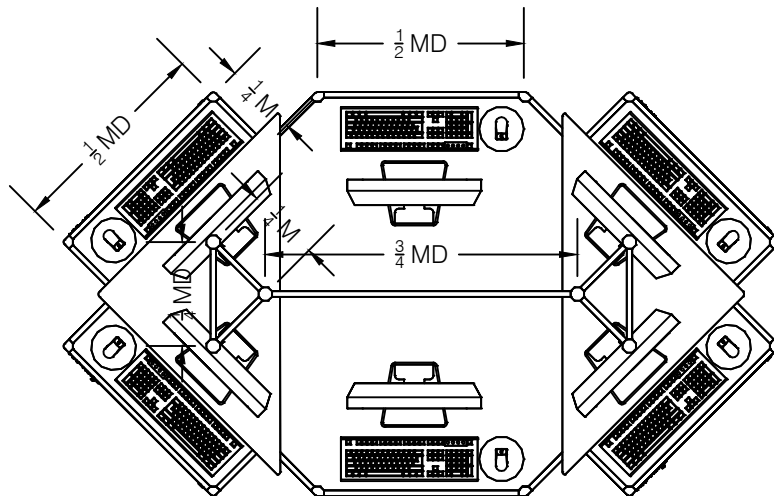
REAR ISOMETRIC

Customer / Structure: Internet Station	Booth Number / Location:	Sales Contact: Kim Richardson	Location: New Orleans	Job Number: 312670
Show Name: Am. Academy of Allergy, Asthma & Immunology	Show Dates: 02/22/2015-02/23/2014	Designer: Audrey Liptak	Location: Dallas	Passport Line Item: 190319
Show Location: George R. Brown Convention Center		Creation Date: 7/30/2014	Revision Date: 8/8/2014	Producing City: Houston
File Name: P:/Dallas/Branch/SCRD/_DESIGN/2015/AAAAI 2015 (312670)/Expo				

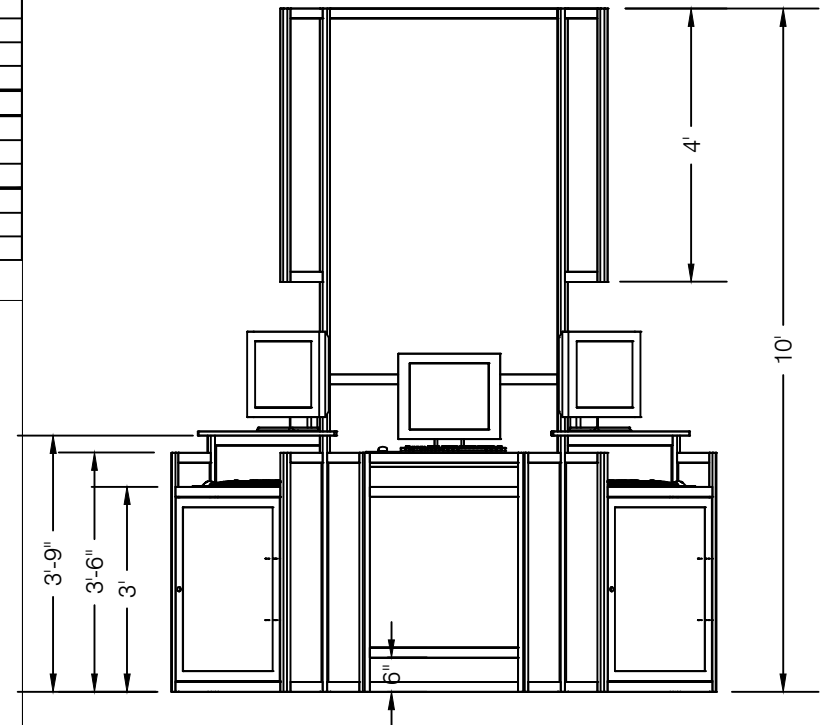
The text, graphics, designs, logos, data compilations and information ("Content") contained in this Proposal are owned or controlled by Freeman and are protected by United States and international copyright and trade secret laws. Modification or reproduction of the Content for any purpose is strictly prohibited.

OPTION 3

AAAAI15 Internet Station L190319 Opt 3										
I.D.	Qty	Type	Size	Area (SqFt)	Part Number	Description	Material	Color	Notes	
	6	P80	45"			3'-9"	Aluminum	Silver		
	4	P80	48"			4'-0"	Aluminum	Silver		
	2	P80	120"			10'-0"	Aluminum	Silver		
	8	P31	42"			3'-6" (42")	Aluminum	Silver		
	4	P40	42"			3'-6" (42")	Aluminum	Silver		
	32	H45	8"			1/4M	Aluminum	Silver		
	4	H45	12-1/8"			1/4MD	Aluminum	Silver		
	8	H45	17-7/8"			1/2M	Aluminum	Silver		
	26	H45	26"			1/2MD	Aluminum	Silver		
	6	H45	39-15/16"			3/4MD	Aluminum	Silver		
B	2	Graphic Panel	12-5/8" x 45"	3.95		1/4MD x 4'-0" (H45/H45)	PVC	TBD		
C	2	Graphic Panel	40-7/16" x 38-1/4"	10.74		3/4MD x 3'-5-1/4" (H45/H45)	PVC	TBD		
D	2	Graphic Panel	26-1/2" x 27"	4.97		1/2MD x 2'-6" (H45/H45)	PVC	TBD		
E	4	Graphic Panel	26-1/2" x 7-3/4"	1.43		1/2MD x 10-3/4" (H45/H45)	PVC	TBD		
F	12	Graphic Panel	8-1/2" x 39"	2.30		1/4M x 3'-6" (H45/H45)	PVC	TBD		
A	1	Graphic Panel	40-7/16" x 63"	17.69		3/4MD x 5'-6" (H45/H45)	PVC	TBD		
	4	Hinged Cab. Door	25-13/16" x 32-1/4"	5.8		1/2MD x 36" (H45/H45)	PVC	White		
	1	Counter Top	See Detail			Custom Standard Inset	Wood	White		
	4	Counter Top	1/2MD x 1/4M			Inset Rectangle	Wood	White		
	2	Counter Top	1/2MD x 1/2MD x 1M			Overlay Isocoles Triangle	Wood	White		
	8	Misc Part	Standard			MIS Hinge	Standard	Standard		
	6	Electronics	18"			18"-LCD Screen	Standard	Standard		
	6	Electronics	Keyboard & Mouse			Keyboard & Mouse-Equipment	Standard	Standard		



PLAN



FRONT

Customer / Structure:
Internet Station
Show Name:
Am. Academy of Allergy, Asthma & Immunology
Show Location:
George R. Brown Convention Center

Booth Number / Location:
Show Dates:
02/22/2015-02/23/2014

Sales Contact:
Kim Richardson
Designer:
Audrey Liptak
Creation Date:
7/30/2014

Location:
New Orleans
Location:
Dallas
Revision Date:
8/8/2014

Job Number:
312670
Passport Line Item:
190319
Producing City:
Houston

File Name:
P:/Dallas/Branch/SCRD/_DESIGN/2015/AAAAI 2015 (312670)/Expo