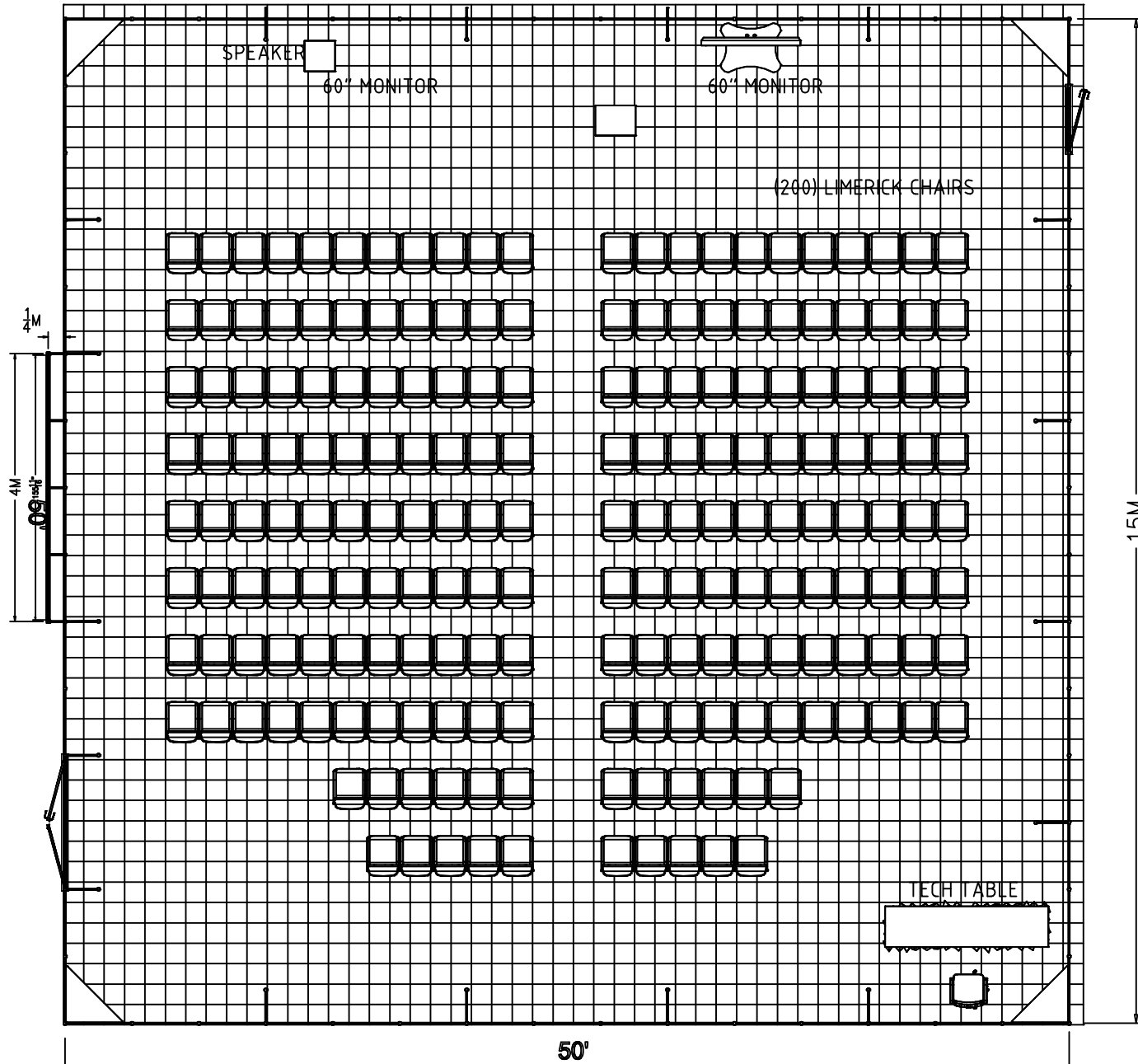


12" ELECTRICAL GRID



PLAN

F R E E M A N

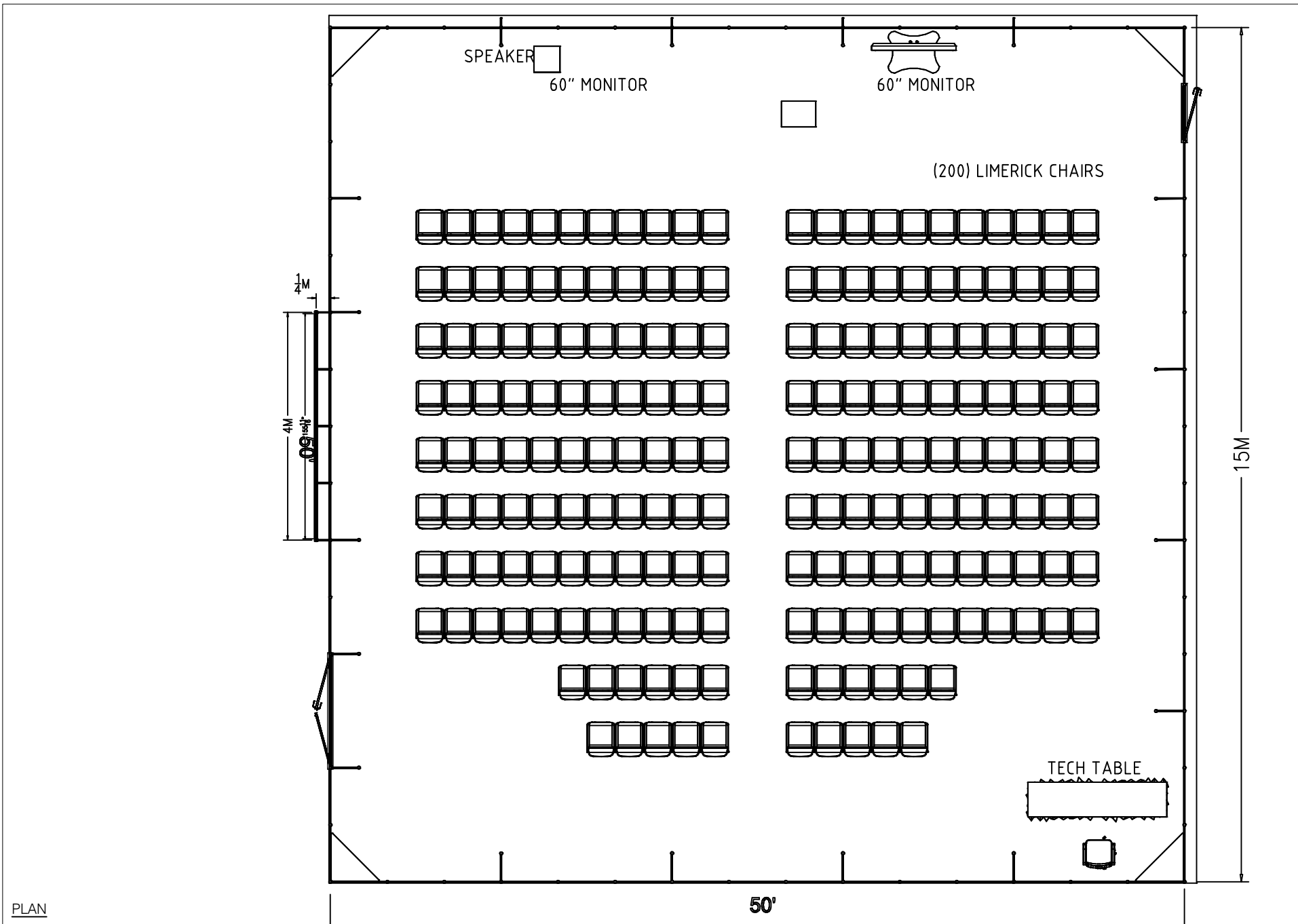
PROJECT THEATER
BOOTH # MGMT

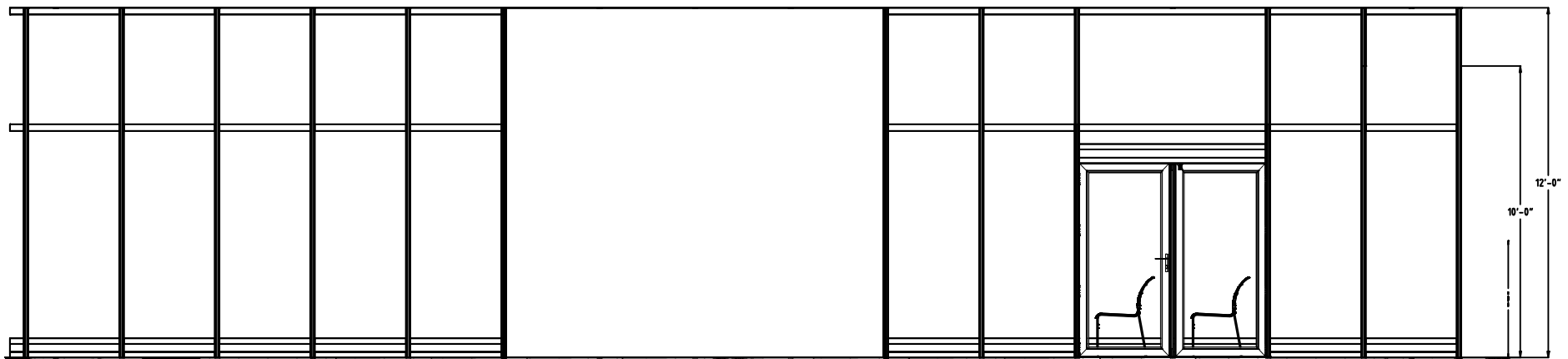
SHOW NAME Soc of Interventional Radiology
SHOW DATE 3/18/2018 through 3/21/2018
SHOW LOCATION Los Angeles Convention Center

SALES CONTACT Janet Dyehouse
JOB NUMBER 451726
LINE ITEM NUMBER 4637549

CREATED BY Alvin Mendoza | Mark SRENTATION DATE 4/16/2018
REVISED 4/16/2018
PRODUCING BRANCH Chicago

FILE NAME P:/Chicago/Branch/NCRDC/_Out of Region/2018/SIR (451726)/Exposition/AutoCad/SIR18 Theater 4637549 DES.dwg





FRONT

F R E E M A N

PROJECT THEATER
BOOTH # MGMT

SHOW NAME Soc of Interventional Radiology
SHOW DATE 3/18/2018 through 3/21/2018
SHOW LOCATION Los Angeles Convention Center

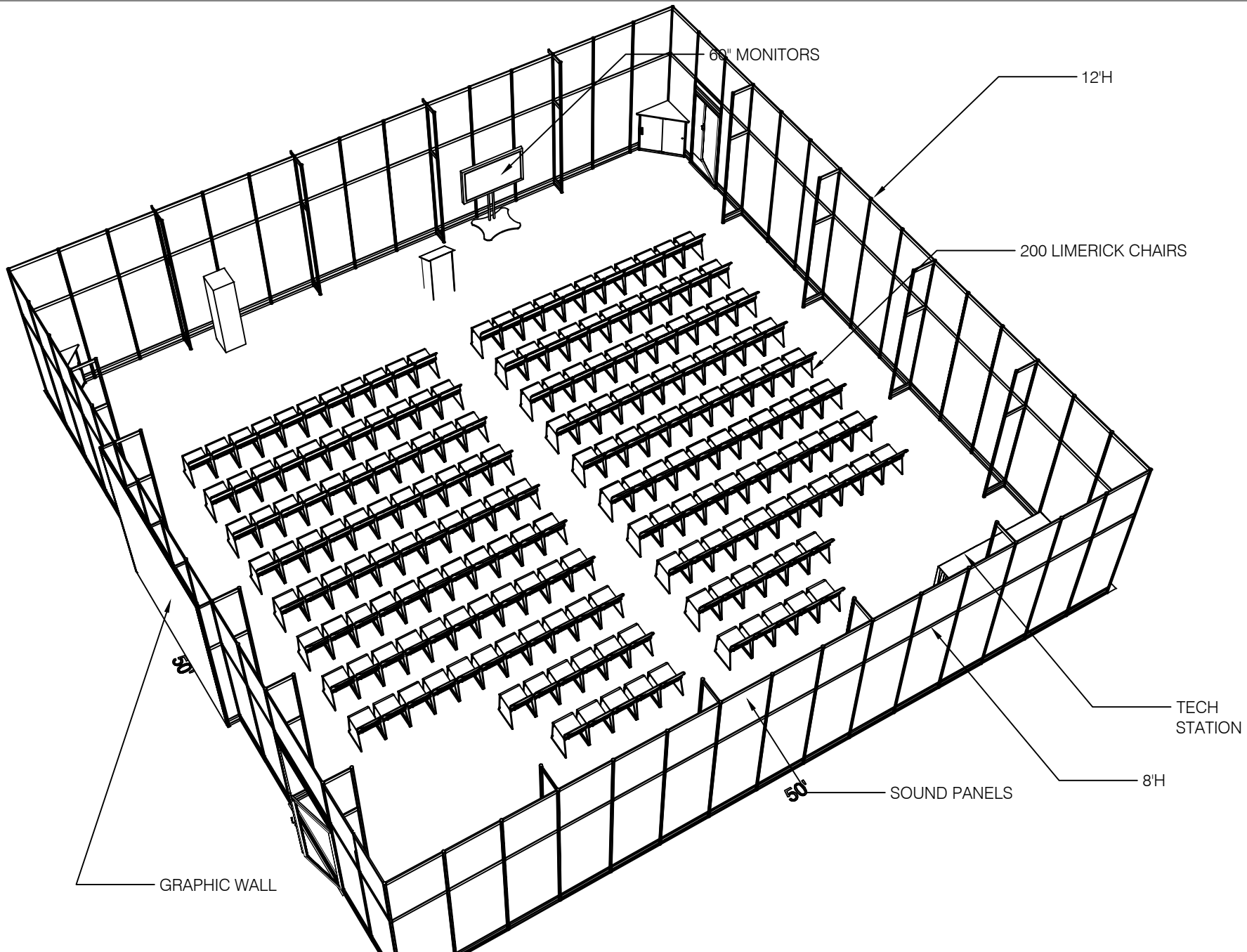
SALES CONTACT Janet Dyehouse
JOB NUMBER 451726
LINE ITEM NUMBER 4637549

CREATED BY Alvin Mendoza | Mark S. FREEMAN DATE 4/16/2018
REVISION DATE 4/16/2018
PRODUCING BRANCH Chicago

FILE NAME P:/Chicago/Branch/NCRDC/_Out of Region/2018/SIR (451726)/Exposition/AutoCad/SIR18 Theater 4637549 DES.dwg

The text, graphics, designs, logos, data compilations and information ("Content") contained in this Proposal are owned or controlled by Freeman and are protected by United States and international copyright and trade secret laws. Modification or reproduction of the Content for any purpose is strictly prohibited.

Front



LABELS

F R E E M A N

PROJECT THEATER
BOOTH # MGMT

SHOW NAME Soc of Interventional Radiology
SHOW DATE 3/18/2018 through 3/21/2018
SHOW LOCATION Los Angeles Convention Center

SALES CONTACT Janet Dyehouse
JOB NUMBER 451726
LINE ITEM NUMBER 4637549

CREATED BY Alvin Mendoza | Mark SRENTION DATE 4/16/2018
REVISED 4/16/2018
PRODUCING BRANCH Chicago

FILE NAME P:/Chicago/Branch/NCRDC/_Out of Region/2018/SIR (451726)/Exposition/AutoCad/SIR18 Theater 4637549 DES.dwg

The text, graphics, designs, logos, data compilations and information ("Content") contained in this Proposal are owned or controlled by Freeman and are protected by United States and international copyright and trade secret laws. Modification or reproduction of the Content for any purpose is strictly prohibited.

Labels

*Provided for preliminary estimating purposes only. NOT for production. May not be 100% accurate.

THEATER									
I.D.	Qty	Type	Size	Area (SqFt)	Part Number	Description	Material	Color	Notes
	1	P80	120"			10'-0"	Aluminum	Silver	
	75	P80	144"			12'-0"	Aluminum	Silver	
5	3	P50	140-3/8"			11'-8-3/8"	Aluminum	Silver	
	12	P31	42"			3'-6" (42")	Aluminum	Silver	
8	2	H45	8"			1/4M	Aluminum	Silver	
11	3	H45	8"			1/4M	Aluminum	Silver	
	16	H45	27-3/4"			3/4M	Aluminum	Silver	
	8	H45	39-15/16"			3/4MD	Aluminum	Silver	
12	2	H70	8"			1/4M	Aluminum	Silver	
16	3	H70	8"			1/4M	Aluminum	Silver	
	34	H70	17-7/8"			1/2M	Aluminum	Silver	
	116	H70	37-9/16"			1M	Aluminum	Silver	
	2	H70	76-15/16"			2M	Aluminum	Silver	
17	2	H200	8"			1/4M	Aluminum	Silver	
20	1	H200	76-15/16"			2M	Aluminum	Silver	
22	3	H200	8"			1/4M	Aluminum	Silver	
	17	H200	17-7/8"			1/2M	Aluminum	Silver	
	57	H200	37-9/16"			1M	Aluminum	Silver	
B	2	Wall Panel	8-1/2" x 45-5/8"	2.7		1/4M x 4'-1-3/8" (H45/H70)	PVC 3MM	Grey	
C	2	Wall Panel	8-1/2" x 87-5/8"	5.2		1/4M x 8'-1-3/8" (H70/H200)	PVC 3MM	Grey	
	8	Wall Panel	28-1/4" x 39"	7.6		3/4M x 3'-6" (H45/H45)	PVC 3MM	White	
G	1	Acrylic Panel	77-7/16" x 7-3/8"	4.0		2M x 11-7/8" (H70/H70)	Plexi	Smoke	
	58	Sound Panel	38-1/8" x 46-1/4"	12.2		1M x 4'-2-3/4" (H70/H70)	Impac	Grey	
	1	Sound Panel	77-7/16" x 46-1/4"	24.9		2M x 4'-2-3/4" (H70/H70)	Impac	Grey	
	57	Sound Panel	38-1/8" x 86-1/4"	22.8		1M x 8'-0" (H70/H200)	Impac	Grey	
	4	Std. Cab. Door	21" x 38-1/4"	5.6		3/4MD x 42" (H45/H45)	PVC	White	
	4	Std. Cab. Door	21" x 38-1/4"	5.6		3/4MD x 42" (H45/H45)	PVC 6MM	White	
	1	Door	1M	NA		1M Standard MIS Door	Standard	Standard	
	4	Counter Top	See Detail			Custom Standard Overlay	Wood	White	
	8	Door Track	39-15/16"			HDT 3/4MD	Standard	Standard	
	8	Door Track	37-1/2"			VDT 42" (H45/H45)	Standard	Standard	
	1	Electronics	61"			61"-Plasma Screen	Standard	Standard	
	1	Furniture Essentials	26" x 20" x 38"		N71046	Gray Gasliff Chair - with Arms	Fabric	Gray	
	198	Furniture Essentials	18" x 17-3/4" x 33"		C210108	Limerick Chair	Plastic	Gray	
	1	Drape Tables	96" x 24" x 30"			8x24x30	Standard	Standard	
N	2	Plex_Panel	31-7/8" x 73"			Plexi Door Filler Panel	Plexi	Smoke	
33	2	UD Part	0" x 0" x 144"	0		PS2	Aluminum	Silver	
34	2	UD Part	x x 144"	0		Snap Banner Frame	Aluminum	Silver	
35	2	UD Part	155-11/16" x x 0"	0		Snap Banner Frame	Aluminum	Silver	
Q	1	UD Part	155-3/16" x x 143-1/2"	0		Snap Banner Fabric	Fabric	White	

PARTS LIST