

PERSPECTIVE

Please note that the structure and/or panel size is subject to change during final production detail.

FREEMAN

PROJECT Career Center Lounge
BOOTH # 835

SHOW NAME Endocrine Soc
SHOW DATE 3/23/2019 through 3/26/2019
SHOW LOCATION Morial Convention Center

SALES CONTACT Julie Wheelless
JOB NUMBER 443026
LINE ITEM NUMBER 4831585

CREATED BY Kristina Kim

CREATION DATE 7/12/2018

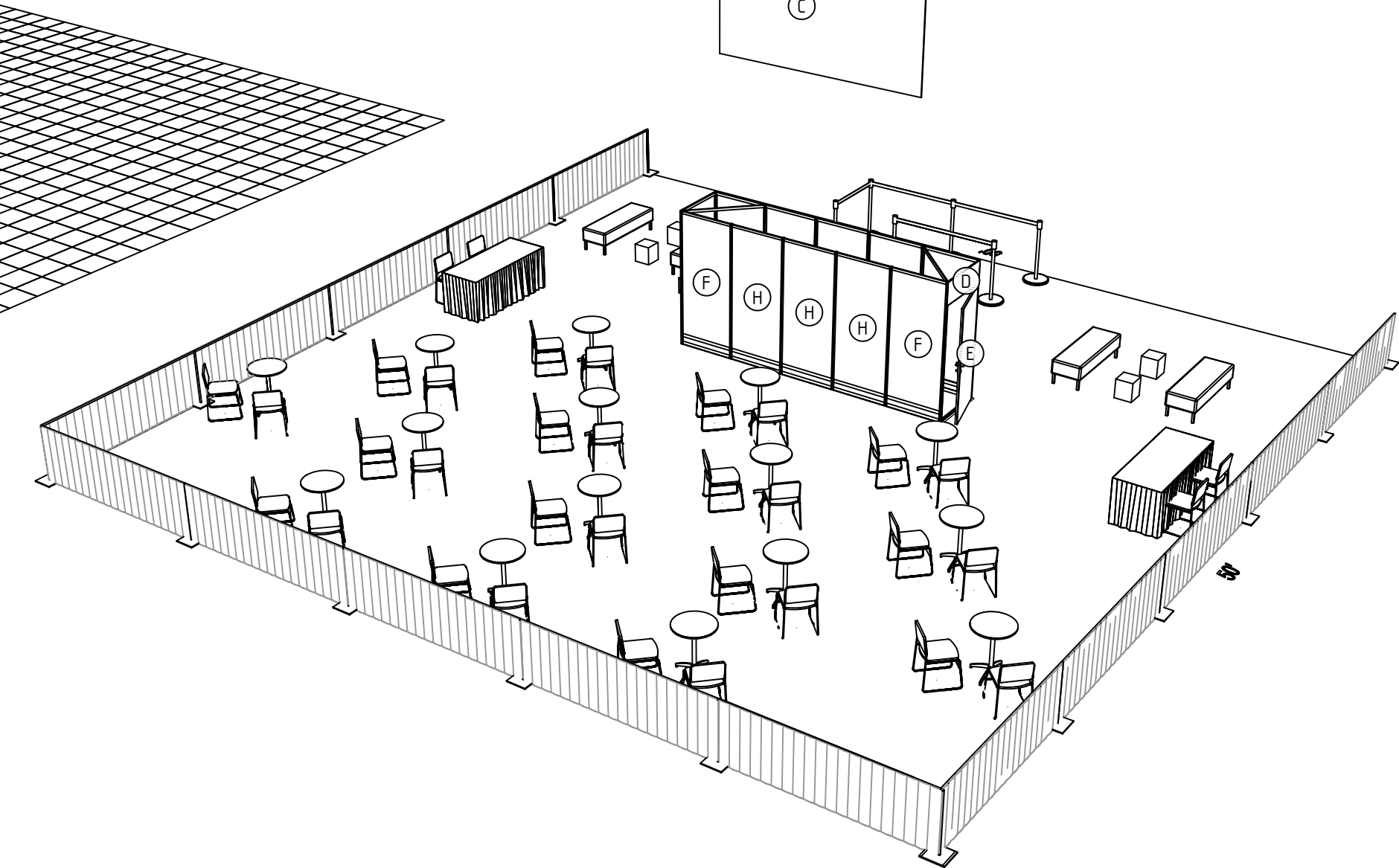
REVISED 7/12/2018

PRODUCING BRANCH New Orleans

FILE NAME P:/Dallas/Branch/SCRD/AA_OUT OF REGION/2019/New Orleans/Endocrine Annual Meeting (443026)/Exposition/AutoCad/Career Center Lounge Area/ENDO19 Career Ctr Lounge L4831585 DESBW.dwg

The text, graphics, designs, logos, data compilations and information ("Content") contained in this Proposal are owned or controlled by Freeman and are protected by United States and international copyright and trade secret laws. Modification or reproduction of the Content for any purpose is strictly prohibited.

Perspective



PERSPECTIVE

Please note that the structure and/or panel size is subject to change during final production detail.

FREEMAN

PROJECT Career Center Lounge
BOOTH # 835

SHOW NAME Endocrine Soc
SHOW DATE 3/23/2019 through 3/26/2019
SHOW LOCATION Morial Convention Center

SALES CONTACT Julie Wheelless
JOB NUMBER 443026
LINE ITEM NUMBER 4831585

CREATED BY Kristina Kim

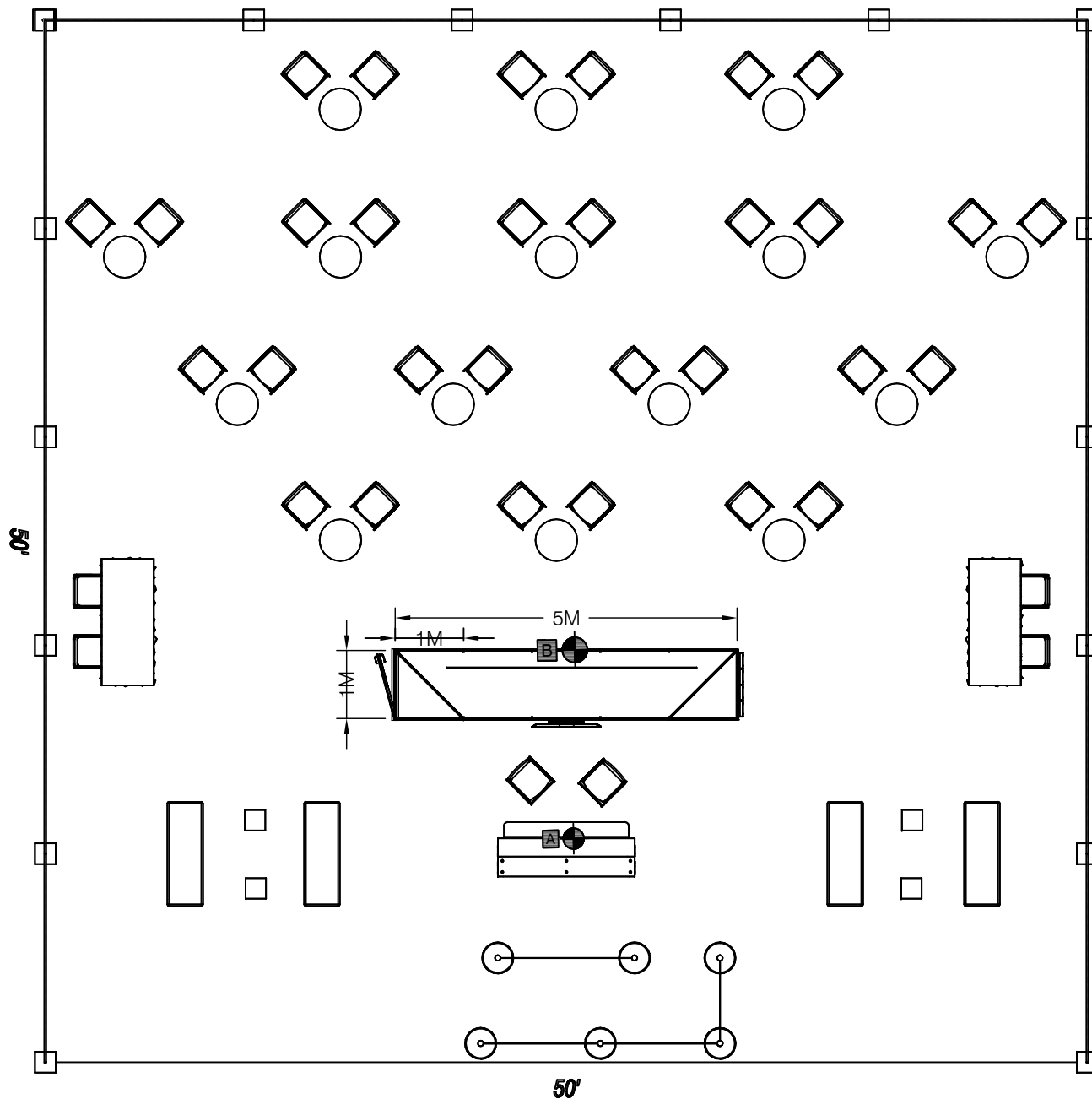
CREATION DATE 7/12/2018
REVISED 7/12/2018

PRODUCING BRANCH New Orleans

FILE NAME P:/Dallas/Branch/SCRD/AA_OUT OF REGION/2019/New Orleans/Endocrine Annual Meeting (443026)/Exposition/AutoCad/Career Center Lounge Area/ENDO19 Career Ctr Lounge L4831585 DESBW.dwg

The text, graphics, designs, logos, data compilations and information ("Content") contained in this Proposal are owned or controlled by Freeman and are protected by United States and international copyright and trade secret laws. Modification or reproduction of the Content for any purpose is strictly prohibited.

Perspective



Please note that the structure and/or panel size is subject to change during final production detail.

FREEMAN

PROJECT Career Center Lounge
BOOTH # 835

SHOW NAME Endocrine Soc
SHOW DATE 3/23/2019 through 3/26/2019
SHOW LOCATION Morial Convention Center

SALES CONTACT Julie Wheelless
JOB NUMBER 443026
LINE ITEM NUMBER 4831585

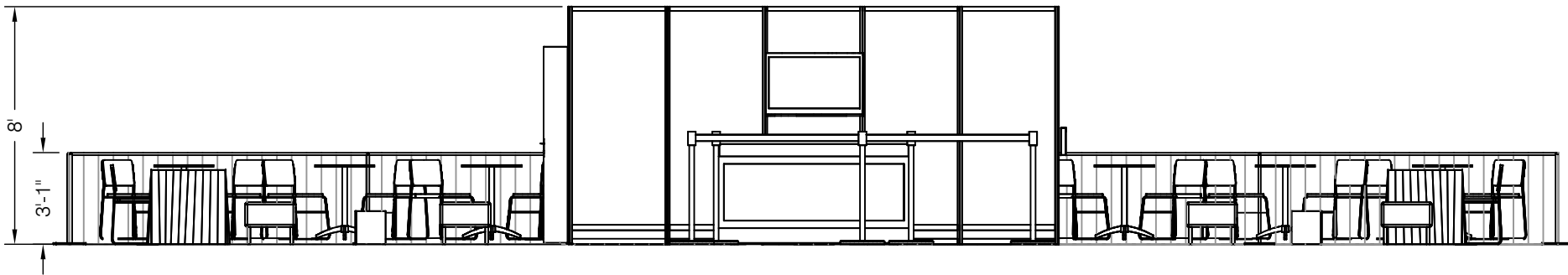
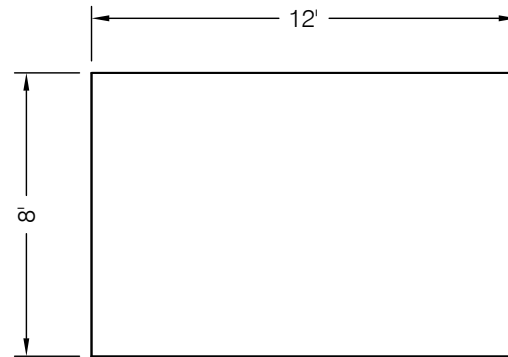
CREATED BY Kristina Kim

CREATION DATE 7/12/2018

REVISED 7/12/2018

PRODUCING BRANCH New Orleans

FILE NAME P:\Dallas\Branch\SCRD\AA_OUT OF REGION\2019\New Orleans\Endocrine Annual Meeting (443026)\Exposition\AutoCad\Career Center Lounge Area\ENDO19 Career Ctr Lounge L4831585 DESBW.dwg



ELEVATION

Please note that the structure and/or panel size is subject to change during final production detail.

FREEMAN

PROJECT Career Center Lounge
BOOTH # 835

SHOW NAME Endocrine Soc
SHOW DATE 3/23/2019 through 3/26/2019
SHOW LOCATION Morial Convention Center

SALES CONTACT Julie Wheelless
JOB NUMBER 443026
LINE ITEM NUMBER 4831585

CREATED BY Kristina Kim

CREATION DATE 7/12/2018

REVISED 7/12/2018

PRODUCING BRANCH New Orleans

FILE NAME P:/Dallas/Branch/SCRD/AA_OUT OF REGION/2019/New Orleans/Endocrine Annual Meeting (443026)/Exposition/AutoCad/Career Center Lounge Area/ENDO19 Career Ctr Lounge L4831585 DESBW.dwg

Career Center Lounge

I.D.	Qty	Type	Size	Description	Material	Color
	8	P50	96"	8'-0"	Aluminum	Silver
	2	P31	96"	8'-0"	Aluminum	Silver
	11	H45	37-9/16"	1M	Aluminum	Silver
	2	H45	53-7/8"	1MD	Aluminum	Silver
	11	H200	37-9/16"	1M	Aluminum	Silver
	1	H200 Plasma	37-9/16"	1M	Aluminum	Silver
B	1	Door	1M	1M Standard MIS Door	PVC 3MM	White
C	1	Banner	144" x 96"	Hanging Signs SS	PVC	Graphic
	15	Drape	120" x 36"	12' x 3' Drape Panel	Banjo	TBD
	18	Drape	36"	3' Drape Post	Steel	Silver
	1	Drape	1"	Horizontal Drape Bar	Steel	Silver
	15	Drape	120"	Horizontal Drape Bar	Steel	Silver
	4	Misc Part	9" x 12"	Plexi Literature Pocket	Plexi	Clear
	1	Electronics	39-1/2" x 1-3/4" x 24-3/4"	42" LCD Monitor w/ Wall Bracket	Standard	Black
	1	Accessories	12" x 0-3/4" x 12"	Monitor Plywood Mount	Wood	Raw
	2	Drape Tables	72" x 30" x 30"	6x30x30 Drape Table	Standard	Standard
	7	Exhibit Furniture	42"	Chrome Stanchion w_8' Retractable Belt	Metal	Chrome
	4	Ottomans	60" x 20" x 18"	Bench Ottoman, White Vinyl	Vinyl	White
D	1	Overlay Graphic Panel	40-3/16" x 15-7/8"	Door Header Overlay	PVC 3MM	Graphic
E	1	Overlay Graphic Panel	37-1/8" x 79-1/4"	Door Overlay Panel	PVC 3MM	Graphic
F	4	Overlay Graphic Panel	39-7/8" x 96"	P30 Corner L/ 1M/ P50 CENTER	PVC 3MM	Graphic
G	1	Overlay Graphic Panel	40-3/16" x 96"	P30 Corner S/ 1M/ P30 Corner S	PVC 6MM	Graphic
H	6	Overlay Graphic Panel	39-3/8" x 96"	P50 Center/ 1M/ P50 Center	PVC 3MM	Graphic
	34	Seating	21" x 23" x 32"	Black Diamond Side Chair	Fabric	Black
	2	Seating	22" x 18" x 46"	Black Diamond Stool	Fabric	Gray
	1	SmartCounter Counter	78-3/4" x 31" x 42"	Base Counter Counter	Prebuilt	R255 G255 B255
	1	SmartCounter Counter Top	78-3/4" x 11-1/2"	Std. Counter Top	1/4" Acrylic	Clear
A	1	SmartCounter Graphic	72-11/16" x 23-3/16"	Inset Panel	3mm PVC	Graphic
	15	Tables	24" x 30"	Soho Black-Top Cafe - 24"	Laminate	Black

PARTS LIST

Please note that the structure and/or panel size is subject to change during final production detail.

FREEMAN

PROJECT Career Center Lounge
BOOTH # 835

SHOW NAME Endocrine Soc
SHOW DATE 3/23/2019 through 3/26/2019
SHOW LOCATION Morial Convention Center

SALES CONTACT Julie Wheelless
JOB NUMBER 443026
LINE ITEM NUMBER 4831585

CREATED BY Kristina Kim

CREATION DATE 7/12/2018

REVISED 7/12/2018

PRODUCING BRANCH New Orleans

FILE NAME P:\Dallas\Branch\SCRD\AA_OUT OF REGION\2019\New Orleans\Endocrine Annual Meeting (443026)\Exposition\AutoCad\Career Center Lounge Area\ENDO19 Career Ctr Lounge L4831585 DESBW.dwg

The text, graphics, designs, logos, data compilations and information ("Content") contained in this Proposal are owned or controlled by Freeman and are protected by United States and international copyright and trade secret laws. Modification or reproduction of the Content for any purpose is strictly prohibited.

Parts_List