

FREEMAN

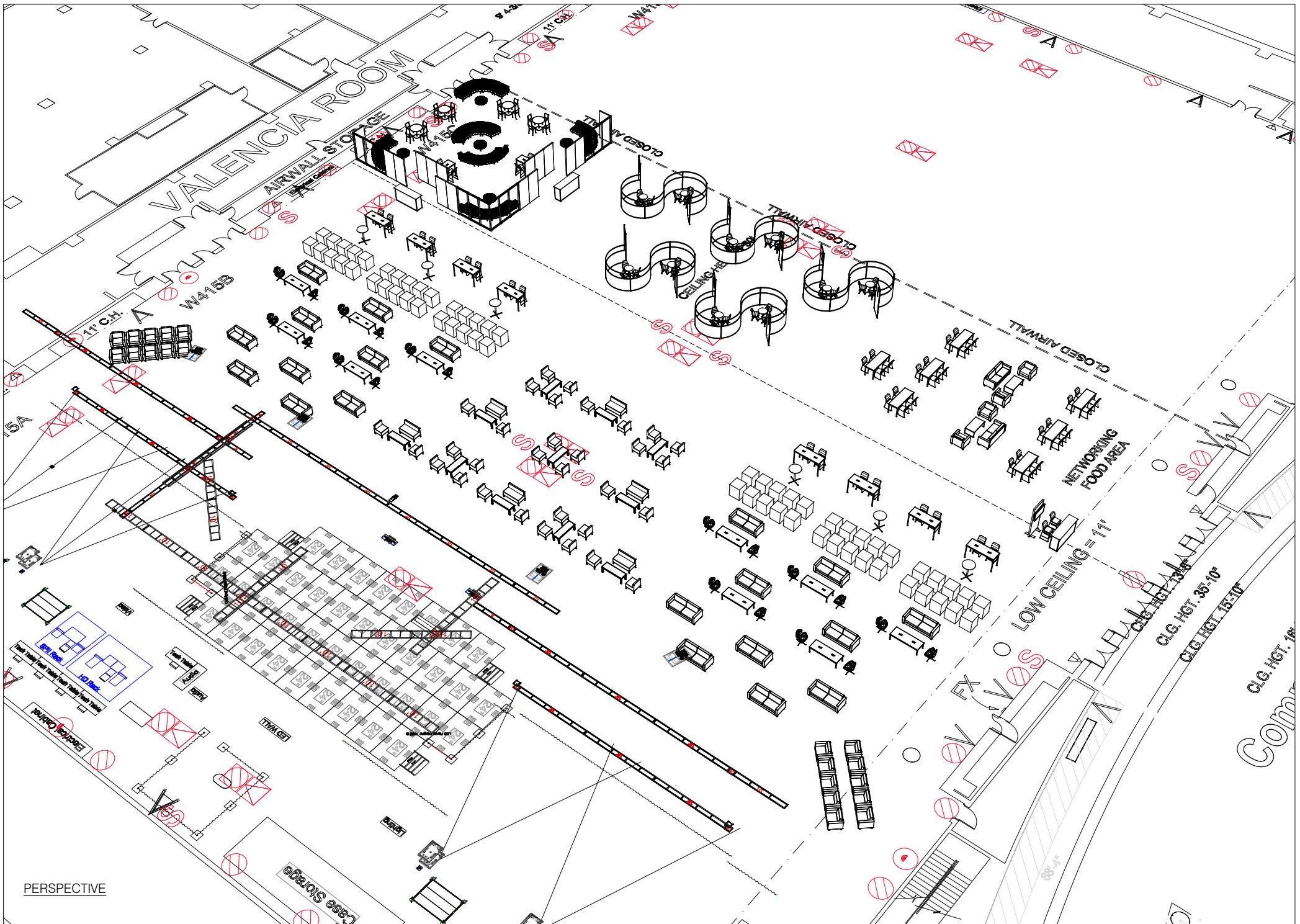
PROJECT Learning Lab
 BOOTH # Level 1 Lower Lobby B

SHOW NAME HIMSS 2019
 SHOW DATE 2/12/2019 through 2/14/2019
 SHOW LOCATION Orange County Convention Center, Orlando, FL

SALES CONTACT Sarah Johnston
 JOB NUMBER 452520
 LINE ITEM NUMBER 4805449

CREATED BY A Mendoza, K Krayer, O Romo
 CREATION DATE 9/18/2018
 REVISED 9/24/2018
 PRODUCING BRANCH Chicago

FILE NAME P:/Chicago/Branch/NCRDC/_Out of Region/2019/HIMSS(452520)/Expo/Learning Lab/CAD/HIMSS19 Learning Lab 4805449 DES.dwg



PERSPECTIVE

FREEMAN

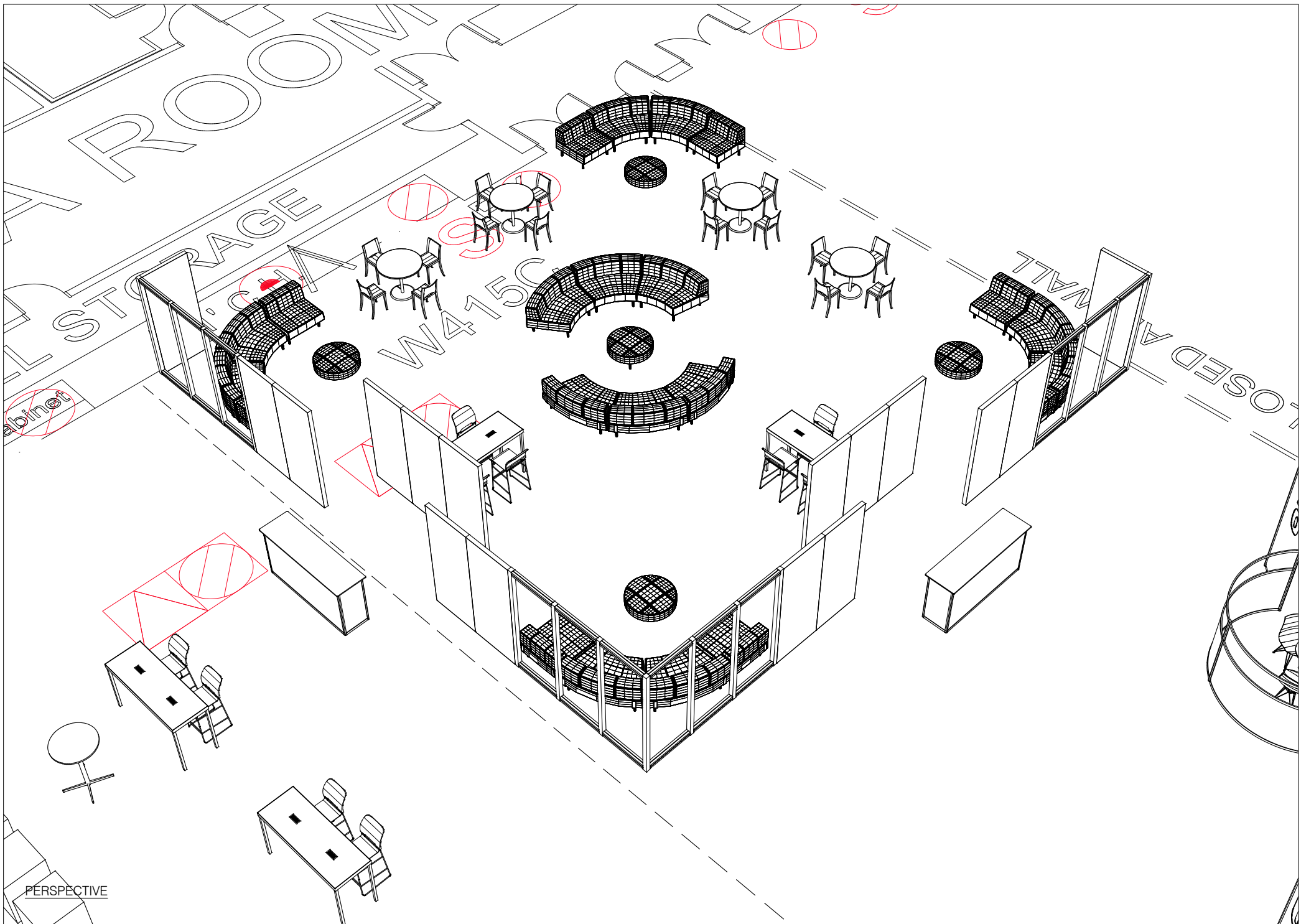
PROJECT Learning Lab
 BOOTH # Level 1 Lower Lobby B

SHOW NAME HIMSS 2019
 SHOW DATE 2/12/2019 through 2/14/2019
 SHOW LOCATION Orange County Convention Center, Orlando, FL

SALES CONTACT Sarah Johnston
 JOB NUMBER 452520
 LINE ITEM NUMBER 4805449

CREATED BY A Mendoza, K Krayer, O Romo
 CREATION DATE 9/18/2018
 REVISED 9/24/2018
 PRODUCING BRANCH Chicago

FILE NAME P:\Chicago\Branch\NCRDC_Out of Region\2019\HIMSS(452520)\Expo/Learning Lab\CAD\HIMSS19 Learning Lab 4805449 DES.dwg



PERSPECTIVE

F R E E M A N

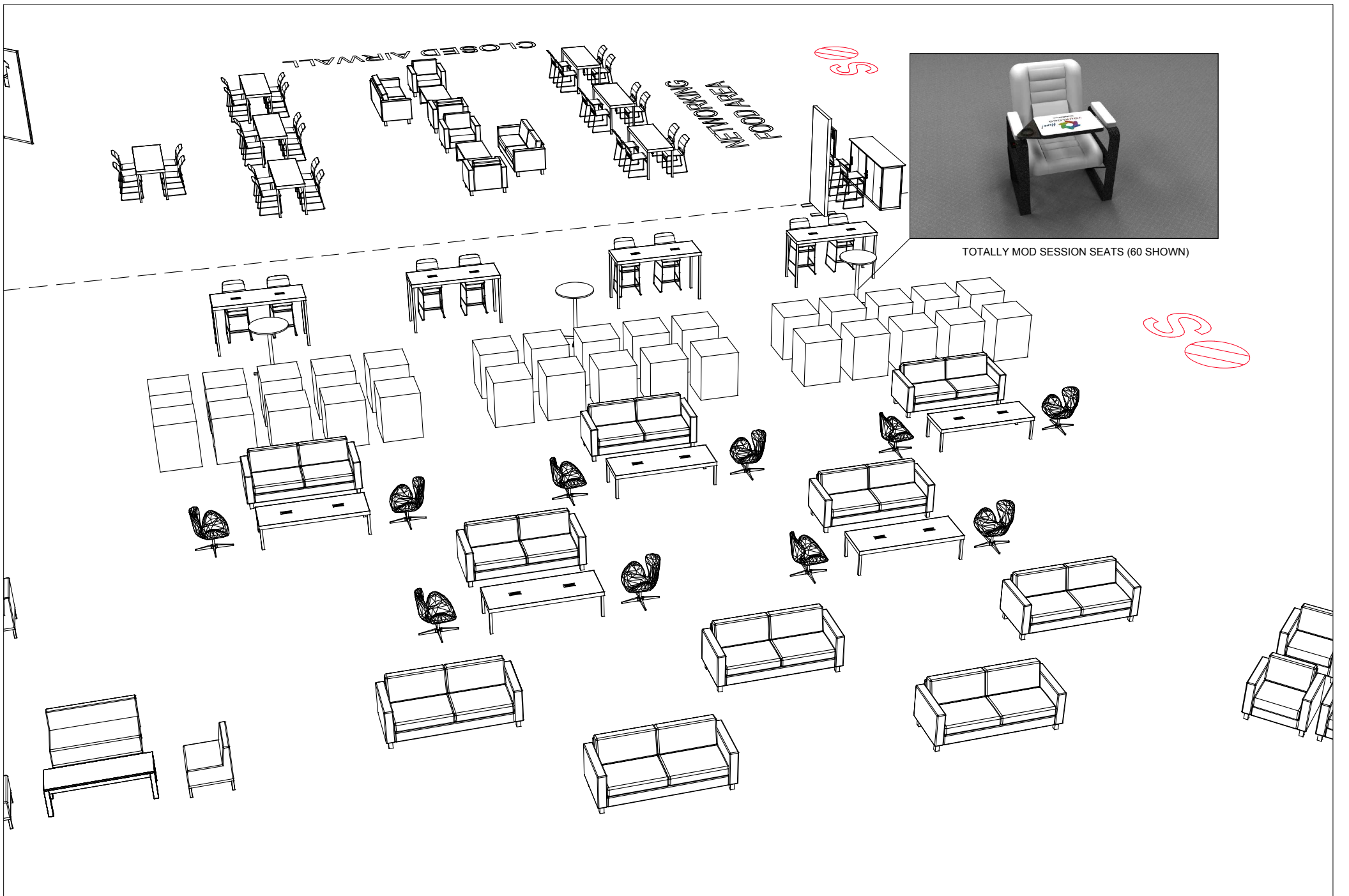
PROJECT Learning Lab
 BOOTH # Level 1 Lower Lobby B

SHOW NAME HIMSS 2019
 SHOW DATE 2/12/2019 through 2/14/2019
 SHOW LOCATION Orange County Convention Center, Orlando, FL

SALES CONTACT Sarah Johnston
 JOB NUMBER 452520
 LINE ITEM NUMBER 4805449

CREATED BY A Mendoza, K Krayer, O Romo
 CREATION DATE 9/18/2018
 REVISED 9/24/2018
 PRODUCING BRANCH Chicago

FILE NAME P:/Chicago/Branch/NCRDC/_Out of Region/2019/HIMSS(452520)/Expo/Learning Lab/CAD/HIMSS19 Learning Lab 4805449 DES.dwg



TOTALLY MOD SESSION SEATS (60 SHOWN)

PERSPECTIVE

F R E E M A N

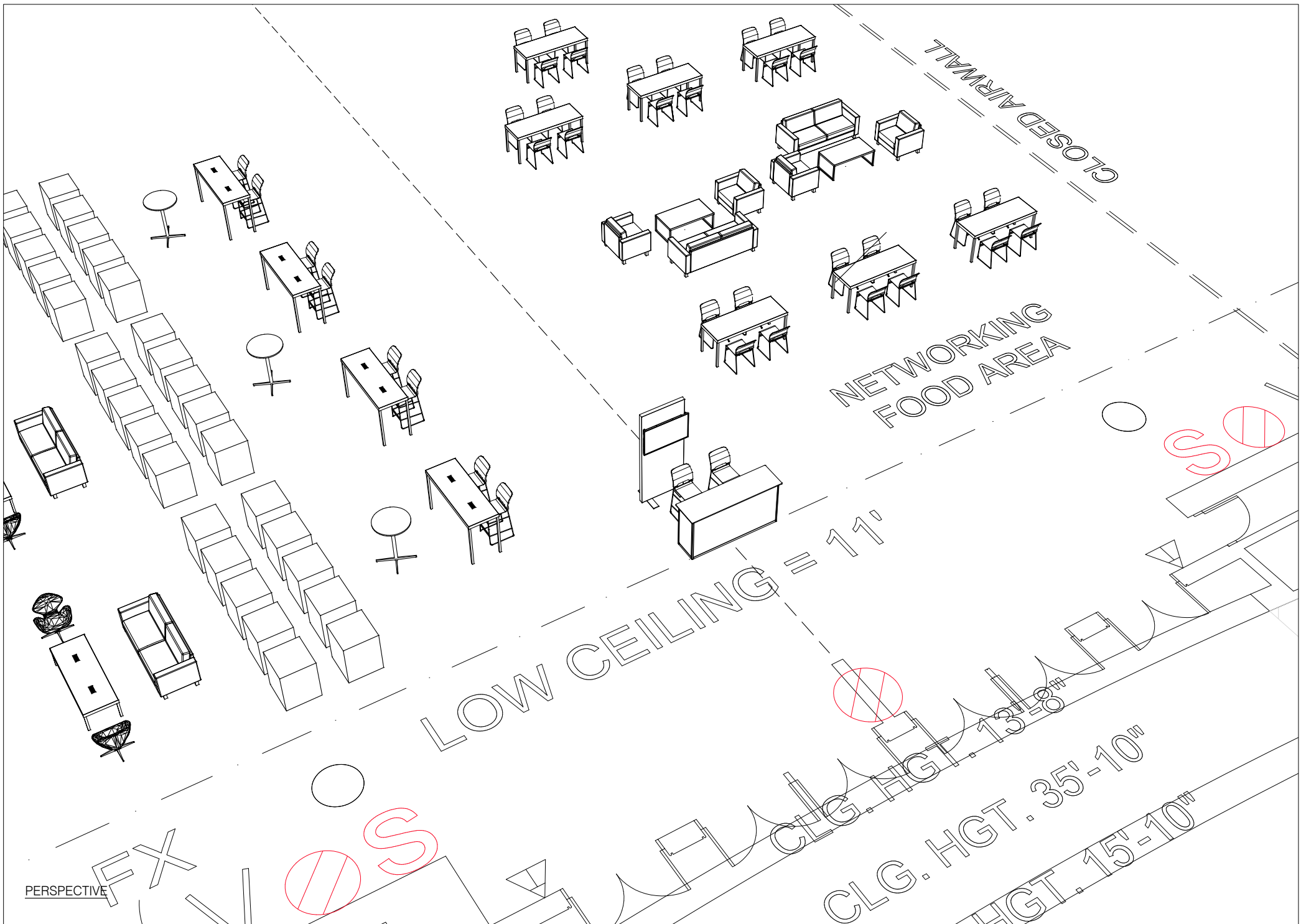
PROJECT Learning Lab
 BOOTH # Level 1 Lower Lobby B

SHOW NAME HIMSS 2019
 SHOW DATE 2/12/2019 through 2/14/2019
 SHOW LOCATION Orange County Convention Center, Orlando, FL

SALES CONTACT Sarah Johnston
 JOB NUMBER 452520
 LINE ITEM NUMBER 4805449

CREATED BY A Mendoza, K Krayer, O Romo
 CREATION DATE 9/18/2018
 REVISED 9/24/2018
 PRODUCING BRANCH Chicago

FILE NAME P:/Chicago/Branch/NCRDC/_Out of Region/2019/HIMSS(452520)/Expo/Learning Lab/CAD/HIMSS19 Learning Lab 4805449 DES.dwg



PERSPECTIVE

FREEMAN

PROJECT Learning Lab
 BOOTH # Level 1 Lower Lobby B

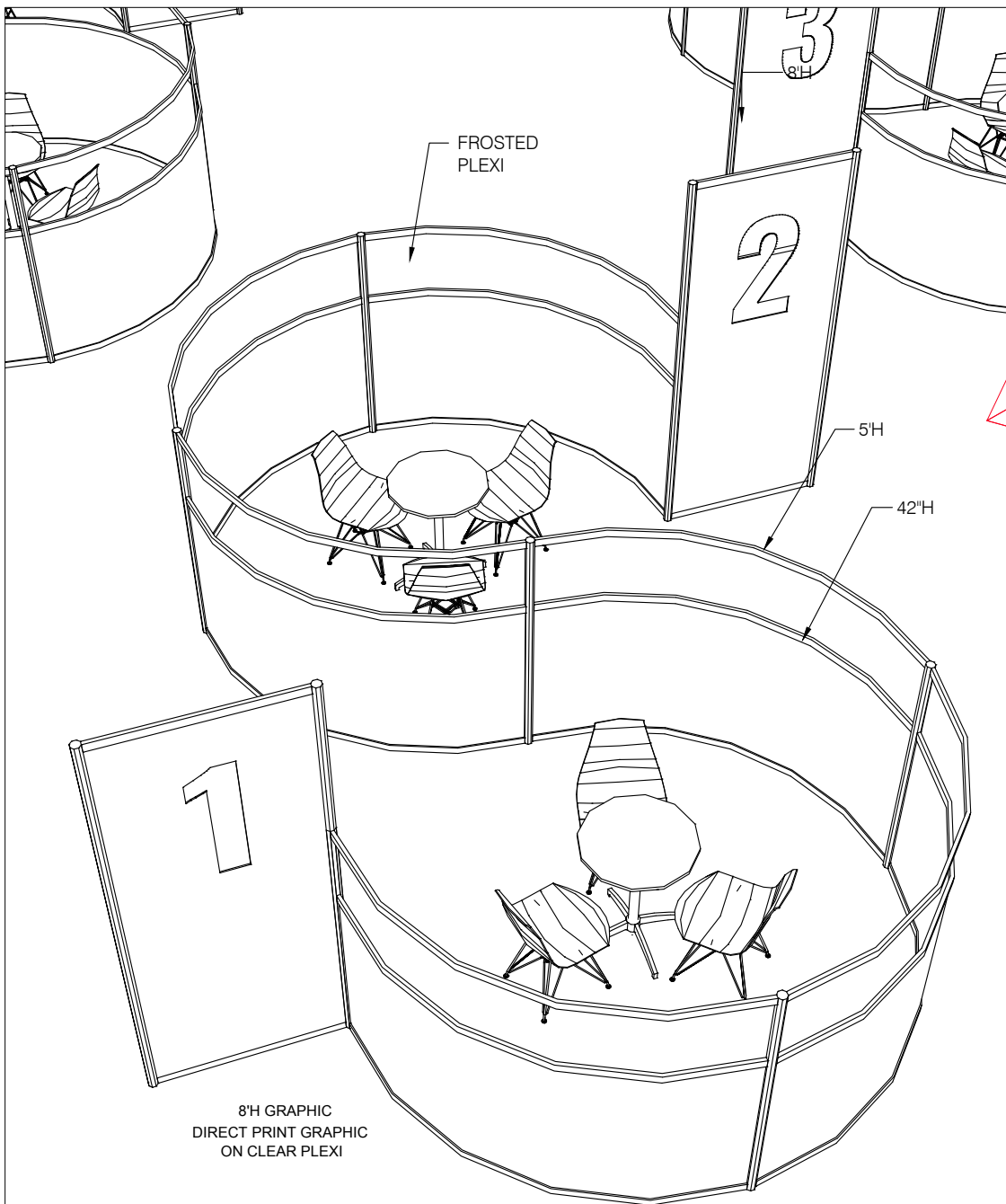
SHOW NAME HIMSS 2019
 SHOW DATE 2/12/2019 through 2/14/2019
 SHOW LOCATION Orange County Convention Center, Orlando, FL

SALES CONTACT Sarah Johnston
 JOB NUMBER 452520
 LINE ITEM NUMBER 4805449

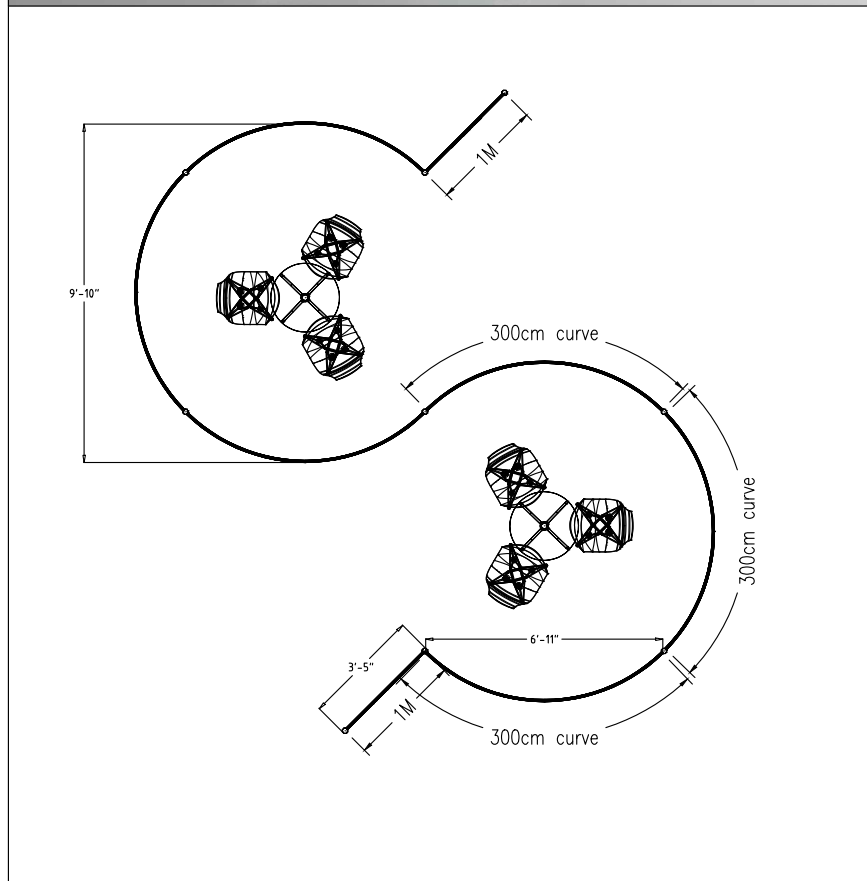
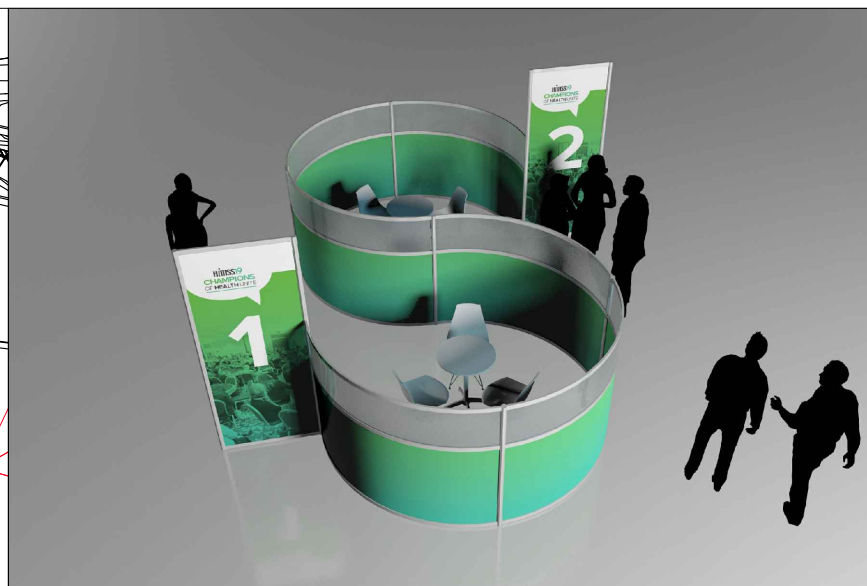
CREATED BY A Mendoza, K Krayer, O Romo
 CREATION DATE 9/18/2018
 REVISED 9/24/2018
 PRODUCING BRANCH Chicago

FILE NAME P:/Chicago/Branch/NCRDC/_Out of Region/2019/HIMSS(452520)/Expo/Learning Lab/CAD/HIMSS19 Learning Lab 4805449 DES.dwg

The text, graphics, designs, logos, data compilations and information ("Content") contained in this Proposal are owned or controlled by Freeman and are protected by United States and international copyright and trade secret laws. Modification or reproduction of the Content for any purpose is strictly prohibited.



PERSPECTIVE



FREEMAN

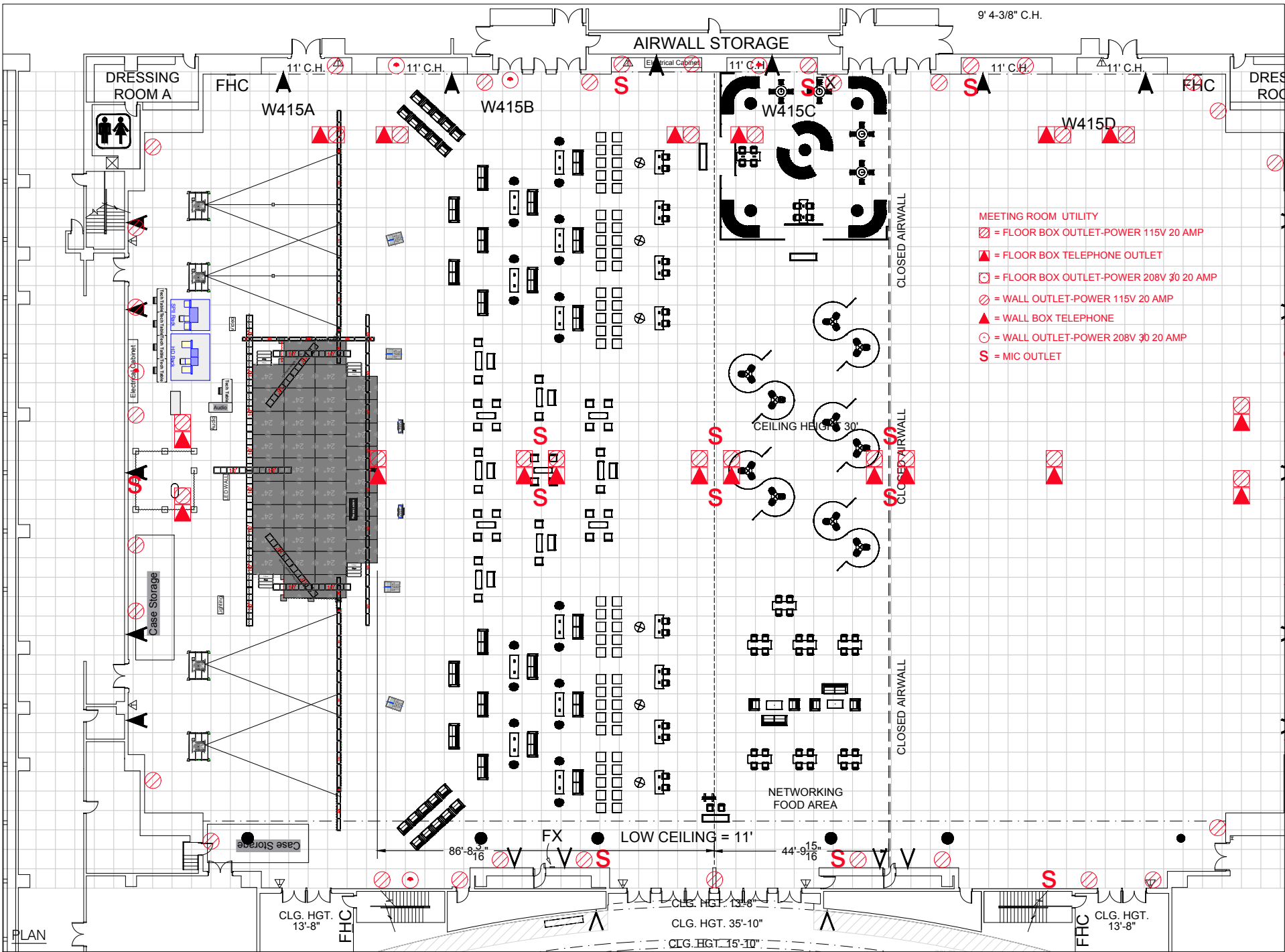
PROJECT Learning Lab
BOOTH # Level 1 Lower Lobby B

SHOW NAME HIMSS 2019
SHOW DATE 2/12/2019 through 2/14/2019
SHOW LOCATION Orange County Convention Center, Orlando, FL

SALES CONTACT Sarah Johnston
JOB NUMBER 452520
LINE ITEM NUMBER 4805449

CREATED BY A Mendoza, K Krayer, O Romo
CREATION DATE 9/18/2018
REVISED 9/24/2018
PRODUCING BRANCH Chicago

FILE NAME P:/Chicago/Branch/NCRDC/_Out of Region/2019/HIMSS(452520)/Expo/Learning Lab/CAD/HIMSS19 Learning Lab 4805449 DES.dwg



Learning Lab

I.D.	Qty	Type	Size	Area (SqFt)	Description	Material	Color
	36	P80	60"		5'-0"	Aluminum	Silver
	24	P80	96"		8'-0"	Aluminum	Silver
	24	H45	37-9/16"		1M	Aluminum	Silver
	108	CH45	91-1/4"		300cm	Aluminum	Silver
	6	Wall Panel	18-3/8" x 39"	5.0	1/2M x 3'-6" Panel	PVC 3MM	White
	3	Wall Panel	77-7/16" x 39"	21.0	2M x 3'-6" Panel	PVC 3MM	White
	36	Wall Panel	91-3/4" x 39"	24.8	300cm x 3'-6" (CH45/CH45)	PVC 3MM	White
	36	Acrylic Panel	91-3/4" x 16-3/4"	10.7	300cm x 1'-7-3/4" (CH45/CH45)	Plex 1/8	Clear
	12	Acrylic Panel	36-3/8" x 87-3/16"	22.0	1 panels x 7'-9" (PH80 - PH80)	Plexi	Clear
	12	Acrylic Panel	38-1/8" x 93"	24.6	1M x 8'-0" (H45/H45)	Plex 1/8	Clear
	3	Counter Top	2Mx1/2M	0	Overlay Rectangle	Wood	White
	3	Assembly	2M x 1/2M x 42"		42" (45/45) - 2M x 1/2M	Standard	TBD
	1	Electronics	42-5/16" x 2" x 24-11/16"	0	46" LCD Monitor w/ Wall Bracket	Standard	Black
	10	Furniture	55" x 13-1/2" x 17-1/2"		CORT Rustique Bench	Wood	Wood
	12	Furniture Essentials	30" x 24"		Black-Top Cafe - 24"	Wood	Black
	24	PH80	3-5/32" x 3-5/32" x 35-7/8"		35-7/8" Horizontal Bar	Aluminum	Silver
	15	PV80	3-5/32" x 3-5/32" x 93-1/2"		93-1/2"	Aluminum	Silver
	2	SP Foot	23-5/8" x 4-15/16"		24" Foot	Aluminum	Silver
	17	SP Frame	39" x 93"		8' Full SmartPanel Frame	Aluminum	Silver
	34	SP Panel	38-5/8" x 92-5/8"	24.84	Panel From Edge to Edge	PVC	White
	32	Seating	24" x 24" x 28"	0	Heathrow Chair, Black Vinyl	Leather	White
	6	Seating	48" x 24" x 28"		Heathrow Sofa, Black Vinyl	Leather	Black
	28	Seating	18" x 17.75" x 33"		Limerick Chair	Plastic	Gray
	26	Seating	18" x 17.75" x 44"		Limerick Stool	Plastic	Gray
	16	Seating	15.38" x 15.5" x 30.5"	0	Razor Chair, White	Plastic	White
	24	Seating	37" x 31" x 33"		Roma Chair, White	Vinyl	White
	22	Seating	78" x 31" x 33"		Roma Sofa, White	Vinyl	White
	20	Seating	28" x 25" x 18"		Swanson Swivel Chair, White Vinyl	Vinyl	White
	36	Seating	18.5" x 22" x 32"H	0	Zenith Chair, White, Chrome	Plastic	White
	6	Tables	30" x 42"		30" Round Bar Table w/ Standard Black Base, Liquid Steel Blu	Laminate	Blue Steel
	4	Tables	36" x 29"	0	36" Round Cafe Table w/ Hydraulic Base, White Laminate Top	Laminate	White
	10	Tables	72" x 26" x 42"		G30 Bar Table, Powered White Top	Laminate	White
	7	Tables	72" x 26" x 30"		G30 Cafe Table, Solid White Top	Laminate	White
	10	Tables	72" x 26" x 18"		G30 Cocktail Table, Powered White Top	Laminate	White
	2	Tables	48" x 26" x 18"		Sydney Cocktail Table, White	Laminate	White

PARTS LIST

F R E E M A N

PROJECT Learning Lab
BOOTH # Level 1 Lower Lobby B

SHOW NAME HIMSS 2019
SHOW DATE 2/12/2019 through 2/14/2019
SHOW LOCATION Orange County Convention Center, Orlando, FL

SALES CONTACT Sarah Johnston
JOB NUMBER 452520
LINE ITEM NUMBER 4805449

CREATED BY A Mendoza, K Krayer, O Romo
CREATION DATE 9/18/2018
REVISED 9/24/2018
PRODUCING BRANCH Chicago

FILE NAME P:/Chicago/Branch/NCRDC/_Out of Region/2019/HIMSS(452520)/Expo/Learning Lab/CAD/HIMSS19 Learning Lab 4805449 DES.dwg

The text, graphics, designs, logos, data compilations and information ("Content") contained in this Proposal are owned or controlled by Freeman and are protected by United States and international copyright and trade secret laws. Modification or reproduction of the Content for any purpose is strictly prohibited.