

FREEMAN®

exhibit collection 2020



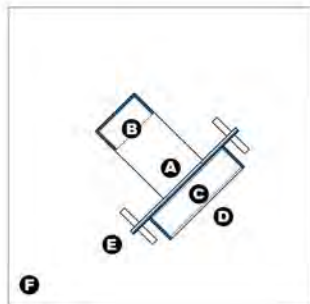
Price: \$15,095.00 plus production fees and applicable sales tax. Available upgrades are listed below.
 (Estimated production fee for CSM = \$500. Orlando, FL Sales tax = 6.5%)

FREEMAN*

FREEMAN EXHIBIT COLLECTION



* Furniture, accessories and computer equipment not included in package



View 1: Floor Plan

■ Printed graphic panel



View 2: Front Side

■ Printed graphic panel ■ Floor / Carpet



View 3: Back Side

■ Printed graphic panel ■ Floor / Carpet

extend 4

20x20
ISLAND BOOTH

Description:

The open, unobstructed space offers you an opportunity to welcome and interact with visitors. Digital displays offer additional vehicles to express your message and products

Exhibit Features:

- Ⓐ 16'h Modular double sided structure with mural fabric graphic
- Ⓑ (1) 2'w x 42"h x 76"d built in desk with interior storage and graphic panels
- Ⓒ (2) 46" mounted monitors
- Ⓓ (1) 79"w x 42"h x 20"d cabinet with interior storage and graphic panels
- Ⓔ (6) arm spot lights to highlight graphic display
- Ⓕ Choice of color of classic carpet and 1/2" padding

Included Services:

- Structure rental and installation / dismantle
- Graphic printing/installation (fabric graphics are reusable)
- Electrical service for arm lights and monitors
- Nightly vacuuming
- Material handling and local delivery of exhibit structure

Available Upgrades:

- Furniture/Accessories: various selections such as the Zenith barstools shown
- Flooring options: upgraded carpet, extra padding, vinyl/faux wood, flooring logos
- Electronics/AV: laptops, iPads, sound system, etc.
- Additional electrical as needed
- Hanging signs

Price: \$24,795.00 plus production fees and applicable sales tax. Available upgrades are listed below.
 (Estimated production fee for CSM = \$500. Orlando, FL Sales tax = 6.5%)

FREEMAN*

FREEMAN EXHIBIT COLLECTION

explore 1

**20x20
ISLAND BOOTH**



* Furniture, accessories and laptop not included in package

Description:

This theater-style space with a large digital display makes your brand the star of the show. Excite attendees with dramatic visuals that bring your story to life

Exhibit Features:

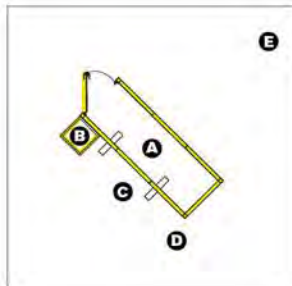
- A** 16'h Modular double sided structure with large mural fabric graphic and 10.5'w x 3.8'd storage closet / locking door
- B** (1) 20"w x 42"h x 20"d pedestal with interior storage, locking door and graphic panels
- C** (1) 70" mounted monitor
- D** (8) arm spot lights to highlight graphic display
- E** Choice of color of classic carpet and 1/2" padding

Included Services:

- Structure rental and installation / dismantle
- Graphic printing/installation (fabric graphics are reusable)
- Electrical service for arm lights and monitor
- Nightly vacuuming
- Material handling and local delivery of exhibit structure

Available Upgrades:

- Furniture/Accessories: various selections are available
- Flooring options: upgraded carpet, extra padding, vinyl/faux wood, flooring logos
- Electronics/AV: laptops, iPads, sound system, etc
- Additional electrical as needed
- Hanging signs



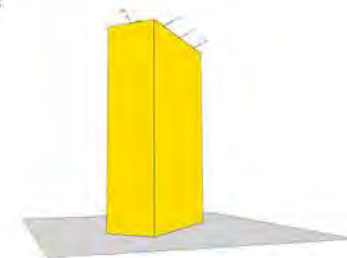
View 1: Floor Plan

■ Printed graphic panel



View 2: Front Side

■ Printed graphic panel ■ Floor / Carpet



View 3: Back Side

■ Printed graphic panel ■ Floor / Carpet

Price: \$25,395.00 plus production fees and applicable sales tax. Available upgrades are listed below.
 (Estimated production fee for CSM = \$500. Orlando, FL Sales tax = 6.5%)

FREEMAN*

FREEMAN EXHIBIT COLLECTION



express 2 | 20x20 ISLAND BOOTH

Description:

If you're looking to bring in a larger group for a digital demonstration, this exhibit is a great fit. The open concept is inviting without distractions and offers space to showcase your product

Exhibit Features:

- A** 16'h Modular tower structure with large mural fabric graphic and 10'w x 10'd storage closet with locking door
- B** (8) 32" mounted monitors
- C** (8) 40"w x 42"h x 20"d storage cabinet with interior storage and graphic panels
- D** (12) arm spot lights to highlight graphic display
- E** Choice of color of classic carpet and 1/2" padding

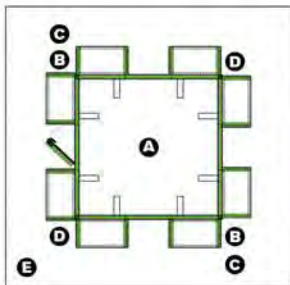
Included Services:

- Structure rental and installation / dismantle
- Graphic printing/installation (fabric graphics are reusable)
- Electrical service for arm lights and monitors
- Nightly vacuuming
- Material handling and local delivery of exhibit structure

Available Upgrades:

- Furniture/Accessories: various selections are available
- Flooring options: upgraded carpet, extra padding, vinyl/faux wood, flooring logos
- Electronics/AV: laptops, iPads, sound system, etc.
- Additional electrical as needed
- Hanging signs

* Furniture, accessories and laptop not included in package



View 1: Floor Plan

■ Printed graphic panel



View 2: Front Side

■ Printed graphic panel ■ Floor / Carpet



View 3: Back Side

■ Printed graphic panel ■ Floor / Carpet

Price: \$38,995.00 plus production fees and applicable sales tax. Available upgrades are listed below.

FREEMAN*

FREEMAN EXHIBIT COLLECTION

express 4 20x20 ISLAND BOOTH

Description:

If you need space for both brand exposure and semi-private meeting spaces, this exhibit offers the best of both worlds in a sleek, relaxing setting

Exhibit Features:

- A** 8'h Modular private meeting room structure - 19'w x 13'd with white pvc walls and (1) 70" mounted monitor, and single sided mural fabric graphics on all exterior sides
- B** (1) 60" mounted monitor
- C** (2) 5'w x 42"h x 20"d reception counter with interior storage and graphic panels
- D** (10) arm spot lights to highlight graphic display and illuminate inside meeting area
- E** Choice of color of classic carpet and 1/2" padding

Included Services:

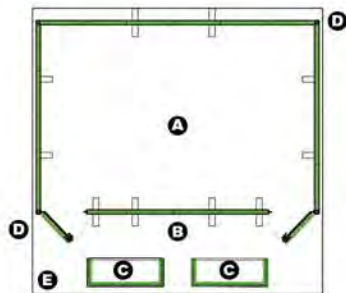
- Structure rental and installation / dismantle
- Graphic printing/installation (fabric graphics are reusable)
- Electrical service for arm lights and monitor
- Nightly vacuuming
- Material handling and local delivery of exhibit structure

Available Upgrades:

- Furniture/Accessories: various selections are available, including meeting room furniture such as G30 Powered Tables and Malba Chairs
- Flooring options: upgraded carpet, extra padding, vinyl/faux wood, flooring logos. Hanging signs are also available
- Graphics: printed graphics on conference room walls
- Electronics/AV: laptops, iPads, sound system, etc.
- Additional electrical as needed
- Hanging signs



* Furniture, accessories and laptops not included in package



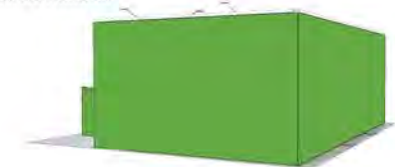
View 1: Floor Plan

■ Printed graphic panel



View 2: Front Side

■ Printed graphic panel ■ Floor / Carpet



View 3: Back Side

■ Printed graphic panel ■ Floor / Carpet